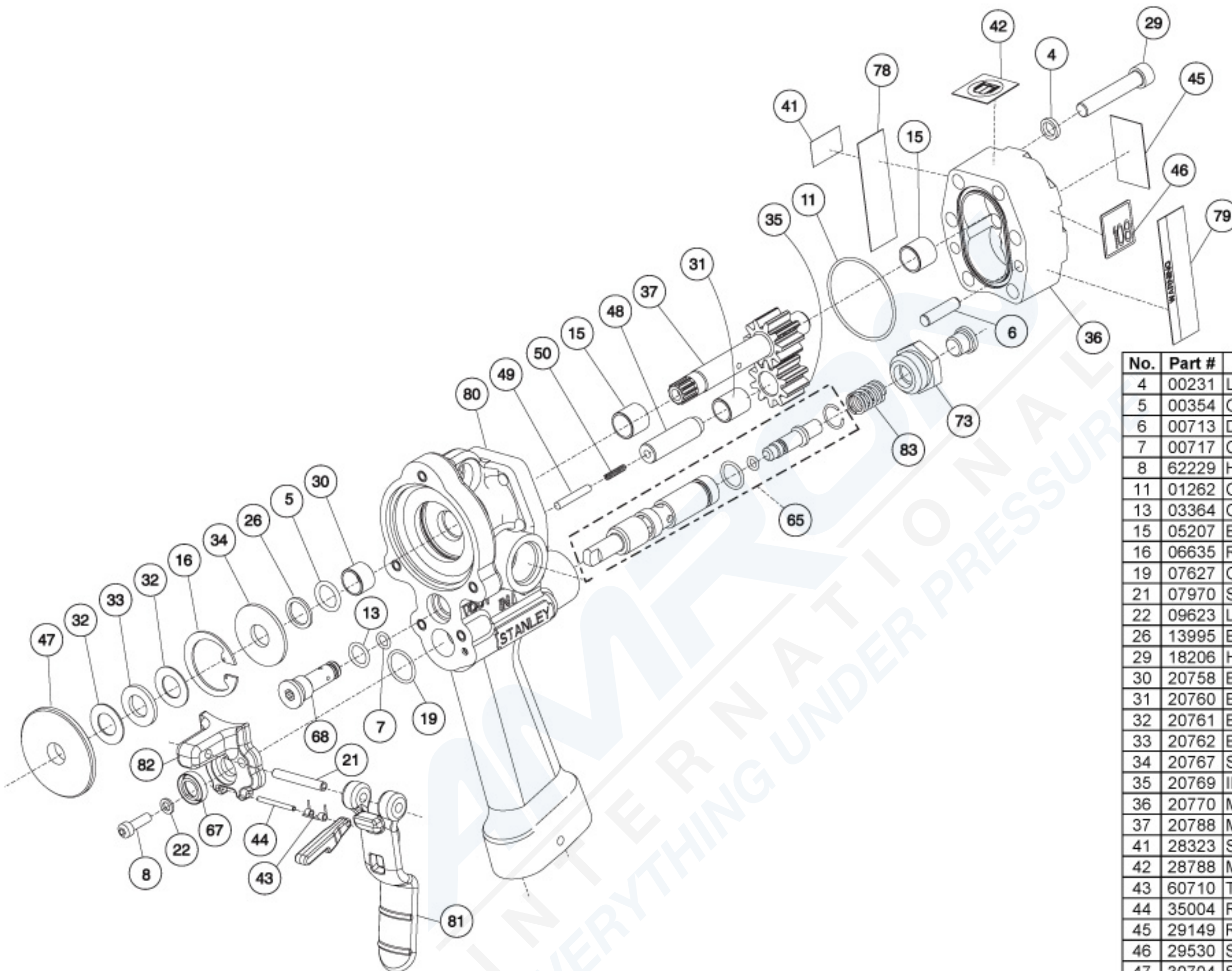
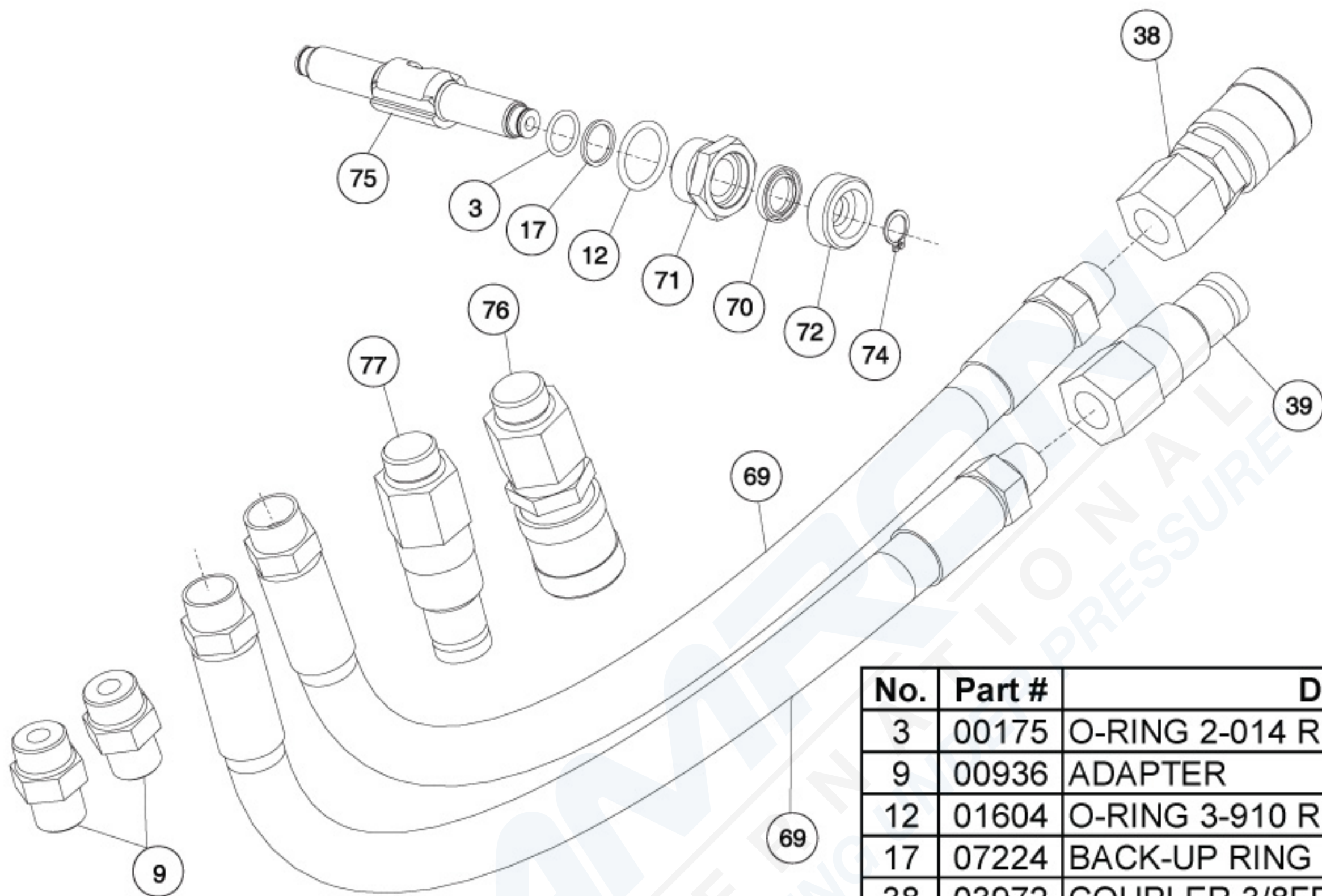


No.	Part #	Description
1	00012	O-RING 2-019 R16 70D BUNA
8	62229	HSHCS 10-24UNCx5/8 GR8 ZINC PL
10	01205	O-RING 2-035 R17 90D BUNA
14	05117	ADAPTOR 7/16HEX x 1/2SQDR
20	07724	LOCKNUT 10-24 STNLS
22	09623	LOCKWASHER-#10 STNLS
23	09687	HSHCS 10-24UNCx2 SST
24	11207	CIRCUIT TYPE D STICKER
25	11354	STICKER-OC/CC
27	15966	STEEL BALL 9/32 DIA
51	60806	NAME TAG ID07
51	32284	MODIFIED IMPACT MECHANISM
52	06757	HAMMER PIN
53	31896	HAMMER FRAME
54	31897	HAMMER
55	32150	ANVIL 1/2"SQ
56	31899	SPRING
57	31900	THRUST RING
58	31901	THRUST RING LOCK
59	31902	RETAINING SLEEVE
60	32153	HAMMER CASE BUSHING, U/W
61	31904	HAMMER CASE
62	32029	PILOT RING
63	32151	RETAINER
64	08416	SPRING 5UHD-718



No.	Part #	Description
4	00231	LOCK WASHER
5	00354	O-RING 2-112 R16 70D BUNA
6	00713	DOWEL PIN
7	00717	O-RING 2-010 R16
8	62229	HSHCS 10-24UNCx5/8 GR8 ZINC PL
11	01262	O-RING 2-031 R16 70D BUNA
13	03364	O-RING 3-905 R17 90D BUNA
15	05207	BUSHING-1/2 ID X 1/2 LONG
16	06635	RET RING 1 3/8 INT
19	07627	O-RING 2-016 R24 ASTM 2000
21	07970	SPIROL PIN 3/16x1 3/8 LDP STNS
22	09623	LOCKWASHER#10 STNLS
26	13995	BACK-UP RING, TEFLON 1/2X3/32,
29	18206	HSHCS 5/16-18UNCx1-3/4 SST
30	20758	BUSHING 08DU06
31	20760	BUSHING 07DU10
32	20761	BEARING RACE
33	20762	BEARING
34	20767	SEAL BACK-UP WASHER
35	20769	IDLER GEAR ASSY
36	20770	MOTOR CAP ASSY
37	20788	MAIN SHAFT
41	28323	STICKER "CE" 12MM
42	28788	MANUAL STICKER
43	60710	TRIGGER GUARD
44	35004	RAIL TEMPLATE 129TR NSI SUB-
45	29149	ROTATION DIRECTION STICKER
46	29530	SOUND POWER LEVEL #108
47	30704	SPACER
48	31246	IDLER SHAFT
49	31299	PLUNGER
50	31665	COIL SPRING
65	48986	SPOOL, VALVE ASSY
67	49139	WIPER, SEAL METAL ENCASED
68	56721	RELIEF CARTRIDGE ASSY
73	56758	SPRING CAP
78	58862	WARNING STICKER-GPM
79	58864	WARNING STICKER-ELECTRICAL
80	59049	MAIN HOUSING ASSEMBLY
81	60677	TRIGGER CASTING
82	60678	TRIGGER MOUNT CASTING
83	65480	SPRING



No.	Part #	Description
3	00175	O-RING 2-014 R17 90D BUNA
9	00936	ADAPTER
12	01604	O-RING 3-910 R17 90D BUNA
17	07224	BACK-UP RING TEFLON#AS568-014
38	03972	COUPLER,3/8FEM. 3/8NPT FL.FACE
38	47436	FEMALE COUPLER (AEROQUIP)
39	03973	COUPLER,3/8MALE 3/8NPT FL.FACE
69	56725	HOSE ASSEMBLY PARKER
69	66727	HOSE ASSEMBLY AEROQUIP
70	56747	SEAL WIPER
71	56749	SEAL CAP
72	56757	END CAP
74	56764	RETAINING RING
75	56765	REVERSING SPOOL
76	58856	3/8 FF Body -8 male SAE
77	58857	3/8 FF NOSE -8 male SAE