

2016-2017

STANLEY INFRASTRUCTURE CE PRODUCTS CATALOGUE



www.StanleyHydraulics.com

STANLEY[®]

Infrastructure



GREAT BRAND GREAT TOOLS

Stanley Hydraulic Tools has a proud tradition of being a global leader in the development of a wide range of innovative hydraulic products used in a variety of industries and applications throughout the world. As a proud member of Stanley Black & Decker, a 165 year old company committed to the manufacture and distribution of quality tools for the professional, industrial, and consumer, we at Stanley Hydraulic Tools are dedicated to providing our customers with innovative customer-driven product designs, world class quality, unmatched product support, and superior value.

In 1984, Stanley Black & Decker purchased HED, Inc., the largest U.S. manufacturer of mounted hydraulic breakers and compactors, and integrated HED's product line, design and manufacturing expertise with the Hydraulic Tools Product Group.

Today, Stanley Hydraulic Tools is the world's largest hand held hydraulic tool manufacturer and world-wide market leader offering over 150 hand held hydraulic tools and over 30 mounted impact tools. Further, we're the only US manufacturer of mounted Hydraulic Breakers.

GLOBAL REPRESENTATION

Stanley Hydraulic Tools produces an extensive line of products for use in construction, demolition, scrap processing, recycling, utilities, municipalities, railroads, industry, landscaping, underwater construction, and specialty trades in two North American manufacturing facilities. Additionally, Stanley Hydraulic Tools has sales offices and distributors throughout North America, Central America, South America, Europe, Asia, Australia, and the Middle East.

OUR GOAL

Stanley Hydraulic Tools is committed to being a "great brand" through continuous innovation, excellence, quality, value and service.

CERTIFICATIONS



CATALOG INDEX

COMPANY OVERVIEW	2	RAILROAD TOOLS	36-45
HAND HELD HYDRAULIC TOOLS	4-22	Rail Profile Grinder	37
Breakers	5-7	Rail Track Jack	38
Chipping Hammer	8	Weld Shear	38
Earth Auger	8	Rail Drills	39-40
Tamper	9	Rail Impact Wrench	41
Drills	10-11	Rail Saw	42
Impact Wrench	12-13	Rail Tie Tamper	43
Cut-Off Saws	14	GTR20 Power Unit	44
Concrete-Cutting Chainsaw	15-16	Robotic Welder	45
Ductile Iron Pipe Saw & Pump	17	HYDRAULIC SYSTEM REQUIREMENTS	46
Pruner	18		
Grinder	18		
Submersible Pumps	19		
Trash Pumps	20		
Power Units	21-22		
UNDERWATER HYDRAULIC TOOLS	23-35		
Underwater Breakers	24-25		
Underwater Chipping Hammer	26		
Underwater Drills	27-29		
Underwater Impact Wrench	30-31		
Underwater Cut-Off Saw	32		
Underwater Chain Saw	33-34		
Underwater Grinder	35		



All Stanley tools, accessories, parts and allied equipment are subject to design improvements, specification and price changes at any time without notice and with no obligation to units already sold. Weights, dimensions and operating specifications listed herein are subject to change without notice. Where specifications are critical to your application, please consult the factory.

HAND HELD HYDRAULIC TOOLS

STANLEY.



HYDRAULICS DELIVER A REAL BREAKTHROUGH

Nothing equals the impact force of hydraulic-powered breakers. With the best power-to-weight ratio, higher blow energy, and a lower noise level than pneumatic breakers, our hydraulic percussion tools are simply the best choice. Our 70-lb. class breakers, for instance, deliver roughly the same impact energy as most 90-lb. pneumatic breakers. Internal components are continually bathed in hydraulic oil, providing long-lasting performance with minimal maintenance requirements. And because the hydraulic system is totally enclosed, there's no tool exhaust or oil atomization often found with gas-powered or pneumatic alternatives.

Compared to other options, hydraulic breakers offer:

- Higher impact than comparably sized alternative platforms
- No tool exhaust
- Quieter operation than pneumatic tools allows for use in sensitive areas
- Hydraulic oil provides continuous lubrication of internal parts for longer service life
- Modular, re-buildable design platform improves serviceability
- Handles system back pressures up to 250 psi / 17 bar
- Feathering ON/OFF valve to control speed and make initial tool placement easy

- Trouble-free diaphragm accumulator for added blow energy

Our hydraulic breakers are used around the world in utility construction, street maintenance, repair of water and gas mains, and general contracting jobs.

A general rule of thumb when sizing the appropriate breaker for your application is to use 10 pounds for each inch of material. A 40-pound breaker, for instance, is a good fit for 4-inch concrete. A 90-lb breaker would be used to break 9-inch concrete.



LIGHT TO MEDIUM DUTY BREAKERS

MODEL BR45 - 40# PLUS CLASS

18 KG / 40 LB

5-15 CM / 2-6 IN.
CONCRETE



The BR45 is light to medium duty breakers for work in the 35 to 55 pound class around the globe.

SPECIFICATIONS

Application: Light concrete or asphalt breaking or scoring, small rock breaking, rod driving, tamping.

Tool Bit Size: Varies. (See page 7.)

Hyd. Flow: 4-6 gpm / 15-22 lpm, 7-9 gpm / 26-34 lpm. (See page 7.)

Weight: 51 lbs / 23 kg to 55 lbs / 25 kg

Length: 25.5 in. / 65 cm to 28.25 in. / 72 cm

Width: 14 in. / 35 cm to 17.5 in. / 44.5 cm

Connection: 3/8 in. flush face quick disconnect couplers

FEATURES

- Convenient, maneuverable size makes this class a favorite for light to medium sized jobs
- Anti-vibration handle
- Hose whips and flush-face quick disconnect couplers

23 KG / 50 LB

5-15 CM / 2-6 IN.
CONCRETE

The BR50 is a medium duty breaker for work in the 35 - 55 pound class.

MEDIUM DUTY BREAKERS

INTERNATIONAL 50# CLASS

SPECIFICATIONS

Application: Concrete or asphalt breaking or scoring, small rock breaking, rod driving.

Tool Bit Size: 1-1/4 x 6-1/4 in. / 32 x 152 mm

Hyd. Flow: 7-9 gpm / 26-34 lpm or 4-6 gpm / 15-22 lpm

Weight: 56 lbs / 25 kg

Length: 29 in. / 73 cm

Width: 17.5 in. / 44 cm

Connection: 3/8 in. flush face quick disconnect couplers

FEATURES

- Anti-Vibration Handle (see order information)
- Strong tie rod design for durability
- Hose whips and flush-face quick disconnect couplers
- Ez-Ride™ foot



MEDIUM DUTY BREAKERS

MODEL BR67 - 70# PLUS CLASS

32 KG / 70 LB

15-20 CM / 6-8 IN.
CONCRETE



BR67

The BR67 is a medium to heavy-duty breaker for work in the 70-90 pound class. It is highly productive in construction, street maintenance, repair of water and gas mains, and general contracting jobs.

SPECIFICATIONS

Application: Concrete or asphalt breaking or scoring; small rock breaking; rod, anchor, & stake driving.

Tool Bit Size: 1-1/4 x 6-1/4 in.

Hyd. Flow: 7-9 gpm / 26-34 lpm

Weight: 75 lbs / 34 kg

Length: 29 in. / 74 cm

Overall Width at Handles: 18 in. / 46 cm

Connection: 3/8 in. flush face quick disconnect couplers

FEATURES

- Our original breaker design
- Delivers excellent overall performance
- Provides good balance of power to weight
- Anti-Vibration handle
- Strong tie rod design for durability
- Hose whips and flush-face quick disconnect couplers
- EZ-Ride™ foot

HEAVY DUTY BREAKERS

MODEL BR87 90# PLUS CLASS

41 KG / 90 LB

20+ CM / 8+ IN.
CONCRETE

The BR87 is a heavy-duty breakers for work in the 90 pound class and heavier. With a longer piston stroke, our 90# class breakers are our hardest hitting hand held breakers.

SPECIFICATIONS

Application: Concrete or asphalt breaking or scoring, small rock breaking, rod, anchor, & stake driving.

Tool Bit Size: 1-1/4 x 6-1/4 in.

Hyd. Flow: 7-9 gpm / 26-34 lpm

Weight: 80 lbs / 36 kg

Length: 27 in. / 68 cm

Width: 16 in. / 40 cm

Connection: 3/8 in. flush face quick disconnect couplers

FEATURES

- Our hardest hitting breaker class, designed for the biggest breaking jobs
- Longer stroke delivers greater impact force
- T-type handle
- EZ-Ride™ foot
- Strong tie rod design for durability
- Hose whips and flush-face quick disconnect couplers



BR87



BR87 Label



BR67

BREAKERS

Model	Part No.	Weight	Length	Width	Flow Range	Working Pressure	Full Relief Setting	Capacity	Misc.
BR45	BR4514801	51 lbs / 23 kg	28.25 in. / 72 cm	17.5 in. / 44.5 cm	7-9 gpm / 26-34 lpm	1500-2000 psi / 105-140 bar	2248 psi / 155 bar	7/8 x 3-1/4 in. / 22 82 mm Hex Parallel	Anti Vibration
	BR4516801	51 lbs / 23 kg	28.25 in. / 72 cm	17.5 in. / 44.5 cm	7-9 gpm / 26-34 lpm	1500-2000 psi / 105-140 bar	2248 psi / 155 bar	1 x 4-1/4 in. / 25 x 108 mm Hex Parallel	Anti Vibration
	BR4556801	51 lbs / 23 kg	25.5 in. / 65 cm	14 in. / 35 cm	4-6 gpm / 15-22 lpm	1300-2000 psi / 90-140 bar	2248 psi / 155 bar	1 x 4-1/4 in. / 25 x 108 mm Hex	Anti Vibration
BR50	BR5017801	55 lbs / 25 kg	28.5 in. / 72.4 cm	14 in. / 35 cm	7-9 gpm / 26-34 lpm	1500-2000 psi / 105-140 barr	2248 psi / 155 bar	1-1/4 x 6-1/4 in. / 32 x 160 mm Hex (Non Standard Bits, No Accessories Supplied)	Anti Vibration
	BR5057801	55 lbs / 25 kg	28.5 in. / 72.4 cm	14 in. / 35 cm	4-6 gpm / 15-24 lpm	1300-2000 psi / 90-140 bar	2248 psi / 155 bar	1-1/4 x 6-1/4 in. / 32 x 160 mm Hex (Non Standard Bits, No Accessories Supplied)	Anti Vibration
BR67	BR6717801A	75 lbs / 34 kg	29 in. / 74 cm	18 in. / 46 cm	7-9 gpm / 26-34 lpm	1500-2000 psi / 105-140 bar	2248 psi / 155 bar	1-1/4 x 6-1/4 in. / 32 x 160 mm Hex (Non Standard Bits, No Accessories Supplied)	Anti Vibration
BR87	BR8717201	80 lbs / 36 kg	27 in. / 68 cm	16 in. / 40 cm	7-9 gpm / 26-34 lpm	1500-2000 psi / 105-140 bar	2248 psi / 155 bar	1-1/4 x 6-1/4 in. / 32 x 160 mm Hex	EZ Ride Foot

BREAKER ACCESSORIES

Model	Part No.	Description
22 x 82 mm / 7/8 in. Hex x 3-1/4 in.	02328	Clay Spade, 16 in. U/C
	02330	3 in. Chisel, 14 in. U/C
	02339	1 in. Chisel, 14 in. U/C
	02341	Asphalt Cutter, 5 in. blade x 11 in. U/C
	04401	Moil Point, 18 in. U/C
	04961	Moil Point, 14 in. U/C
	05255	Rod Driver, 3/4 in.
25 x 108 mm / 1 in. Hex x 4-1/4 in.	07702	Moil Point, 14 in. U/C
	07703	Narrow Point, 14 in. U/C
	07704	3 in. Chisel, 14 in. U/C
	07705	Clay Spade, 5-1/2 in. blade
	07706	Asphalt Wedge, 3 in. wide
28 x 160 mm / 1-1/8 in. Hex x 6 in.	02331	Clay Spade, 5-1/2 in. blade
	02332	Asphalt Cutter 5 x 11 in. U/C
	02333	Moil Point 14 in. U/C
	02334	3 in. Chisel, 14 in. U/C
	03990	Chisel Point 14 in. U/C
	04176	Ground Rod Driver, 1 in. rod
	08106	Asphalt Wedge
32 x 160 mm / 1-1/4 in. Hex x 6 in.	02335	Asphalt Cutter, 5 in. blade x 11 in. U/C
	02336	Moil Point, 14 in. U/C
	02337	3 in. Chisel, 14 in. U/C
	02338	1 in. Chisel with heavy duty 14 in. U/C
	04367	Ground Rod Driver, 1 in. rod
	04404	Moil Point Heavy Duty 18 in.
	04405	Clay Spade, 18 in. blade
	09262	Clay Spade, 5-1/2 in. blade



CHIPPING HAMMER

MODEL CH15



The CH15 is a small chipping hammer designed for light duty chipping. It is commonly used for manhole and utility vault modifications or masonry repair and demolition. The body of the tool is shock and heat insulated. Comes with hose whips and flush-face quick disconnect couplers.

SPECIFICATIONS

Application: Chipping concrete, rock, or masonry such as utility vaults, street curbing, masonry work.

Tool Bit Size: .580 hex Shank Oval Collar, Steel Bits

Hyd. Flow: 7-9 gpm / 26-34 lpm

Weight: 16 lbs / 7.25 kg

Length: 17 in. / 43 cm

Width: 3 in. / 8 cm

Connection: 3/8 in. flush face quick disconnect couplers

CHIPPING HAMMERS

Model	Part No.	Weight	Length	Width	Flow Range	Working Pressure	Full Relief Setting	Capacity	Misc.
CH15	CH1513101	16 lbs / 7.3 kg	17 in. / 43 cm	3 in. / 7.6 cm	7-9 gpm / 26-34 lpm	1000-2000 psi / 70-140 bar	2250 psi / 155 bar	.580 Hex - Oval Collar	Solid Retainer

CHIPPING HAMMER ACCESSORIES

Model	Part No.	Description
CH15	66256	Bull Point, .580 Hex, Oval Collar
	66257	Narrow Chisel Bit, .580 Hex, Oval Collar

EARTH AUGER

MODEL EA08



The EA08 features an output torque of 250 ft lb / 339 Nm to handle a wide variety of earth boring applications up to 18 inches / 46 cm in diameter and 42 inches / 107 cm deep. It is configured with 4 handles for two-man operation but can be used by one-man by connecting the torque tube to a power unit or other solid object. An ergonomically designed forward and reverse control valve lever is integrated into the handle. The EA08 accepts 1-3/8 in. hex female augers. The EA08 is furnished with flush face quick disconnect couplers. Augers are sold separately.

SPECIFICATIONS

Application: Earth boring for posts and poles.

Capacity: Up to 18 in. / 46 cm Diameter x 42 in. / 107 cm Long Auger

Hyd. Flow: 7-9 gpm / 26-34 lpm

Weight: 47 lbs / 21 kg

Length: 11 in. / 30 cm

Width: 46 in. / 117 cm

Connection: 3/8 in. flush face quick disconnect couplers

EARTH AUGER

Model	Part No.	Weight	Length	Width	Flow Range	Working Pressure	Full Relief Setting	Capacity	Misc.
EA08	EA08102A	47 lbs / 21 kg	11 in. / 30 cm	46 in. / 117 cm	7-9 gpm / 26-34 lpm	2000 psi / 140 bar	2250 psi / 155 bar	18 in. / 46 cm Dia. Auger	1-3/8 in. Hex Male

EARTH AUGER ACCESSORIES

Part No.	Description
47406	Auger, 2 in. dia x 42 in. OAL (requires 58585)
47407	Auger, 3 in. dia x 42 in. OAL (requires 58586)
47408	Auger, 4 in. dia x 42 in. OAL
47409	Auger, 6 in. dia x 42 in. OAL
47410	Auger, 8 in. dia x 42 in. OAL
47411	Auger, 10 in. dia x 42 in. OAL
47412	Auger, 12 in. dia x 42 in. OAL
47413	Auger, 16 in. dia x 42 in. OAL

Part No.	Description
47414	Auger, 18 in. dia Nursery
47429	Digging Tooth w/Hardface
47430	2 in. Center Screw Bit for 6-12 in.
47431	Center Screw Bit for 3 in.
47432	Center Screw Bit for 4 in.
58585	Drive Coupler, 13/16 x 1-3/8 in. for 47406 Auger

TAMPER

MODEL TA54



TA54103 with
valve in handle

SPECIFICATIONS

Application: Compacting soil around utility poles, sign and fence posts - backfill compaction.

Capacity: Kidney shaped or 6 inch round shoe

Hyd. Flow: 3-9 gpm / 11-34 lpm

Weight: 39 lbs / 18 kg

Length: 71 in. / 180 cm

Width: 4 in. / 10 cm

Connection: -8 SAE Port

FEATURES

- Ideal for soil compaction around utility poles, signs, fence posts and backfill.
- Long stroke keeps the TA54 above the fill
- 1600 blows per minute - 2-1/2 inch stroke
- On/Off valve in handle or in-line valve
- 2 moving parts

TAMPER

Model	Part No.	Weight	Length w/o Couplers and Hose Whips	Width	Flow Range	Working Pressure	Full Relief Setting	Blows/Minute	Valve	Shoe	Coupler
TA54	TA54103	30 lbs / 13.6 kg	71 in. / 180 cm	4 in. / 10 cm	3-9 gpm / 11-34 lpm	1000-2000 psi / 70-140 bar	2250 psi / 155 bar	1600 bpm	In-handle	Kidney	Yes

TAMPER ACCESSORIES

Model	Part No.	Description
TA54	01230	10 ft. Siamese Hose
	00833	Kidney Shoe
	00836	8 ft. Siamese Hose
	00840	Round Shoe, 6 in. dia.

Model	Part No.	Description
TA54	01070	Rectangular Shoe
	72264	In-Line Valve Assembly, OC/CC

CORE DRILL

MODEL CD10



The CD10 is well suited for drilling concrete, masonry and asphalt materials. It can be operated freehand or mounted in an optional drill stand. The CD10 maintains speed regardless of drill load improving the life of the bits. The CD10 features a three-speed gearbox which provides a speed selection to match the best speed for the range of drill bits. It comes with a metal carrying case, water connection with control valve, and a drilling aid to assist in starting freehand drilling without drill bit walk, hose whips and flush face quick disconnect couplers.

SPECIFICATIONS

Application: Drilling concrete, masonry and asphalt materials.
Capacity: 5/8 to 6-3/8 in. Dia. Core Bits
Connection: 1-1/4 in. UNC Male, 1/2 in. UNC Female and 1/2-5/8 in. Male Adapter
RPM: 380, 900 & 1800
Hyd. Flow: 5-13 gpm / 22-50 lpm
Weight: 18 lbs / 8.5 kg
Length: 19 in. / 48 cm
Width: 4 in. / 10 cm
Connection: 3/8 in. flush face quick disconnect couplers

CORE DRILLS

Model	Part No.	Weight	Length	Width	Flow Range	Working Pressure	Full Relief Setting	Performance	Capacity	Misc.
CD10	CD10100	18 lbs / 8.5 kg	19 in. / 48 cm	4 in. / 10 cm	5.8-13 gpm / 22-50 lpm	2000 psi / 140 bar	2250 psi / 155 bar	380, 900 & 1800 rpm	15 to 160 mm Bits	Threaded Spindle

CORE DRILL ACCESSORIES

Model	Part No.	Description
Diamond Core Bits		
CD10	41241	7/8 in. Crown, thin-wall bit
	41242	1 in. Crown, thin-wall bit
	41243	1-1/4 in. Crown, thin-wall bit
	41244	2 in. Segmented, thin-wall bit
	41245	3 in. Segmented, thin-wall bit

Model	Part No.	Description
CD10	41239	Motor Mount for 41238 Anchor Stand
	41246	4 In. Segmented, thin-wall bit
	41247	6 in. Segmented, thin-wall bit
	41778	Carrying Case
	41781	Saddle Clamp
	44957	Vacuum Pump
	62275	CD10 Anchor Stand Integral Motor Mount
	41240	Portable Water Tank



DRILL

MODEL DL07

The DL07 is a variable speed drill with reverse capability. It features a 1/2 inch keyed chuck, dual position assist handle, dual-spool for open center or closed center operation, trigger guard, and is powered by an integral Hyrevz™ motor. A reverse-flow check valve prevents operation if tool is plumbed backwards. The DL07 is furnished with flush face quick disconnect couplers.

SPECIFICATIONS

Application: Drilling holes in wood, metal, masonry and fiberglass.
Capacity: 1/2 in. Chuck / 12 mm
RPM: 350-1250
Hyd. Flow: 4-12 gpm / 15-45 lpm
Weight: 6 lbs / 2.7 kg
Length: 9 in. / 23 cm
Width: 4 in. / 10 cm
Connection: 3/8 in. flush face quick disconnect couplers

IMPACT DRILL

Model	Part No.	Weight	Length	Width	Flow Range	Working Pressure	Full Relief Setting	Torque	Capacity	Misc.
DL07	DL0755201	6 lbs / 2.7 kg	9 in. / 23 cm	4 in. / 10 cm	4-12 gpm / 15-45 lpm	1000-2000 psi / 70-140 bar	2250 psi / 155 bar	350-1250 rpm	5/8-6-3/8 in / 15-160 mm Bits	Dual Spool

Model	Part No.	Description
DL07	01857	Adjustable Chuck & Adaptor 3/4" Square x 3/4 in.
	09624	Jacobs Drill Chuck, 1/2 in.

Model	Part No.	Description
DL07	27628	Jacobs Drill Chuck, 5/8 in.

Contact your Stanley Rep. for Auger bits part number.

HAMMER DRILL

MODEL HD01



The HD01 is ideal for just about any drilling job whether in rock, concrete, wood or masonry, with 4200 bpm and 800 rpm. The hammer function can be turned off for efficient light drilling in wood and metal. The sturdy, light-weight construction features a D-handle and assist handle making it easier to maneuver than a pistol-grip tool. The HD01 chuck accepts SDS Plus bits and accepts other common accessories with a standard SDS Plus shank. A geared drill chuck and adapter are available for use with common wood auger bits or twist drills. The HD01 has 3 modes of operation - drill mode (without percussion), hammer drill mode (drill with percussion) or hammer only mode (percussion only).

SPECIFICATIONS

Application: Drilling in rock, concrete, metal, wood or masonry.
Capacity: SDS Plus Drill Bits - up to 7/8 inches in concrete
Hyd. Flow: 3-9 gpm / 11-34 lpm
Weight: 8.4 lbs / 4.1 kg
Length: 14.1 in. / 36 cm
Height: 5.6 in. / 14 cm
Connection: 3/8 NPT Male Pipe to -8 SAE port (couplers sold separately)

The HD45 is designed for drilling holes in concrete, rock, or masonry from 3/4 in. / 19 mm to 2 in. / 50 mm in diameter and up to 29 in. / 73.7 cm deep as well as core drilling up to 4 in. / 102 mm in diameter. The HD45 uses a Skil 736 shank, carbide tipped, fluted drill bits and requires no fluid or compressed air to clear holes during operation. The HD45 features a feathering trigger for easy starts, adjustable rotation speed (both forward and reverse), and is furnished with hose whips and flush face quick disconnect couplers.

SPECIFICATIONS

Application: Drilling holes in concrete, rock, or masonry.
Capacity: #736 Skil Hex
Hyd. Flow: 7-9 gpm / 26-34 lpm
Weight: 45 lbs / 20 kg
Length: 22 in. / 57 cm
Width: 14 in. / 35 cm
Connection: 3/8 in. flush face quick disconnect couplers

HAMMER DRILL

MODEL HD45



HAMMER DRILLS

Model	Part No.	Weight	Length	Width	Flow Range	Working Pressure	Full Relief Setting	Performance	Capacity	Misc.
HD01	HD0153101	8.4 lbs / 4.1 kg	14.1 in. / 36 cm	5.6 in. / 14 cm	3-9 gpm / 11-34 lpm	750-2000 psi / 50-140 bar	2250 psi / 155 bar	800 rpm @ 5 gpm	7/8 in. Dia.	SDS Plus Shk
HD45	HD4511001	45 lbs / 20 kg	22 in. / 57 cm	14 in. / 35 cm	7-9 gpm / 26-34 lpm	1500-2000 psi / 105-140 bar	2250 psi / 155 bar	300 rpm	#736 Skil Hex	

HAMMER DRILL ACCESSORIES

Model	Part No.	Description
HD01	72992	1/2 in. Friction Chuck Adapter
	27807	3/8 x 12 in. OAL
	27814	1/2 x 12 in. OAL
	27826	3/4 x 12 in. OAL
	27827	3/4 x 18 in. OAL
	27832	7/8 x 18 in. OAL
HD45	30279	HD45 (Skil 736) Adapter to Percussion Core Bit(required)

Contact Your Stanley Rep. for Carbide Percussion Core Bits.

Model	Part No.	Description
Carbide Bits		
HD45	02280	3/4 x 24 in.
	02281	1 x 24 in.
	02282	1-1/4 x 24 in.
	02283	2 x 24 in.
	04668	1 x 18 in.
	04896	1-1/4 x 36 in.
	05163	7/8 x 24 in.
	05167	1-1/2 x 24 in.

IMPACT DRILL/WRENCH

MODEL ID07

The ID07 is a high torque impact wrench used for tightening and loosening nuts and driving lag bolts. Delivers impact torque of up to 500 ft. lbs. / 675 Nm. Available with friction ring or pin type socket retainer.



SPECIFICATIONS

- Application:** Nut and bolt tightening or loosening.
- Capacity:** 1/2 in. Square Drive or 7/16 in. Hex
- Hyd. Flow:** 4-12 gpm / 15-45 lpm
- Weight:** 7.2 lbs / 3.3 kg
- Length:** 9 in. / 23 cm
- Width:** 5 in. / 11 cm
- Connection:** 3/8 in. flush face quick disconnect couplers (Couplers sold separately)

FEATURES

- 500 ft. lbs. / 675 Nm of impact torque
- Durable Swing-hammer mechanism
- Forward-Reverse spool with heavy duty wiper seals and replaceable seal carriers
- Reverse-flow check valve prevents operation if the tool is plumbed backwards
- Cast-in lifting eye
- Built-in selector for Open Center or Closed Center systems
- Replaceable pressure relief valve designed for serviceability
- With a trigger guard

IMPACT DRILL/WRENCH & DRILL

Model	Part No.	Weight	Length	Width	Flow Range	Working Pressure	Full Relief Setting	Torque	Capacity
ID07	ID0782001	7.2 lbs / 3.3 kg	9 in. / 23 cm	5 in. / 11 cm	4-12 gpm / 15-45 lpm	750-2000 psi / 50-140 bar	2250 psi / 155 bar	500 ft lbs	1/2 in. Square Drive
	ID0781501	7.2 lbs / 3.3 kg	9 in. / 23 cm	5 in. / 11 cm	4-12 gpm / 15-45 lpm	750-2000 psi / 50-140 bar	2250 psi / 155 bar	500 ft lbs	7/16 in. Hex

DRILL ACCESSORIES

Model	Part No.	Description
ID07	73636	Assist Handle
	05079	Chuck Adapter, 1/2 in. sq. x 7/16 in. hex QC
	05080	1/2 in. sqr Male x 5/8 in. Female Quick Change
	05117	Adaptor, 7/16 in. Hex Male x 1/2 in. Square Drive
	07192	Adaptor, 1/2 in. Square Drive to 5/8 in. QC
	27845	Pole Bit, 5/8 in. Hex Shank, 9/16 x 8 x 22 in.
	27847	Pole Bit, 5/8 in. Hex Shank, 13/16 x 8 x 22 in.
	7/16 Hex Shank Pole Bits	
	27850	9/16 x 8 x 12, 7/16 in. Hex
	27851	11/16 x 8 x 12, 7/16 in. Hex
	27852	13/16 x 8 x 12, 7/16 in. Hex
	27853	15/16 x 8 x 12, 7/16 in. Hex

Model	Part No.	Description
ID07	27854	1-1/16 x 8 x 12, 7/16 in. Hex
	27855	9/16 x 12 x 16, 7/16 in. Hex
	27856	11/16 x 12 x 16, 7/16 in. Hex
	27857	13/16 x 12 x 16, 7/16 in. Hex
	27858	15/16 x 12 x 16, 7/16 in. Hex
	27859	1-1/16 x 12 x 16, 7/16 in. Hex
	27860	9/16 x 18 x 22, 7/16 in. Hex
	27861	11/16 x 18 x 22, 7/16 in. Hex
	27862	13/16 x 18 x 22, 7/16 in. Hex
	27863	15/16 x 18 x 22, 7/16 in. Hex
	27864	1-1/16 x 18 x 22, 7/16 in. Hex

IMPACT WRENCH

MODEL IW12



SPECIFICATIONS

Application: Nut and bolt tightening or loosening, anchor bolt driving.
Capacity: 3/4 in. Square Drive
Hyd. Flow: 4-12 gpm / 15-45 lpm
Weight: 16.8 lbs / 7.6 kg
Length: 9.5 in. / 24 cm
Width: 4 in. / 10 cm
Connection: 3/8 in. flush face quick disconnect couplers

FEATURES

- Adjustable impact intensity, from 250 to 1200 ft. lb. / 340 to 1632 Nm
- Swing Hammer Mechanism
- Reverse-flow check valve prevents operation if the tool is plumbed backwards
- Feathering trigger
- Reversing valve for instant change over from forward to reverse
- 3/4 inch square drive
- Trigger lock

SPECIFICATIONS

Application: Nut and bolt tightening or loosening, anchor bolt driving
Capacity: 1 in. Square Drive
Hyd. Flow: 7-12 gpm / 26-45 lpm
Weight: 26 lbs / 12 kg
Length: 14.5 in. / 37 cm
Width: 4.5 in. / 11 cm
Connection: 3/8 in. flush face quick disconnect couplers

FEATURES

- Adjustable impact intensity, from 500 to 2500 ft. lb. / 680 to 3400 Nm
- Swing Hammer Mechanism
- Feathering trigger and "D" handle
- Reverse-flow check valve prevents operation if the tool is plumbed backwards
- Reversing valve for instant change over from forward to reverse
- 1 inch square drive

IMPACT WRENCH

MODEL IW16



SPECIFICATIONS

Application: Nut and bolt driving and screw anchor applications, power to Stanley "Hydrant Saver"
Capacity: 1-1/2 in. Square Drive
Hyd. Flow: 7-12 gpm / 26-45 lpm
Weight: 43 lbs / 20 kg
Length: 16.5 in. / 41 cm
Width: 5 in. / 13 cm
Connection: 3/8 in. Male Pipe Adapter to -8 SAE straight thread port

FEATURES

- Adjustable impact intensity, from 800 to 3500 ft. lbs. / 1088 to 4760 Nm
- Swing Hammer Mechanism
- "D" handle
- Feathering trigger
- Reversing valve for instant change over from forward to reverse
- 1-1/2 inch square drive

IMPACT WRENCH

MODEL IW24



IMPACT WRENCHES

Model	Part No.	Weight	Length	Width	Flow Range	Working Pressure	Full Relief Setting	Torque	Capacity	Misc.
IW12	IW12140AX	20 lbs / 9 kg	9 in. / 24 cm	4 in. / 10 cm	4-12 gpm / 15-45 lpm	1000-2000 psi / 70-140 bar	2250 psi / 155 bar	250-1200 ft lbs / 340-1632 Nm	3/4 in. Square Drive	Atex
	IW1214001	16.8 lbs / 7.6 kg	9 in. / 24 cm	4 in. / 10 cm	4-12 gpm / 15-45 lpm	1000-2000 psi / 70-140 bar	2250 psi / 155 bar	250-1200 ft lbs / 340-1632 Nm	3/4 in. Square Drive	
IW16	IW16150	26 lbs / 12 kg	14 in. / 37 cm	5 in. / 11 cm	7-12gpm / 26-45 lpm	1500-2000 psi / 105-140 bar	2250 psi / 155 bar	500-2500 ft lbs / 680-3400 Nm	1 in. Square Drive	
IW24	IW24160	43 lbs / 20 kg	16 in. / 41 cm	5 in. / 11 cm	7-12gpm / 26-45 lpm	1800-2000 psi / 124-140 bar	2250 psi / 155 bar	800-3500 ft lbs / 1085-4745 Nm	1-1/2 in. Square Drive	

IMPACT WRENCH ACCESSORIES

Model	Part No.	Description
IW12	01857	3/4 in. Square Anvil to 3/4 in. Jacobs Chuck
	05117	7/16 in. Hex Shank x 1/2 in. Square male Adapter
	05080	5/8 in. Square Anvil to 5/8 in. Hex Quick Change Adapter
	06790	3/4 in. Square Anvil to 5/8 in. Hex Quick Change Adapter
	71706	Assist Handle Kit

Model	Part No.	Description
IW16	31201	Adapter, 1 in. to 3/4 in. Drive
	31203	Extension, 10 in., 1 in. Drive
	33276	Socket Retainer Pin, 1 in. Square Drive Socket
	33277	Socket Retainer Ring, 1 in. Square Drive Socket

Contact your Stanley Rep. for Sockets Part Number for IW12 and IW16.

CUT-OFF SAWS

MODEL C025



C025 shown with abrasive blade (not included)

SPECIFICATIONS

Application: Cutting metal or masonry materials such as concrete, brick, structural steel, pipe, and guardrail.

Wheel Size: 1 in. arbor, 14 in. diameter abrasive or diamond segmented

Hyd. Flow: 7-9 gpm / 26-34 lpm

Weight: 20 lbs / 9.1 kg

Length: 21 in. / 53.3 cm

Width: 11 in. / 28 cm

Max. Cutting Capacity: 5 in. / 12.7 cm

Connection: 3/8 in. flush face quick disconnect coupler

FEATURES

- Cast aluminum handle with inter-locking safety trigger
- Adjustable wheel guard
- Built-in flow control to prevent over speeding, and a blade brake that retards spindle rotation
- Two models available: clockwise or counter-clockwise rotation
- Hose whips and flush-face quick disconnect couplers

Options include a handle extension kit for upright operation to meet operator preference, a water attachment kit for dust suppression and a saw cart for flat concrete and asphalt cutting.

Model	Part No.	Weight	Length	Width	Flow Range	Working Pressure	Full Relief Setting	Rotation/RPM	Wheel Capacity
C025	C02514101	20 lbs / 9 kg	21 in. / 53 cm	11 in. / 28 cm	7-9 gpm / 26-34 lpm	1500-2000 psi / 105-140 bar	2250 psi / 155 bar	CCW / 4500	14 in. / 35 cm
	C02554101	20 lbs / 9 kg	21 in. / 53 cm	11 in. / 28 cm	7-9 gpm / 26-34 lpm	1500-2000 psi / 105-140 bar	2250 psi / 155 bar	CW / 4500	14 in. / 35 cm

CUT-OFF SAW ACCESSORIES

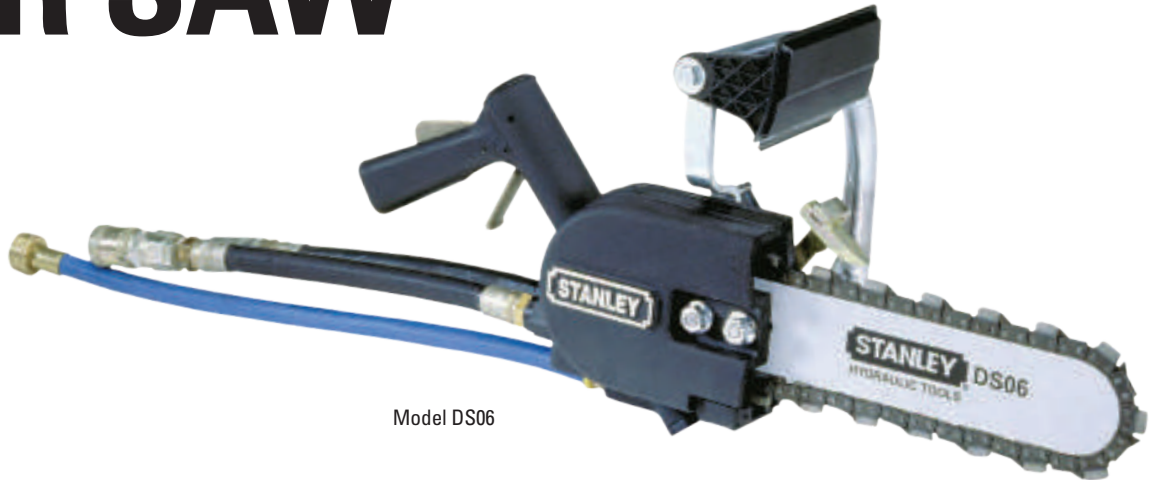
Model	Part No.	Description
C025	02691	14 in. Abrasive Wheel for metal, 1 in. arbor
	02692	14 in. Abrasive Wheel for masonry, 1 in. arbor
	62358	Diamond Blade, 14 in. dry cut
	33228	Water Attachment for C025

Model	Part No.	Description
C025	69290	Slab Saw Cart
	69704	Water Tank for 69290 Saw Cart
	34175	Handle Extension Kit



Part No. 69290 Slab Saw Cart

THE BEST YOU EVER SAW



Model DS06

DS06 & DS11 DIAMOND CHAIN SAWS

Diamond chain saws use a revolutionary chain with laser welded segments impregnated with diamonds. This chain, coupled with a bar containing water channels for chain lubrication, make cutting concrete, brick, masonry, and stone an easy task.

A distinct advantage of a diamond chain saw over a diamond circular saw is cutting square corners without over-cut. A diamond chain saw is the perfect tool for plunge cutting for window and door openings, air conditioner cut-outs, and notching or trimming.

DIAMOND CHAIN TECHNOLOGY

The newest generation of diamond chains dramatically reduce the chain wear of cutting concrete. SealPro™ technology extends chain chassis life by up to 50% or more, simplifies water pressure requirements and reduces the frequency of chain tensioning adjustments.

SealPro™ technology incorporates a patented new chain chassis design that seals out abrasive contaminants. A unique O-ring design seals the rivet-joints of the chain, keeping the abrasive materials out and the lubrication in.

Diamond chains with SealPro™ work at low water pressures eliminating the need for water booster pumps. The new chains can be used with water from an ordinary garden hose and will yield excellent chain life at pressures as low as 20 psi.

Other important advantages of SealPro™ technology are reduced chain stretch resulting in fewer tensioning adjustments over time.



CHAIN SELECTION CHART

Chain	Soft Materials / Brick & Block	Natural Stone	Medium Concrete / Light Reinforcement	Hard Concrete / Heavy Reinforcement
Ultra Chain	■	■	■	
Pinnacle Chain - 37		■	■	■

HAND HELD HYDRAULIC TOOLS
CONCRETE CUTTING CHAINSAWS

DIAMOND CHAIN SAW

MODEL DS06



The DS06 is lightweight, powerful and ideal for fast cutting of concrete, reinforced concrete, conduit, brick, stone and other masonry. 13 inch plunge cut capability allows quick cutting of window, door, conduit and duct openings in walls and notching and trimming of concrete pipe. Trigger activated water for lubrication and cooling is ported through the bar and applied at the point where the concrete is being cut.

The DS06 is provided with The Wall Walker™ to provide leverage for cutting, water connection, and flush face quick disconnect couplers. The bar and chain are sold separately.

SPECIFICATIONS

Application: Cutting concrete, reinforced concrete, conduit, brick, stone and other masonry.

Capacity: 13 in. / 33 cm Bar

Hyd. Flow: 4-6 or 7-9 gpm / 15-23 or 26-34 lpm

(see ordering info)

Weight: 14 lbs / 6 kg (including bar and chain)

Length (without bar): 14.3 in. / 36 cm

Width: 9 in. / 23 cm

Connection: 3/8 in. flush face quick disconnect couplers

The DS11 is a heavy duty and powerful diamond chain saw that is ideal for fast cutting of concrete, reinforced concrete, conduit, brick, stone and other masonry. Plunge cut capability allows quick cutting of window, door, conduit and duct openings in walls and notching and trimming of concrete pipe. Trigger activated water for lubrication and cooling is ported through the bar and applied at the point where the concrete is being cut.

The DS11 features ergonomic handles and guards to help reduce operator fatigue, water connection, flush face quick disconnect couplers, and is powered by a Stanley Hyrevz™ motor. The Wall Walker™ that provides leverage for cutting is

standard equipment. The bar and chain are sold separately.

SPECIFICATIONS

Application: Cutting concrete, reinforced concrete, conduit, brick, stone and other masonry.

Capacity: 15 or 18 in. / 38 or 46 cm Bar

Hyd. Flow: 7-9 gpm / 26-34 lpm

Weight: 26 lbs / 11 kg

Length: 38 in. / 97 cm

Width: 9 in. / 23 cm

Connection: 3/8 in. flush face quick disconnect couplers

DIAMOND CHAIN SAW

MODEL DS11



DIAMOND SAWS

Model	Part No.	Weight	Length	Width	Flow Range	Working Pressure	Full Relief Setting	Output
DS06	DS06200001*	14 lbs / 6 kg	24 in. / 61 cm	9 in. / 23 cm	4-6 gpm / 15-23 lpm	1000-2000 psi / 70-140 bar	2250 psi / 155 bar	13 in. / 33 cm Bar
	DS06300001*	14 lbs / 6 kg	24 in. / 61 cm	9 in. / 23 cm	7-9 gpm / 26-34 lpm	1000-2000 psi / 70-140 bar	2250 psi / 155 bar	13 in. / 33 cm Bar
DS11	DS113000*	26 lbs / 11 kg	38 in. / 97 cm	9 in. / 23 cm	7-9 gpm / 26-34 lpm	1000-2000 psi / 70-140 bar	2250 psi / 155 bar	18 in. / 46 cm Bar

* NOTE: Bar and Chain Not Included - Must be Ordered Separately

DIAMOND SAW ACCESSORIES

Model	Part No.	Description
DS06	35037	Bar, 13 in. Sprocket Nose
	56799	Diamond Chain, 13 in. Ultra 25
	56800	Diamond Chain, 13 in. Pinnacle 25
DS06/DS11	20857	Chain Repair Spinner
	20858	Chain Repair Breaker
	20859	Diamond Chain Butterfly Repair Kit
	60859	Water Flow Meter, 0-7 gpm
	56767	Connecting Link, 5-Pack
	DCP30101	Water Pump 12 DC - clips for Battery (GT18)
	DCP30100	Water Pump 12 VDC - Marine Plug

Model	Part No.	Description
DS11	30306	Bar, 18 in., sprocket nose
	56802	Diamond Chain, 18 in., Ultra 37
	56832	Diamond Chain, 18 in., Pinnacle 37
	23517	Sprocket Wrench
	56801	Diamond Chain Ultra-32 15 in.
	56803	Diamond Chain Pinnacle-32 15 in.
	30305	15 in. Bar DC15 Sprocket Nose

UTILITY CHAINSAW

MODEL DS12



Stanley's Utility Chainsaw is a revolutionary cutting method designed to change the way the job gets done. From ductile iron to plastic pipe, this chain saw will get you in and out of the job faster, easier and safer than other methods. Utilizing a brazed layer diamond coating on a durable chain chassis, this technology provides improved access with far less excavation in a confined space such as cutting water main pipe in a ditch.

UTILITY CHAINSAW

Model	Part No.	Weight	Length	Width	Flow Range	Working Pressure	Full Relief Setting	Capacity	Misc.
DS12	DS1231801	26 lbs / 11.8 kg	38 in. / 97 cm	9 in. / 23 cm	7-9 gpm / 26-34 lpm	1000-2000 psi / 70-140 bar	2250 psi / 155 bar	18 in. / 46 cm Utility Bar	Utility Bar & Chain with HTMA couplers

UTILITY CHAINSAW ACCESSORIES

Model	Part No.	Description
DS12	71048	18" Utility Chain
	71047	18" Bar for Utility Chain
	71055	Pipe Clamp Assembly
	71046	Drive Sprocket
	23517	Sprocket Wrench

SPECIFICATIONS

Capacity: 18 in. / 46 cm Bar
Hyd. Flow: 7-9 gpm / 26-34 lpm
Working Pressure: 1000-2000 psi / 70-140 bar
Full Relief Setting: 155 bar
Weight: 26 lbs / 12 kg
Length: 38 in. / 97 cm
Width: 9 in. / 23 cm
Connection: 3/8 in. flush face quick disconnect couplers



71055 Pipe Clamp Assembly

PORTABLE WATER PUMP

MODEL DCP30



The DCP30 is a 12 volt pump capable of self priming up to an eight foot lift. It delivers 2.2 GPM at 40 PSI and is thermal protected to prevent overheating. A built in check valve prevents backward flow and maintains pressure after shut-off. The DCP30 is available with battery clips or a marine style DC plug. Ideal for providing adequate water for diamond concrete or ductile iron chain saws.

SPECIFICATIONS

Voltage Requirement: 12 vdc
Current: 9.5 amps
Maximum Water Flow: 3.3 gpm / 12.5 lpm
Cut-Our Pressure: 45 psi / 3.1 bar
Weight: 13 lbs / 6 kg
Length: 13 in / 318 mm
Width: 11 in. / 279 mm
Height: 15 in / 381 mm

PORTABLE WATER PUMP

Model	Description
DCP30101	Water Pump, 12v DC, Battery Clip
DCP30100	Water Pump, 12v DC, Marine Type

PRUNER

MODEL PR41



SPECIFICATIONS

Application: Tree Trimming
Capacity: 2.25 in. / 5.7 cm Cut
Hyd. Flow: 3-9 gpm / 11-34 lpm
Weight: 11.5 lbs / 5.2 kg
Length: 84 in. / 213 cm
Width: 6 in. / 15 cm
Connection: 3/8 in. NPT Male Adapter
 (couplers sold separately)

FEATURES

- Used for selective tree limb pruning up a 2-1/4 inch / 5.7 cm cut
- Ideal for use by right-of-way crews, arborists, utilities, parks departments, grounds keepers, and forest trail maintenance crews
- Lightweight head design that provides easy handling
- Full power on both opening and closing cycles
- Improved geometry of knife and hook provides increased cutting efficiency
- Fiberglass pole handle

PRUNER

Model	Part No.	Configuration	Weight	Length	Flow Range	Working Pressure	Full Relief Setting	Cutting Component (included)	Couplers
PR41	PR41131	Open Center	11.5 lbs / 5.2 kg	84 in. / 213.4 cm	3-9 gpm / 11-34 lpm	1000-2000 psi / 70-140 bar	2250 psi / 155 bar	2-1/4 in. / 5.7 cm Cut Knife	No

PRUNER ACCESSORIES

Model	Part No.	Description
PR41	56849	Knife

The GR30 can be used for grinding and cleaning with either cup or standard type grinding wheels and wire or nylon brushes. The GR30 features an assist handle, adjustable, rotating wheel guard, insulated handle, flow control for over-speed prevention, counter-clockwise rotation and is powered by an integral Stanley Hyrevz™ motor. The GR30 is furnished with hose whips and flush face quick disconnect couplers.

SPECIFICATIONS

Application: Grinding and cleaning.
Capacity: 5/8 in. - 11 Arbor, 9 in. / 22.8 cm Dia. Wheel
Hyd. Flow: 7-9 gpm / 26-34 lpm
Weight: 13 lbs / 5.9 kg
Length: 8 in. / 20 cm
Width: 28 in. / 71 cm
Connection: 3/8 in. flush face quick disconnect couplers

GRINDER

MODEL GR30



Model	Part No.	Weight	Length	Width	Flow Range	Working Pressure	Full Relief Setting	Rotation/RPM	Wheel Capacity
GR30	GR3070101	13 lbs / 5.9 kg	8 in. / 20 cm	10 in. / 25.4 cm	7-9 gpm / 26-34 lpm	1500-2000 psi / 70-140 bar	2250 pis / 155 bar	CCW / 5800	9 in. / 22.8 cm

GRINDER ACCESSORIES

Model	Part No.	Description
GR30	02587	Grinding Wheel for metal, 9 in. dia. x 5/8 in., 11 thd. Arbor
	02588	Grinding Wheel for masonry, 9 in. dia. x 5/8 in., 11 thd. Arbor
	03691	Grinding Wheel, 7 in. dia. x 5/8 in., 11 thd. Arbor
	05194	Depressed Center Wheel Adapter

SUMP PUMP

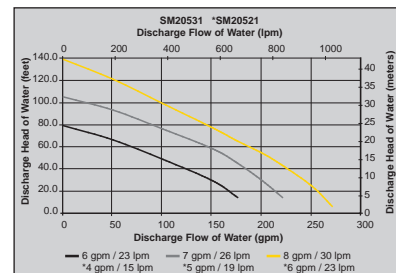
MODEL SM20



SPECIFICATIONS

Application: Pumping Liquids
Capacity: 250 gpm / 946 lpm,
 2.5 in. NPTF Discharge
Hyd. Flow: 4-9 gpm / 15-34
 lpm (see order info)
Weight: 13.7 lbs / 6.3 kg
Length: 7.5 in. / 19 cm
Width: 9.6 in. / 24 cm
Connection: 3/8 in. flush face
 quick disconnect couplers

The SM20 is one of the lightest and most durable pumps available. Completely submersible and pumping 250 gpm / 946 lpm at a 10-foot head and moving solids up to 5/16 of an inch makes it ideal for vaults and manholes. It features a cast aluminum inlet, steel or urethane impeller, Hyrevz™ motor, and is furnished with flush face quick disconnect couplers.



SUMP PUMP

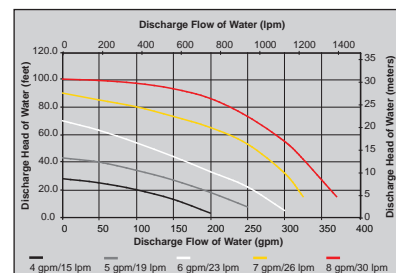
MODEL SM21



SPECIFICATIONS

Application: Pumping Liquids.
Capacity: 300 gpm / 1125 lpm,
 2.5 in. / 63.5 mm Discharge
Hyd. Flow: 4-9 gpm / 15-34
 lpm
Weight: 20 lbs / 11.34 kg
Length: 16 in. / 40.6 cm
Width: 6.25 in. / 15.9 cm
Connection: 3/8 in. flush face
 quick disconnect couplers

The SM21 is the ideal pump for areas of confined space and small openings. The SM21 pumps up to 300 gpm / 1125 lpm at a 50-foot head. The cast iron impeller is within 3/4 of an inch of the base allowing the pump to remove more liquids than other pumps. The SM21 features a lifting eye, 2.5 in. NPTF discharge, and is furnished with hose whips and flush face quick disconnect couplers.



SUMP PUMP

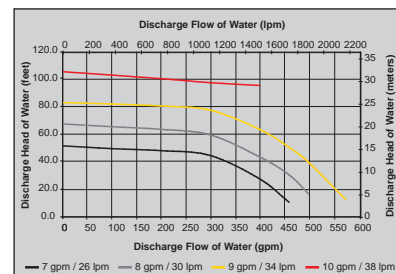
MODEL SM50



SPECIFICATIONS

Application: Pumping Liquids
Capacity: 500 gpm / 1890 lpm,
 3 in. Male Camlock Discharge
Hyd. Flow: 7-12 gpm / 26-45
 lpm
Weight: 21 lbs / 9.5 kg
Length: 10.5 in. / 26.7 cm
Width: 10 in. / 25.4 cm
Connection: 3/8 in. flush face
 quick disconnect couplers

The SM50 can pump an impressive 500 gallons per minute / 30,000 gallons per hour. It is completely submersible, can draw water down to a depth of 3.5 inches, and can run dry. It features a cast aluminum inlet, stainless steel impeller, lifting eye, 3 inch Camlock male discharge, and is furnished with flush face quick disconnect couplers.



TRASH PUMP

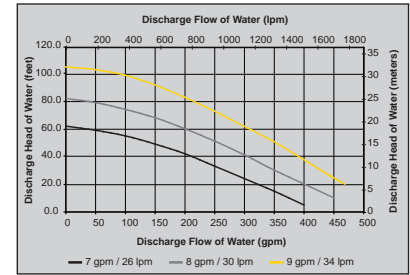
MODEL TP03



SPECIFICATIONS

Application: Pumping Liquids with Solids up to 3 in.
Capacity: 450 gpm / 1688 lpm, 3 in. NPTF Discharge
Hyd. Flow: 7-9 gpm / 26-34 lpm
Weight: 59 lbs / 26.7 kg
Length: 14 in. / 35.5 cm
Width: 12 in. / 30.4 cm
Connection: 3/8 in. flush face quick disconnect couplers

The TP03 is a submersible trash pump and will pump liquids with concentrations of solids up to 25% by volume. It features a tough urethane bowl and impeller, lifting eye, removable top plate, 3 inch NPTF discharge, and flush face quick disconnect couplers.



TRASH PUMP

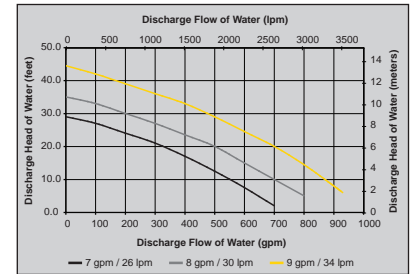
MODEL TP08



SPECIFICATIONS

Application: Pumping liquids with Solids up to 4 in.
Capacity: 800 gpm / 3028 lpm, 4 in. Male Camlock Discharge
Hyd. Flow: 7-9 gpm / 26-34 lpm
Weight: 63 lbs / 28.5 kg
Length: 19 in. / 48.3 cm
Width: 15 in. / 38 cm
Connection: 3/8 in. flush face quick disconnect couplers

The TP08 is a heavy duty submersible trash pump capable of pumping high volumes of water, sand slurries, gravel, sludge and solids up to 4 inches in diameter. It features a steel bowl, cast iron impeller, polyethylene wear plates, carrying handle, removable top plate, 4 inch male Camlock discharge, and flush face quick disconnect couplers.



SUBMERSIBLE PUMPS

Model	Part No.	Weight	Length	Width	Flow Range	Working Pressure	Full Relief Setting	Output	Discharge	Impeller
SM20	SM2043101	13.7 lbs / 6.3 kg	7.5 in. / 19 cm	9.6 in. / 24 cm	7-9 gpm / 26-34 lpm	1000-2000 psi / 70-140 bar	2250 psi / 155 bar	250 gpm / 946 lpm	2.5 in. / 63.5 mm	Steel
	SM2052101	13.7 lbs / 6.3 kg	7.5 in. / 19 cm	9.6 in. / 24 cm	4-6 gpm / 15-23 lpm	1000-2000 psi / 70-140 bar	2250 psi / 155 bar	250 gpm / 946 lpm	2.5 in. / 63.5 mm	Urethane
	SM2053101	13.7 lbs / 6.3 kg	7.5 in. / 19 cm	9.6 in. / 24 cm	7-9 gpm / 26-34 lpm	1000-2000 psi / 70-140 bar	2250 psi / 155 bar	250 gpm / 946 lpm	2.5 in. / 63.5 mm	Urethane
SM21	SM2151101	20 lbs / 9.1 kg	16 in. / 40.6 cm	6.25 in. / 15.9 cm	4-9 gpm / 15-34 lpm	1500-2000 psi / 105-34 lpm	2250 psi / 155 bar	300 gpm / 1125 lpm	2.5 in. / 63.5 mm	Cast Iron
SM50	SM50100	21 lbs / 9.5 kg	10.5 in. / 26.7 cm	10 in. / 25.4 cm	7-12 gpm / 26-45 lpm	1000-2000 psi / 70-140 bar	2250 psi / 155 bar	500 gpm / 1890 lpm	3 in. / 75 mm	Steel
TP03	TP0300301	32 lbs / 14.52 kg	14 in. / 35.5 cm	12 in. / 30.4 cm	7-9 gpm / 26-34 lpm	2000 psi / 140 bar	2250 psi / 155 bar	450 gpm / 1688 lpm	3 in. / 75 mm	Urethane
TP08	TP08013	59 lbs / 26.7 kg	19 in. / 48.3 cm	15 in. / 38 cm	7-9 gpm / 26-34 lpm	2000 psi / 140 bar	2250 psi / 155 bar	800 gpm / 3028 lpm	4 in. / 100 mm	Steel

SUBMERSIBLE PUMP ACCESSORIES

Model	Part No.	Description
SM20/SM21/SM50	02183	Fire Hose, 25 in. x 2-1/2 in.
	02317	Fire Nozzle - 1 in. output
	05133	2-1/2 in. Thread Adaptor for Sump Pump to Fire Hose
	05134	50 ft. Fire Hose, 2-1/2 in. dia.
	05135	Spanner Wrench for Pin Lug Coupler
	15248	Adapter, 3 in. female camlock x male fire hose (nh) thread
	59101	Adapter, 2-1/2 in. male NPT x 3 in. male Camlock
	56761	Discharge Hose

Model	Part No.	Description
SM20/SM21/SM50	52720	3 in. Adapter
	02812	Elbow
TP03	52720	Adapter, 3 in. male NPT x 3 in. male Camlock
	56761	Lay-Flat Discharge Hose, 3 in. x 25 ft with Camlock fittings
	73576	Carrying Handle
	73577	Quick Link Connector
TP08	65624	Lay-Flat Discharge Hose, 4 in. x 25 ft with Camlock Fittings

POWER UNIT

MODEL GT18



The GT18 hydraulic power unit is engineered for continuous professional use and is optimized to deliver ideal flows and pressures to both Type 1 and Type 2 hydraulic tools. Its powerful 18 HP Briggs & Stratton engine and best-in-class cooling system deliver the power and heat rejection pros need to keep tools working uninterrupted all day in all types of conditions. The GT18 features a computerized all-electric throttle control system that idles-down the engine when tools aren't running, saving fuel and extending service life. Its feature-rich, dependable operation make the GT18 the workhorse of the industry.

SPECIFICATIONS

Application: Heavy-duty continuous use hydraulic power supply for use with both Type 1 & Type 2 tools
Capacity: 5 or 8 gpm / 20 or 30 lpm
Pressure: 2000 psi / 140 bar
Weight: 330 lbs / 150 kg
Length: 35 in. / 90 cm
Width: 23 in. / 58.4 cm
Height: 29.5 in. / 74.9 cm

Engine: Briggs & Stratton 18 hp Vanguard
Connection: 3/8 in. flush face quick disconnect couplers
Heat Rejection: Up to 5 hp

FEATURES

- Meets HTMA requirements for Type 1 and Type 2 hydraulic tool circuits.
- 5 or 8 gpm / 20 or 30 lpm @ 2000 psi
- Heat rejection capacity exceeding 5 hp.
- Computerized throttle control
- Quartz hour meter
- Direct mounted hydraulic pump
- Air-oil cooler
- Lift and latch handle
- Pneumatic tires
- Maintenance-free battery
- Hydraulic and engine oil filter
- Engine oil level shut-down
- 5 gallon / 20 liters fuel tank capacity

The Hydraulic power to operate Stanley's line of hydraulic railroad tools compact design is ideal for all your on-site hydraulic power needs. The ultra efficient hydraulic tool circuit cooling provides comfortable tool operation even in the most demanding environments.

SPECIFICATIONS

Application: For use with both Type 1 or Type RR.
Capacity: Two 4 gpm / 15 lpm circuits or one 8 gpm / 30 lpm circuit
Weight: 330 lbs / 150 kg
Length: 35 in. / 90 cm
Width: 23 in. / 59 cm
Height: 29.5 in. / 74.9 cm
Pressure: 2000 psi / 140 bar
Fuel Tank Capacity: 5 gal. / 20 liter
Engine: 18 hp Briggs

FEATURES

- Compact and lightweight.
- Computerized electronic throttle control.
- In-tank hydraulic filtration.
- Pressurized engine oil lubrication.
- Locking handle.
- Electric Start.
- Quiet Operation.
- Small size - can fit into small truck or van.
- Portable - can be wheeled around job site like a wheelbarrow.
- Serviceability - can be serviced by small engine dealers.

POWER UNIT

MODEL GTR20



GTR20

HYDRAVERTER

MODEL HV18



SPECIFICATIONS

Application: Operates Hydraulic Tools using Existing Hydraulic Equipment.

Capacity: 8 gpm / 30 lpm

Pressure: 2000 psi

Weight: 100 lbs / 45 kg

Length: 21 in. / 53 cm

Width: 19 in. / 48 cm

Height: 20 in. / 51 cm

Connection: 3/8 in. flush face quick disconnect couplers

The HV18 is an efficient, clean air-oil cooled portable hydraulic system for operating hydraulic tools from another hydraulic source such as a backhoe, excavator, or skidsteer loader. The HV18 obtains its power from the hydraulics of any backhoe, excavator, skidsteer loader or any other hydraulic equipment capable of supplying up to 35 gpm / 132 lpm at 2000-3000 psi with back-pressures up to 400 psi. The HV18 features cooled hydraulic oil for the hydraulic tools independent of the source oil. It is the perfect solution for operating hydraulic tools using existing hydraulic equipment.

ORDER INFORMATION

Model	Part No.	Weight	Length	Width	Height	Engine	Output Flow	Pressure	Misc.
GT18	GT18B01	330 lbs / 150 kg	35 in. / 90 cm	23 in. / 58.4 cm	29 in. / 74 cm	Briggs	8 gpm / 30 lpm	2000 psi / 140 bar	Auto Throttle, CE
GTR20	GTR20B01	330 lbs / 150 kg	35 in. / 90 cm	23 in. / 59 cm	29 in. / 74 cm	Briggs	(2) 4 gpm / 15 lpm or (1) 8 gpm / 30 lpm	2000 psi / 140 bar	Auto Throttle
HV18	HV18300	100 lbs / 45 kg	21 in. / 53 cm	19 in. / 48 cm	20 in. / 51 cm	n/a	7-9 gpm / 26-34 lpm / 16-35 gpm Input	2000 psi / 140 bar	-
	HV18301	100 lbs / 45 kg	21 in. / 53 cm	19 in. / 48 cm	20 in. / 51 cm	n/a	7-9 gpm / 26-34 lpm / 13-25 gpm Input	2000 psi / 140 bar	-

ACCESSORIES

Model	Part No.	Description
GT18/GTR20	13360	Hose Basket Conversion Kit
	33212	Weather Cover
	31848	Dual Hose, 50 ft. x 1/2 in., w/couplers (15 m x 13 mm)
	31972	Dual Hose, 20 ft. x 1/2 in., w/couplers (7.5 m x 13 mm)
	58633	Twinned Hose, 25 ft. x 1/2 in., w/couplers (7.5 m x 13 mm)
	58634	Twinned Hose, 50 ft. x 1/2 in., w/couplers (15 m x 13 mm)

STANLEY

UNDERWATER HYDRAULIC TOOLS



LIGHT TO MEDIUM DUTY BREAKERS

MODEL BR45 - 40# PLUS CLASS

18 KG / 40 LB

5-15 CM / 2-6 IN.
CONCRETE



The BR45 is the smallest breaker in the Stanley Hydraulic Tool lineup of underwater breakers. The feathering on/off valve controls speed and allows easier initial tool placement. Standard 1" hex chuck and latch retainer. Painted hi-visibility yellow.

SPECIFICATIONS

Application: The BR45 is a rugged, powerful and lightweight breaker in the 40-55 lb class used for light to medium concrete, rock and coral breaking and removal.

Hyd. Flow: 7-9 gpm / 26-34 lpm

Weight: 45 lbs / 20 kg

Length: 25 in. / 63.4 cm

Width: 14 in. / 35 cm

Connector: 3/8 in. / 0.9 cm Male Pipe Head Hose End

Steel Capacity: 4-1/4 x 1 in. Hex / 25 x 108 mm

Couplers: 3/8 in. / 0.9 cm flush face

FEATURES

- T-Handle with large on/off trigger for precise control
- Stainless Steel spool and fasteners
- Trouble free diaphragm accumulator provides additional blow energy and reduces recoil
- Feathering on/off valve allows easy initial tool bit placement
- Uses standard 1" x 4 1/4" hex shank tool bits
- Four tie rod design for durability
- Operates in any position
- Modular design for ease of service
- Latch retainer

MEDIUM DUTY BREAKERS

MODEL BR67 - 70# PLUS CLASS

32 KG / 70 LB

15-20 CM / 6-8 IN.
CONCRETE



BR67

The BR67 is a medium sized breaker in Stanley Hydraulic Tools line up of underwater paving breakers. The feathering on/off valve controls speed and allows easier initial tool placement. Standard 1 1/8" x 6" hex chuck and latch retainer. Painted hi-visibility yellow.

SPECIFICATIONS

Application: The BR67 is in the 70 lbs class of breakers and is used for medium concrete and rock breaking, coral removal and rod driving.

Steel Capacity: 1-1/8 in. x 6 in. / 28 x 160 mm

Hyd. Flow: 7-9 gpm / 26-34 lpm

Weight: 78 lbs / 36 kg-BR67 with T-Handle

Length: 29 in. / 73 cm-BR67 with T-Handle

Width: 16 in. / 41 cm-BR67 with T-Handle

Connector: 3/8 in. / 0.9 cm flush face

FEATURES

- Stainless Steel spool and fasteners
- Handle with large on/off trigger for precise control
- Trouble free diaphragm accumulator provides additional blow energy and reduces recoil
- Feathering on/off valve allows easy initial tool bit placement
- Uses standard 1 1/8" x 6" hex shank tool bits
- Four tie rod design for durability
- Operates in any position
- Modular design for ease of service
- Latch retainer

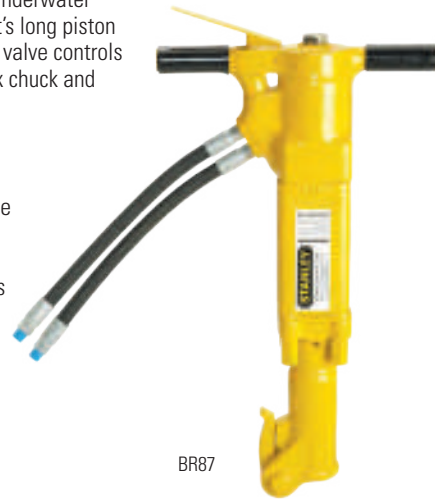
HEAVY DUTY BREAKERS

MODEL BR87 90# PLUS CLASS

41 KG / 90 LB

**20+ CM / 8+ IN.
CONCRETE**

The BR87 is the largest breaker in Stanley Hydraulic Tools line up of underwater paving breakers. The BR87 is in the 90 lb class of breakers and with its long piston stroke, is our hardest hitting hand held breaker. The feathering on/off valve controls speed and allows easier initial tool placement. Standard 1 1/8" x 6" hex chuck and latch retainer. Painted hi-visibility yellow.



BR87

SPECIFICATIONS

Application: It is used for heavy concrete and rock breaking, coral removal and rod and anchor driving.

Steel Capacity: 1-1/8 in. x 6 in. / 28 x 160 mm

Hyd. Flow: 7-9 gpm / 26-34 lpm

Weight: 84 lbs / 38 kg

Length: 29 in. / 73.6 cm

Width: 16 in. / 41 cm

Connector: 3/8 in. / 0.9 cm Male Pipe Head
Hose End

Couplers: 3/8 in. / 0.9 cm flush face

FEATURES

- T-Handle with large on/off trigger for precise control
- Stainless Steel spool and fasteners
- Trouble free diaphragm accumulator provides additional blow energy and reduces recoil
- Feathering on/off valve allows easy initial tool bit placement
- Uses standard 1 1/8" x 6" hex shank tool bits
- Four tie rod design for durability
- Operates in any position
- Modular design for ease of service
- Latch retainer

ORDERING INFORMATION

BREAKERS (UNDERWATER)

Model	Part No.	Weight	Length	Width	Flow Range	Working Pressure	Full Relief Setting	Capacity	Misc.
BR45	BR45350	43 lbs / 19.5 kg	25 in. / 63.4 cm	14 in. / 35 cm	7-9 gpm / 26-34 lpm	1500-2000 psi / 105-140 bar	2250 psi / 155 bar	4-1.4 x 1 in. Hex / 25 x 108 mm	T Handle
BR67	BR67320	73 lbs / 33 kg	29 in. / 73.6 cm	16 in. / 41 cm	7-9 gpm / 26-34 lpm	1500-2000 psi / 105-140 bar	2250 psi / 155 bar	1-1/8 in. x 6 in. / 28 x 160 mm	T Handle
BR87	BR87320	80 lbs / 38 kg	27 / 68 cm	16 in. / 40 cm	7-9 gpm / 26-34 lpm	1500-2000 psi / 105-140 bar	2250 psi / 155 bar	1-1/8 in. x 6 in. / 28 x 160 mm	T Handle

BREAKER ACCESSORIES

Model	Part No.	Description
BR45	07702	Moil Point, 1 in. Hex, 14 in. Under Collar
	07703	Narrow chisel, 1 in. Hex, 14 in. Under Collar
	07704	3 in. Wide Chisel, 1 in. Hex, 14 in. Under Collar
	07705	Clay Spade, 1 in. Hex, 5-1/2 in. Wide Blade
	07706	Asphalt Wedge, 1 in. Hex, 3" Wide Blade
BR45 / BR67 / BR87	03971	Flush-Face Coupling Set, 3/8 in. NPT
	03974	Flush-Face Coupling Set, 1/2 in. NPT
	31848	Dual Hose, 50 ft. x 1/2 in., with Couplers
	31972	Dual Hose, 25 ft. x 1/2 in., with Couplers
	58633	Twinned Hose, 25' x 1/2 in. with Couplers
	58634	Twinned Hose, 50' x 1/2 in. with Couplers

Model	Part No.	Description
BR67 / BR87	02331	Clay Spade, 1-1/8 in. Hex, 5-1/2 in. Wide Blade
	02332	Asphalt Cutter, 1-1/8 in. Hex, 5 in. Wide Blade
	02333	Moil Point, 1-1/8 in. Hex, 14 in. Under Collar
	02334	3 in. Wide Chisel, 1-1/8 in. Hex, 14 in. Under Collar
	03990	Narrow Chisel, 1-1/8 in. Hex, 14" Under Collar
	04176	Rod Driver, 1-1/8 in. Hex, 1 in. Rod
	08106	Asphalt Wedge, 1-1/8 in. Hex

CHIPPING HAMMER

MODEL CH15



The ergonomic “D” handle and short 17” over all length, makes it easy to use in confined and hard to access locations. The floating trigger design requires minimal pressure across any part of its surface to engage the tool. The trigger is protected within the handle to prevent accidental operation of the tool. The CH15 has a solid bit retainer and will accept .580 hex shank, oval collar tool bits. Painted hi-visibility yellow.

FEATURES

- Stainless Steel spool and fasteners
- Tool body has rubber coating for diver comfort
- Floating trigger design requires minimal pressure
- Uses standard .580 hex shank, oval collar tool bits
- High power to weight ratio
- Operates in any position

SPECIFICATIONS

Application: The CH15 is a small and compact hydraulic Chipping Hammer used for light chipping and scaling underwater.
Tool Bit Size: .580 hex Shank Oval Collar, Steel Bits
Hyd. Flow: 7-9 gpm / 26-34 lpm
Working Pressure: 1000-2000 psi / 70-140 bar
Full Relief Setting: 2250 psi / 155 bar
Weight: 16 lbs / 7.25 kg
Length: 17 in. / 43 cm
Width: 3 in. / 8 cm
Couplers: Yes
Connection: 3/8 in. flush face quick disconnect couplers

CHIPPING HAMMER

Model	Part No.	Weight	Length	Width	Flow Range	Working Pressure	Full Relief Setting	Capacity
CH15	CH1533101	16 lbs / 7.3 kg	17 in. / 43 cm	3 in. / 7.6 cm	7-9 gpm / 26-34 lpm	1000-2000 psi / 70-140 bar	2250 psi / 155 bar	.580 Hex - Oval Collar

CHIPPING HAMMER ACCESSORIES

Model	Part No.	Description
CH15	03971	Flush Face Coupling Set, 3/8 in. NPT
	03974	Flush Face Coupling Set, 1/2 in. NPT
	31848	Dual Hose, 50 ft. x 1/2 in. with Couplers
	31972	Dual Hose, 25 ft. x 1/2 in. with Couplers

Model	Part No.	Description
CH15	58633	Twinned Hose, 25 ft. x 1/2 in. with Couplers
	66256	Twinned Hose, 50 ft. x 1/2 in. with Couplers
	66256	Moil Point, 9 in., .580 Hex Shank, Oval Collar
	66257	Narrow Chisel, 9 in., .580 Hex Shank, Oval Collar



DRILL

MODEL DL07



The Stanley DL07 hydraulic drill is a forward/reverse, variable speed drill with a 1/2" keyed chuck for underwater drilling applications. A two position assist handle and trigger guard are standard. Painted hi-visibility yellow.

FEATURES

- Integral Stanley Hyrevz gear motor produces high torque
- Stainless steel spools and fasteners
- Forward-Reverse with variable speed
- Dual position assist handle provides increased control
- Oversized trigger with guard for operator comfort
- Wiper seals on reversing and trigger spool
- Built in reverse check valve endures long seal life
- Plasitol handle for comfortable ergonomic grip
- Forward position of handle provides better balance

- Open center / closed center dual spool feature
- Cast-in lifting eye

SPECIFICATIONS

Application: The DL07 has more than enough torque to drill most steel, masonry, wood or coral. Drilling holes in wood, metal, masonry and fiberglass.

Capacity: 1/2 in. Chuck / 12.7 mm

RPM: 350-1250

Hyd. Flow: 3-10 gpm / 11-38 lpm

Weight: 7.8 lbs / 3.5 kg

Length: 10-1/2 in. / 26.7 cm

Width: 4 in. / 10 cm

Connection: 3/8 in. flush face quick disconnect couplers

DL07 Speed / Hydraulic Flow	DL07 Torque at psi / bar
350 rpm @ 3 gpm / 11.3 lpm	4 ft. lbs @ 500 psi / 5.4 Nm @ 35 bar
475 rpm @ 4 gpm / 15 lpm	9 ft. lbs. @ 1000 psi / 12.2 Nm @ 70 bar
750 rpm @ 4 gpm / 23 lpm	14 ft. lbs. @ 1500 psi / 19 Nm @ 105 bar
1000 rpm @ 8 gpm / 30 lpm	19 ft. lbs @ 2000 psi / 25.7 Nm @ 140 bar
1250 rpm @ 10 gpm / 38 lpm	

IMPACT DRILL

Model	Part No.	Weight	Length	Width	Flow Range	Working Pressure	Full Relief Setting	Torque	Capacity	Misc.
DL07	DL0765201	7.8 lbs / 3.5 kg	10-1/2 in. / 26.7 cm	4 in. / 10 cm	3-10 gpm / 11-38 lpm	1000-2000 psi / 70-140 bar	2250 psi / 155 bar	350-1250 rpm	1/2 in. / 12 mm Chuck	Dual Spool

IMPACT DRILL ACCESSORIES

Model	Part No.	Description
DL07	01857	Adjustable Chuck & Adaptor 3/4" Square x 3/4 in.
	04365	3/4 in. Chuck, 3 JT Taper, Use 7/16 in. Bits
	03971	Flush Face Coupling Set, 3/8 in. NPT
	03974	Flush Face Coupling Set, 1/2 in. NPT

Model	Part No.	Description
DL07	31848	Dual Hose, 50 ft. x 1/2 in., with Couplers
	31972	Dual Hose, 25 ft. x 1/2 in., with Couplers
	58633	Twinned Hose, 25 ft. x 1/2 in. with Couplers
	58634	Twinned Hose, 50 ft. x 1/2 in. with Couplers

HAMMER DRILL

MODEL HD45



The feathering on/off valve and adjustable rotation speed allows easy drill bit start-up and precise control. The high torque rotation motor drives standard 736 Skil hex carbide tipped drill bits and is capable of drilling a 2" diameter hole up to 29" deep. Fluted drill bits require no water or air to clear holes. Ideal for drilling holes for setting anchor bolts. Painted hi-visibility yellow.

FEATURES

- T-Handle with large on/off trigger for precise control
- Stainless Steel spools and fasteners
- Forward-Reverse with adjustable bit rotation speed
- Feathering on/off valve allows easy start and control
- Uses 736 Skil fluted carbide tipped drill bits - requires no water/air to clear holes
- Drills 3/4" to 2" diameter holes up to 29" deep and core drills up to 4" in diameter

- Operates in any position
- Trouble free drill steel latch retainer

SPECIFICATIONS

Application: The Stanley Hydraulic HD45 Hammer Drill is a heavy duty underwater model designed for drilling in concrete, rock and masonry.

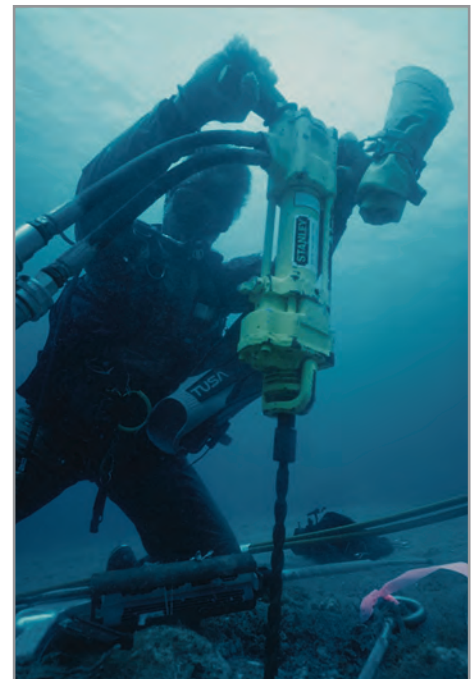
- Capacity:** #736 Skil Hex
- Hyd. Flow:** 7-9 gpm / 26-34 lpm
- Weight:** 49 lbs / 22.2 kg
- Length:** 24-1/2 in. / 62.2 cm
- Width:** 14 in. / 35 cm
- Hose Whips:** 3/8 in. / 0.9 cm flush face

HAMMER DRILL

Model	Part No.	Weight	Length	Width	Flow Range	Working Pressure	Full Relief Setting	Performance	Capacity
HD45	HD4531001	49 lbs / 22.2 kg	24-1/2 in. / 62.2 cm	14 in. / 35 cm	7-9 gpm / 26-34 lpm	1500-2000 psi / 105-140 bar	2250 psi / 155 bar	300 rpm	#736 Skil Hex

HAMMER DRILL ACCESSORIES

Model	Part No.	Description
HD45	03971	Flush Face Coupling Set, 3/8 in. NPT
	03974	Flush Face Coupling Set, 1/2 in. NPT
	31848	Dual Hose, 50 ft. x 1/2 in., with Couplers
	31972	Dual Hose, 25 ft. x 1/2 in., with Couplers
	58633	Twinned Hose, 25 ft. x 1/2 in. with Couplers
	58634	Twinned Hose, 50 ft. x 1/2 in. with Couplers
	27902	Percussion Core Bit 2-1/2 in. dia. x 6 in. OAL
	27904	Percussion Core Bit 3 in. dia. x 6 in. OAL
	30279	HD45 (Skil 736) Adapter (required)
Carbide Bits		
HD45	02280	3/4 x 24 in.
	02281	1 x 24 in.
	02282	1-1/4 x 24 in.
	02283	2 x 24 in.
	04668	1 x 18 in.
	04896	1-1/4 x 36 in.
	05163	7/8 x 24 in.
	05167	1-1/2 x 24 in.



IMPACT DRILL

MODEL ID07

The Stanley ID07 Impact/Drill is two hydraulic underwater tools in one - an impact wrench and a wood drill. The 1/2" square drive impact wrench delivers torque up to 500 ft lbs and can tighten and loosen nuts and bolts and drive lag screws. Use the ID07 with the 05079 Adapter and wood boring bits for drilling in timbers up to 1 1/16" diameter holes with no reactive torque to the diver. Trigger guard and hi-visibility yellow paint is standard.



SPECIFICATIONS

- Application:** Nut and bolt tightening or loosening.
- Capacity:** 1/2 in. / 12.7 mm Square Drive
- Performance:** Torque 500 ft lbs / 675 Nm
- Hyd. Flow:** 4-12 gpm / 15-45 lpm
- Working Pressure:** 750-2000 psi / 50-140 bar
- Weight:** 7.2 lbs / 3.3 kg
- Length:** 10 in. / 25.4 cm
- Width:** 4-1/4 in. / 10.8 cm
- Connection:** 3/8 in. flush face quick disconnect couplers. Whips and couplers included.

FEATURES

- Stainless Steel spools and fasteners
- Integral Stanley Hyrevz gear motor produces high torque
- Forward-Reverse with variable speed
- 500 ft lbs/675 Nm of impact torque
- Oversized trigger with guard for operator comfort
- Wiper seals on reversing and trigger spool
- Built in reverse check valve ensures long seal life
- Plastisol handle for comfortable ergonomic grip
- Forward position of handle provides better balance
- Open Center/Closed Center-Dual Spool Feature
- Cast-in lifting eye

IMPACT DRILL

Model	Part No.	Weight	Length	Width	Flow Range	Working Pressure	Full Relief Setting	Torque	Capacity
ID07	ID0792001	7.2 lbs / 3.3 kg	10 in. / 25.4 cm	4-1/4 in. / 10.8 cm	4-12 gpm / 15-45 lpm	750-2000 psi / 50-140 bar	2250 psi / 155 bar	500 ft lbs	1/2 in. Square Drive

DRILL ACCESSORIES

Model	Part No.	Description
ID07	03971	Flush Face Coupling Set, 3/8 in. NPT
	03974	Flush Face Coupling Set, 1/2 in. NPT
	31848	Dual Hose, 50 ft. x 1/2 in., with Couplers
	31972	Dual Hose, 25 ft. x 1/2 in., with Couplers
	58633	Twinned Hose, 25 ft. x 1/2 in., with Couplers
	58634	Twinned Hose, 50 ft. x 1/2 in., with Couplers
	Wood boring bits have 7/16 in. quick change, hex shank requires part number 05079 adaptor for use with underwater ID07.	
	05079	Chuck Adapter, 1/2 in. sq. x 7/16 in. hex QC
	05080	1/2 in. sqr Male x 5/8 in. Female Quick Change
	05117	Adaptor, 7/16 in. Hex Male x 1/2 in. Square Drive
	07192	Adaptor, 1/2 in. Square Drive to 5/8 in. QC
	27845	Pole Bit, 5/8 in. Hex Shank, 9/16 x 8 x 22 in.
	27847	Pole Bit, 5/8 in. Hex Shank, 13/16 x 8 x 22 in.

Model	Part No.	Description
ID07	27850	9/16 x 8 x 12, 7/16 in. Hex
	27851	11/16 x 8 x 12, 7/16 in. Hex
	27852	13/16 x 8 x 12, 7/16 in. Hex
	27853	15/16 x 8 x 12, 7/16 in. Hex
	27854	1-1/16 x 8 x 12, 7/16 in. Hex
	27855	9/16 x 12 x 16, 7/16 in. Hex
	27856	11/16 x 12 x 16, 7/16 in. Hex
	27857	13/16 x 12 x 16, 7/16 in. Hex
	27858	15/16 x 12 x 16, 7/16 in. Hex
	27859	1-1/16 x 12 x 16, 7/16 in. Hex
	27860	9/16 x 18 x 22, 7/16 in. Hex
	27861	11/16 x 18 x 22, 7/16 in. Hex
	27862	13/16 x 18 x 22, 7/16 in. Hex
	27863	15/16 x 18 x 22, 7/16 in. Hex
	27864	1-1/16 x 18 x 22, 7/16 in. Hex

IMPACT WRENCH

MODEL IW12



SPECIFICATIONS

Application: Underwater nut and bolt tightening or loosening, anchor bolt driving and drilling.

Capacity: 3/4 in. Square Drive / 19 mm

Hyd. Flow: 4-12 gpm / 15-45 lpm

Weight: 14 lbs / 6.4 kg

Length: 9.5 in. / 24 cm

Width: 4 in. / 10 cm

Connection: 3/8 in. flush face quick disconnect couplers

The Stanley IW12 is a medium duty 3/4" square drive impact wrench designed for underwater bolting and drilling applications. Powered by a Stanley integral Hyrevz motor, the IW12 has a durable swing hammer impact mechanism with adjustable impact intensity from 250 to 1200 ft lbs (340 to 1632 Nm) of torque. Designed to run from a wide range of hydraulic circuits, this

wrench allows underwater bolting in the most extreme applications. Trigger guard and hi-visibility yellow paint is standard.

FEATURES

- Integral Stanley Hyrevz gear motor produces high torque
- Stainless Steel spools and fasteners
- Forward-Reverse with variable speed
- Pistol grip style handle
- Adjustable impact intensity
- 1200 ft lbs/1632 Nm of maximum impact torque
- Oversized trigger with guard for operator comfort
- Plastisol handle for comfortable ergonomic grip
- Durable swing hammer mechanism
- Cast-in lifting eye

SPECIFICATIONS

Application: Nut and bolt tightening or loosening, anchor bolt driving

Capacity: 1 in. Square Drive

Hyd. Flow: 7-12 gpm / 26-45 lpm

Weight: 26 lbs / 12 kg

Length: 14.5 in. / 37 cm

Width: 4.5 in. / 11 cm

Connection: 3/8 in. flush face quick disconnect couplers

The Stanley IW16 is a heavy duty 1" square drive impact wrench designed for the toughest underwater bolting applications. Powered by a Stanley integral Hyrevz motor, the IW16 has a durable swing hammer impact mechanism with adjustable impact intensity from 500 to 2500 ft

lbs (680 to 3400 Nm) of torque. Designed to run from a wide range of hydraulic circuits. "D" style grip handle with multi-position assist handle and hi-visibility yellow paint is standard.

FEATURES

- Integral Stanley Hyrevz gear motor produces high torque
- Stainless Steel spools and fasteners
- Forward-Reverse with variable speed
- "D" style grip handle with inside trigger
- Feathering on/off trigger for precise control
- Adjustable impact intensity
- 2500 ft lbs/3400 Nm of maximum impact torque
- Durable swing hammer mechanism
- Cast-in lifting eye

IMPACT WRENCH

MODEL IW16



IMPACT WRENCH

MODEL IW24

SPECIFICATIONS

Application: Nut and bolt tightening or loosening, anchor bolt driving

Capacity: 1-1/2 in. Square Drive

Hyd. Flow: 7-12 gpm / 26-45 lpm

Weight: 43 lbs / 19.5 kg

Length: 15-1/2 in. / 41 cm

Width: 5.1 in. / 13 cm

Connection: 3/8" Male Pipe Adapter

The Stanley IW24 is an extreme duty 1 1/2" square drive impact wrench designed for the toughest underwater bolting applications. Powered by a Stanley integral Hyrevz motor, the IW24 has a durable swing hammer impact mechanism with adjustable impact intensity from 800 to 3500 ft lbs (1088 to 4760 Nm) of torque. Designed to run from a wide range of hydraulic circuits, this wrench allows underwater bolting with the best in the most extreme applications. "D" style grip handle with side assist handle and hi-visibility yellow paint is standard.

FEATURES

- Integral Stanley Hyrevz gear motor produces high torque
- Stainless Steel spools and fasteners
- Forward-Reverse with variable speed
- "D" style grip handle with inside trigger
- Feathering on/off trigger for precise control
- Adjustable impact intensity
- 3500 ft lbs/4760 Nm of maximum impact torque
- Durable swing hammer mechanism
- Cast-in lifting eye



IMPACT WRENCHES

Model	Part No.	Weight	Length	Width	Flow Range	Working Pressure	Full Relief Setting	Torque	Capacity
IW12	IW1234001	14 lbs / 6.4 kg	9 in. / 24 cm	4 in. / 10 cm	4-12 gpm / 15-45 lpm	1000-2000 psi / 70-140 bar	2250 psi / 155 bar	250-1200 ft lbs / 340-1632 Nm	3/4 in. Square Drive
IW16	IW16350	26 lbs / 12 kg	14 in. / 37 cm	5 in. / 11 cm	7-12gpm / 26-45 lpm	1500-2000 psi / 105-140 bar	2250 psi / 155 bar	500-2500 ft lbs / 680-3400 Nm	1 in. Square Drive
IW24	IW24360	43 lbs / 19.5 kg	15-1/2 in. / 41 cm	5.1 in. / 13 cm	7-12 gpm / 26-45 lpm	1800-2000 psi / 124-140 bar	2250 psi / 155 bar	800 -3500 ft lbs / 1088-4760 Nm	1-1/2 in. Square Drive

IMPACT WRENCH ACCESSORIES

Model	Part No.	Description
IW12	01857	3/4 in. Square Anvil to 3/4 in. Jacobs Chuck
	05117	7/16 in. Hex Shank x 1/2 in. Square male Adapter
	05080	5/8 in. Square Anvil to 5/8 in. Hex Quick Change Adapter
	06790	4/4 in. Square Anvil to 5/8 in. Hex Quick Change Adapter
IW16	31201	Adapter, 1 in. to 3/4 in. Drive
	31203	Extension, 10 in., 1 in. Drive
	33276	Socket Retainer Pin, 1 in. Square Drive Socket
	33277	Socket Retainer Ring, 1 in. Square Drive Socket

Model	Part No.	Description
IW24	03971	Flush-Face Coupling Set, 3/8" NPT
	03974	Flush-Face Coupling Set, 1/2" NPT
	06830	Hose Whip 18" long, -8 SAE x 1/2" NPT
	31848	Dual Hose, 50' x 1/2", with couplers
	31972	Dual Hose, 25' x 1/2", with couplers
	58633	Twinned Hose, 25' x 1/2", with couplers
	58634	Twinned Hose, 50' x 1/2", with couplers

CUT-OFF SAWS

MODEL C023

The C023 Cut-Off Saw is a hydraulic powered saw for dimensional cutting of metal, concrete, rock, masonry and coral. It has a high torque gear motor and 10" blade capacity for abrasive and diamond wheels with a 1" arbor. The C023 is designed for underwater operation and is painted hi-visibility yellow.



FEATURES

- Integral Stanley Hyrevz gear motor produces high torque
- Direct drive motor
- Stainless Steel spool and fasteners
- Adjustable shoe for precise cuts
- Interlocking safety trigger
- Cast aluminum handle and guard for durability
- Counter-clockwise rotation
- Wide flow range

SPECIFICATIONS

Capacity: 10 in. / 25.4 cm Wheel
Hyd. Flow: 10-15 gpm / 38-57 lpm
Working Pressure: 1500-2000 psi / 105-140 bar
Weight: 23 lbs / 10.4 kg
Length: 19-1/2 in. / 49.5 cm
Width: 11 in. / 28 cm
Max. Cutting Capacity: 5 in. / 12.7 cm
Connection: 1/2 in. Male Pipe Hose End
Hose Whips: Yes - 3/8 in. flush face quick disconnect couplers

CUT-OFF SAWS

Model	Part No.	Weight	Length	Width	Flow Range	Working Pressure	Full Relief Setting	Capacity
C023	C023341	23 lbs / 10.4 kg	19-1/2 in. / 49.5 cm	11 in. / 28 cm	10-15 gpm / 38-57 lpm	1500-2000 psi / 105-140 bar	2250 psi / 155 bar	10 in. / 25.4 cm Wheel

CUT-OFF SAW ACCESSORIES

Model	Part No.	Description
C023	03971	Flush Face Coupling Set, 3/8 in. NPT
	03974	Flush Face Coupling Set, 1/2 in. NPT
	06830	Hose Whip 18 in. Long, -8 SAE x 1/2 in. NPT
	03694	10 in. / 25.4 cm Diameter, 1 in. Arbor, Diamond Blade for Concrete
	04116	10 in. / 25.4 cm Diameter, 1 in. Abrasive Blade for Concrete
	04117	10 in. / 25.4 cm Diameter, 1 in. Abrasive Blade for Aluminum and Metal
	31848	Dual Hose, 50 ft. x 1/2 in., with Couplers
	31972	Dual Hose, 25 ft. x 1/2 in., with Couplers
	58633	Twinned Hose, 25 ft. x 1/2 in. with Couplers
	58634	Twinned Hose, 50 ft. x 1/2 in. with Couplers



DIAMOND CHAIN SAW

MODEL DS11



The DS11 Diamond Chain Saw is specifically designed to cut solid concrete underwater. Cuts square corners without over-cut and can plunge cut sea walls up to 18" thick. Two available bar lengths (15" and 18") and two different chains depending on the amount of rebar and hardness of the concrete.

A minimum of 20 PSI water pressure is required at the saw for cooling and lubrication of the bar and chain. Painted hi-visibility yellow.

FEATURES

- Direct drive motor - no chain coast when trigger is released
- Integral Stanley Hyrevz gear motor for durability and power
- Trigger activated water to bar and chain for lubrication
- Multi position trigger handle and Wall Walker reduces diver fatigue
- Heavy duty cast aluminum
- Cut steel reinforced concrete with Pinnacle chain
- Stainless Steel spool and fasteners

- Interlocking safety trigger and hand guard
- Pinnacle Chain: For Steel Reinforced, Heavy Aggregate Concrete
- Ultra Chain - For Light Wire Mesh, Soft/Green Concrete
- Order bar and chain separately – See Chart for Selection

SPECIFICATIONS

Capacity: 15 or 18 in. / 33 or 46 cm Bar

Hyd. Flow: 12 gpm / 45 lpm

Weight (Less Bar & Chain): 28 lbs / 12.7 kg

Length (With Bar and Chain): 37 or 40 in. / 99 or 101.6 cm

Width: 9 in. / 23 cm

Chain Type: Diamond Impregnated chain Segments

Circuit Type: Open Center

Couplers: 3/8 in. flush face quick disconnect couplers

Hose Whips: Yes (1/2 in. NPT male Thread)

Lubrication/Cooling: Internal Water Channels in Bar

DIAMOND SAW

Model	Part No.	Weight (Less Bar & Chain)	Length (With Bar & Chain)	Width	Flow Range	Working Pressure	Full Relief Setting	Capacity
DS11	DS115000*	28 lbs / 12.7 kg	37 or 40 in. / 99 or 101.6 cm	9 in. / 23 cm	12 gpm / 45 lpm	1000-2000 psi / 70-140 bar	2250 psi / 155 bar	15 or 18 in. / 33 or 46 cm

CHAIN SELECTION CHART

Chain	Soft Materials / Brick & Block	Natural Stone	Medium Concrete / Light Reinforcement	Hard Concrete / Heavy Reinforcement
Ultra Chain	■	■	■	
Pinnacle Chain - 37		■	■	■

DIAMOND SAW ACCESSORIES

Model	Part No.	Description
DS11	30305	Bar, 15 in., sprocket nose
	30306	Bar, 18 in., sprocket nose
	56801	Diamond Chain, 15 in., Ultra 32
	56802	Diamond Chain, 18 in., Ultra 37
	56803	Diamond Chain, 15 in., Pinnacle 32
	58632	Diamond Chain, 18 in., Pinnacle 37
	20857	Chain Repair Spinner
	20858	Chain Repair Breaker
	20859	Diamond Chain Butterfly Repair Kit

Model	Part No.	Description
DS11	06830	Hose Whip 18 in. Long, -8 SAE x 1/2 in. NPT
	31848	Dual Hose, 50 ft. x 1/2 in. with Couplers
	31972	Dual Hose, 25 ft. x 1/2 in. with Couplers
	58633	Twinned Hose, 25 ft. x 1/2 in. with Couplers
	58634	Twinned Hose, 50 ft. x 1/2 in. with Couplers
	03971	Flush Face Coupling Set, 3/8 in. NPT
	03974	Flush Face Coupling Set, 1/2 in. NPT
	DCP30101	Water Pump 12 DC - clips for Battery (GT18)
	DCP30100	Water Pump 12 VDC - Marine Plug

GRINDER

MODEL GR29



The Stanley Hydraulic GR29 Grinder is a right angle grinder ("vertical grinder") that can be used for grinding and cleaning in underwater applications with a variety of wheels, brushes and attachments. The high torque gear motor drives a standard 5/8" - 11 threaded spindle. A 9" adjustable wheel guard, two position assist handle and trigger guard are standard. Painted hi-visibility yellow.

FEATURES

- Integral Stanley Hyrevz gear motor produces high torque
- Stainless Steel spools and fasteners
- Two position assist handle for right/left hand operation
- Oversized trigger with guard for diver comfort
- Adjustable wheel guard for infinite positions
- Plastisol covered handle for comfortable ergonomic grip

- Use with grinding wheels, hull scrubbing brushes, wire and nylon brushes, barnacle busters and Desmond wheels
- 3200 rpm @ 12 gpm
- Cast-in lifting eye
- Angled couplers for ease of attaching hoses

SPECIFICATIONS

Capacity: 9 in. / 23 cm Dia. Wheel
Spindle: 5/8 in. - 11 Threaded
Circuit Type: Open Center
Hyd. Flow: 4-12 gpm / 15-45 lpm
Working Pressure: 1000-2500 psi / 70-175 bar
Full Relief Setting: 2250 psi / 155 bar
Weight: 15 lbs / 6.8 kg
Length: 11 in. / 28 cm
Width (With Guard): 10-1/4 in. / 26 cm
Connection: 3/8 in. flush face quick disconnect couplers

ORDER INFORMATION

Model	Part No.	Weight (With Guard)	Length	Width (With Guard)	Flow Range	Working Pressure	Full Relief Setting	Rotation/RPM	Wheel Capacity
GR29	GR2930101	15 lbs / 6.8 kg	11 in. / 28 cm	10-1/4 in. / 26 cm	4-12 gpm / 15-45 lpm	1000-2500 psi / 70-175 bar	2250 psi / 155 bar	CCW / 3200 @ 12 gpm / 45 lpm	9 in. / 22.8 cm

GRINDER ACCESSORIES

Model	Part No.	Description
GR29	02587	Grinding Wheel for metal, 9 in. dia. x 5/8 in., 11 thd. Arbor
	02588	Grinding Wheel for masonry, 9 in. dia. x 5/8 in., 11 thd. Arbor
	03691	Grinding Wheel, 7 in. dia. x 5/8 in., 11 thd. Arbor
	05194	Depressed Center Wheel Adapter
	03971	Flush Face Coupling Set, 3/8 in. NPT
	06830	Hose Whip 18 in. Long, -8 SAE x 1/2 in. NPT
	31848	Dual Hose, 50 ft. x 1/2 in. with Couplers
	31972	Dual Hose, 25 ft. x 1/2 in. with Couplers
	58633	Twinned Hose, 25 ft. x 1/2 in. with Couplers
	58634	Twinned Hose, 50 ft. x 1/2 in. with Couplers



STANLEY.

RAILROAD TOOLS



PROFILE GRINDER

MODEL PG10

The Stanley PG10 Profile Grinder is designed to grind a wide range of rail from 90# to 140#. Adjustable flange wheels which cannot get out of adjustment ensure grinding accuracy. Simple and safe operator controls positions the operator to maintain proper ergonomics while running the profile grinder.

SPECIFICATIONS

- Wheel Capacity:** 6 in. / 15 cm
- Arbor Size:** 5/8 in. - 11
- Optimum Flow:** 10 gpm / 38 lpm
- Hyd. Pressure:** 2000 psi / 140 bar
- Spindle Speed:** 4000 RPM
- Length:** 44 in. / 112 cm
- Width:** 20 in. / 51 cm
- Weight:** 118 lbs / 53.5 kg

FEATURES

- Upright handle for ergonomic operation.
- Adjustable flange wheels ensure grinding accuracy.
- Interlocking, full length, bail type safety trigger.
- Removable wheel guard for easy access to the grinding wheel.
- Built-in speed control.



ORDER INFORMATION

Model	Description	Included Equipment
PG1011001	Profile Grinder	Couplers, Shaft Wrench

ACCESSORIES

Part No.	Description
28597	6" Cup Grinding Stone
25060	Spark Guard



TRACK JACK

MODEL TJ12



SPECIFICATIONS

Weight: 43.5 lbs / 19.7 kg
Base Length: 6 x 11 in. / 15 x 28 cm (TJ12111S) 4.5 x 11 in. / 11.4 x 28 cm (TJ12112S)
Height (Retracted): 15 in. / 381 mm
Height (Extended): 23.5 in. / 597 mm
Stroke (Total Lift): 8.9 in. / 22.6 cm
Lifting Capacity: 10 Tons / 9,072 kg
Amount of Travel per Pump Stroke: .15 in. / 3.8 mm

FEATURES

- Narrow bridge model available.
- One piece forged base.
- Low pump handle effort.
- Lightest weight of any hydraulic jack in its class
- Heavy duty, ten tons (9,072 kg) of lifting capacity
- One piece forged base offer greater stability while jacking
- Totally self contained, powered with an integrated hand pump
- Low pump handle effort offers reduced

ORDER INFORMATION

Model	Description
TJ12111S	Integral Pump, Hydraulic Jack w/ Pump Handle
TJ12112S	Hydraulic Jack, Narrow Bridge Model

Stanley's track jacks are the best jacks available with untouchable power-to-weight ratios and impressive lifting capacity.

Stanley's powerful yet light-weight Weld Shear is the ideal tool for shearing thermite welds with a shearing force of over 20,000 lbs (89,000 Nm).

The WS10's efficient design allows welds to be sheared prior to dismantling the weld mold, decreasing the time to set up and increasing productivity.

The in-line pump handle eliminates rocking of the shear on the rail during shearing operation.

SPECIFICATIONS

Hyd. Pressure: 2000 psi / 140 bar
Flow Range: 3-10 gpm / 12-38 lpm
Shear Force: 20,000 lbs / 89,000 N
Weight: 90 lbs / 41 kg
Length: 29 & 32.5 in. / 73.7 & 82.5 cm (WS1022001A), 28 in / 71 cm (WS1032101A)
Width: 19.5 in. / 49.5 cm

FEATURES

- 10 Ton / 9 Metric Tons shearing force.
- Efficient hand pump (Hand pump model only).
- In-line handle (Hand pump model only).
- Controls placed away from shear for operator safety.
- 4 self-locking hold downs.
- Replaceable rollers.

WELD SHEAR

MODEL WS10



ORDER INFORMATION

Model	Description	Included Equipment
WS1032101A	Lightweight Weld Shear	Blades Not Included
WS1022001A	Lightweight Weld Shear - Hand Pump Model	Blades Not Included

ACCESSORIES

Item No.	Description
27948	Blade Set A (105 - 155 lb / yd [47 70 kg / M] Rail*)
27989	Blade Set B (60 - 130 lb / yd [41 - 60 kg / M] Rail*)

*Rail Type and Size Determines the Correct Blade Size

IMPACT DRILL

MODEL ID07

The ID07 Impact Drill/Wrench delivers impact torque of up to 500 ft lbs (675 Nm). It is capable of breaking loose some of the toughest bolts and nuts. The ID07 can drive wood augers into the hardest salt-cured or creosote-treated ties without reaction torque to the operator.

SPECIFICATIONS

Hydraulic Flow Range: 4-12 gpm / 15-45 lpm

Weight: 7 lbs / 3.3 kg

Length: 9 in. / 23 cm

Capacity: 7/16 in. or 1/2 in.

Max. Flow: 12 gpm / 45 lpm

Max. Pressure: 2000 psi / 140 bar

FEATURES

- Hyrevz™ gear-type motor.
- Swing-hammer mechanism.
- 7/16 in. hex quick-change chuck or 1/2 in. square drive.
- Built-in reverse flow check valve.
- Handle coating transmits less heat.



ORDER INFORMATION

Model	Description	Included Equipment
ID0781501	7/16 in. Quick Change Chuck	Couplers, Hose Whips
ID0782001	1/2 in. Quick Change Chuck	Couplers, Hose Whips

ACCESSORIES

Model	Part No.	Description
ID07	73636	Assist Handle
	05079	Chuck Adapter, 1/2 in. sq. x 7/16 in. hex QC
	05080	1/2 in. sqr Male x 5/8 in. Female Quick Change
	05117	Adaptor, 7/16 in. Hex Male x 1/2 in. Square Drive
	07192	Adaptor, 1/2 in. Square Drive to 5/8 in. QC
	27845	Pole Bit, 5/8 in. Hex Shank, 9/16 x 8 x 22 in.
	27847	Pole Bit, 5/8 in. Hex Shank, 13/16 x 8 x 22 in.
7/16 Hex Shank Pole Bits		
ID07	27850	9/16 x 8 x 12, 7/16 in. Hex
	27851	11/16 x 8 x 12, 7/16 in. Hex
	27852	13/16 x 8 x 12, 7/16 in. Hex
	27853	15/16 x 8 x 12, 7/16 in. Hex
	27854	1-1/16 x 8 x 12, 7/16 in. Hex
	27855	9/16 x 12 x 16, 7/16 in. Hex
	27856	11/16 x 12 x 16, 7/16 in. Hex
	27857	13/16 x 12 x 16, 7/16 in. Hex
	27858	15/16 x 12 x 16, 7/16 in. Hex
	27859	1-1/16 x 12 x 16, 7/16 in. Hex
	27860	9/16 x 18 x 22, 7/16 in. Hex
	27861	11/16 x 18 x 22, 7/16 in. Hex
	27862	13/16 x 18 x 22, 7/16 in. Hex
	27863	15/16 x 18 x 22, 7/16 in. Hex
27864	1-1/16 x 18 x 22, 7/16 in. Hex	
1/2 in. Sockets - Square Drive		
ID07	05109	9/16 inch Double Square 8 Point Deep Length
	05110	5/8 inch Double Square 8 Point Deep Length
	05111	11/16 inch Double Square 8 Point Deep Length
	05112	3/4 inch Double Square 8 Point Deep Length
	05113	13/16 inch Double Square 8 Point Deep Length
	05114	7/8 inch Double Square 8 Point Deep Length
	05115	15/16 inch Double Square 8 Point Deep Length
	05116	1 inch Double Square 8 Point Deep Length



RAIL DRILL

MODEL RD12

The power of the RD12 when used in conjunction with our exclusive indexable carbide tipped bits easily drills both hardened and standard rail with the same tool, providing a low cost per hole.

SPECIFICATIONS

Flow Range: 8-10 gpm / 30-38 lpm

Pressure: 2000 psi / 140 bar

Weight: 58.5 lbs / 26.5 kg

Length: 28 in. / 71.1 cm

Width: 8.5 in. / 21.6 cm

Water Capacity: 2 gallons / 7.6 liters

Feed Rate per Revolution: .013 in. / .03 mm

Bit Capacity: .Up to 1-13/16 in. diameter / 36 mm diameter

Output: 1.5 inch hole in 40 seconds / 38 mm hole in 40 seconds

FEATURES

- Lightweight aluminum construction.
- Preset integrated water flow control.
- Over-center clamp design.
- Tool rack for extra bits.
- Automatic water/coolant control valve.

ORDER INFORMATION

Model	Description	Included Equipment	Bit Capacity	Output
RD12101	Rail Drill with Water Tank	Couplers and Torx Driver - Does not include bits, indexable carbide tips, templates - please order those separately.	Up to 1-9/16 in. / 26 mm diameter	1.5 inch hole in 40 seconds / 38 mm hole in 40 seconds

Note: Rail Drills do not operate without bits, or templates.



ACCESSORIES

Part No.	Description	Part No.	Description
29471	Drill Bit 1 in.	31808	Drill Bit 22 mm
29470	Drill Bit 1-1/16 in.	29475	Drill Bit 23 mm
29469	Drill Bit 1-1/8 in.	30563	Drill Bit 24 mm
29468	Drill Bit 1-3/16 in.	31619	Drill Bit 25 mm
29467	Drill Bit 1-1/4 in.	29474	Drill Bit 28 mm
29461	Drill Bit 1-5/16 in.	31675	Drill Bit 31 mm
29465	Drill Bit 1-3/8 in.	31674	Drill Bit 125 mm
67268	Drill Bit 1-11/16 in.	31622	Drill Bit 27 mm
72652	Drill Bit 1-13/16 in.	29473	Drill Bit 30 mm
32511	Drill Bit 1-7/16 in. Trepanning	31624	Drill Bit 32 mm
32510	Drill Bit 1-1/2 in. Trepanning	29472	Drill Bit 33 mm
33331	Drill Bit 1-9/16 in. Trepanning	31647	Drill Bit 36 mm
67267	Drill Bit 1-5/8 in. Trepanning	31969	Ten Piece Carbide Insert Kit
		Templates	Contact Your Local Rep.



IMPACT WRENCH

MODEL IW12



SPECIFICATIONS

Application: Nut and bolt tightening or loosening, anchor bolt driving.
Capacity: 3/4 in. Square Drive
Hyd. Flow: 4-12 gpm / 15-45 lpm
Weight: 16.8 lbs / 7.6 kg
Length: 9.5 in. / 24 cm
Width: 4 in. / 10 cm
Connection: 3/8 in. flush face quick disconnect couplers

FEATURES

- Adjustable impact intensity, from 250 to 1200 ft. lb. / 340 to 1632 Nm
- Swing Hammer Mechanism
- Reverse-flow check valve prevents operation if the tool is plumbed backwards
- Feathering trigger
- Reversing valve for instant change over from forward to reverse
- 3/4 inch square drive
- Trigger lock

SPECIFICATIONS

Application: Nut and bolt tightening or loosening, anchor bolt driving
Capacity: 1 in. Square Drive
Hyd. Flow: 7-12 gpm / 26-45 lpm
Weight: 26 lbs / 12 kg
Length: 14.5 in. / 37 cm
Width: 4.5 in. / 11 cm
Connection: 3/8 in. flush face quick disconnect couplers

FEATURES

- Adjustable impact intensity, from 500 to 2500 ft. lb. / 680 to 3400 Nm
- Swing Hammer Mechanism
- Feathering trigger and "D" handle
- Reverse-flow check valve prevents operation if the tool is plumbed backwards
- Reversing valve for instant change over from forward to reverse
- 1 inch square drive

IMPACT WRENCH

MODEL IW16



IMPACT WRENCHES

Model	Part No.	Weight	Length	Width	Flow Range	Working Pressure	Full Relief Setting	Torque	Capacity	Misc.
IW12	IW12140AX	20 lbs / 9 kg	9 in. / 24 cm	4 in. / 10 cm	4-12 gpm / 15-45 lpm	1000-2000 psi / 70-140 bar	2250 psi / 155 bar	250-1200 ft lbs / 340-1632 Nm	3/4 in. Square Drive	Atex
	IW1214001	16.8 lbs / 7.6 kg	9 in. / 24 cm	4 in. / 10 cm	4-12 gpm / 15-45 lpm	1000-2000 psi / 70-140 bar	2250 psi / 155 bar	250-1200 ft lbs / 340-1632 Nm	3/4 in. Square Drive	
IW16	IW16150	26 lbs / 12 kg	14 in. / 37 cm	5 in. / 11 cm	7-12gpm / 26-45 lpm	1500-2000 psi / 105-140 bar	2250 psi / 155 bar	500-2500 ft lbs / 680-3400 Nm	1 in. Square Drive	
	IW16150S	26 lbs / 12 kg	14 in. / 37 cm	5 in. / 11 cm	7-12gpm / 26-45 lpm	1500-2000 psi / 105-140 bar	2250 psi / 155 bar	500-2500 ft lbs / 680-3400 Nm	1 in. Square Drive	

IMPACT WRENCH ACCESSORIES

Model	Part No.	Description
IW12	01857	3/4 in. Square Anvil to 3/4 in. Jacobs Chuck
	05117	7/16 in. Hex Shank x 1/2 in. Square male Adapter
	05080	5/8 in. Square Anvil to 5/8 in. Hex Quick Change Adapter
	06790	3/4 in. Square Anvil to 5/8 in. Hex Quick Change Adapter
	71706	Assist Handle Kit

Model	Part No.	Description
IW16	31201	Adapter, 1 in. to 3/4 in. Drive
	31203	Extension, 10 in., 1 in. Drive
	33276	Socket Retainer Pin, 1 in. Square Drive Socket
	33277	Socket Retainer Ring, 1 in. Square Drive Socket

Contact your Stanley Rep. for Sockets Part Number for IW12 and IW16.

RAIL SAW

MODEL RS25

Stanley's RS25 Rail Saw with its bell-crank style clamp design provides positive, rigid locking to all types of rail for quick and accurate set-up.

The ergonomical long saw arm is standard with the RS25 and allows the operator full use of the tool in a standing position. The indexable swivel on the clamp arm and saw, allows cutting on both sides of the rail, eliminating the need to disconnect from and re-connect to the saw clamp.

SPECIFICATIONS

Flow Range: 8-10 gpm / 30-38 lpm

Pressure: 2000 psi / 140 bar

Spindle Speed: 4000 RPM w/ 16 in. Wheel

Saw & Clamp Weight: 56 lbs / 25 kg

Saw Weight: 33 lbs / 15 kg

Length w/o Wheel: 36 in. / 92 cm

Width: 11 in. / 28 cm

Depth: 18 in. / 46 cm

FEATURES

- Bell-crank style clamp design.
- Ergonomically designed long saw arm.
- Lockable lower arm significantly reduces operator effort.
- Indexable swivel on the clamp arm.
- Tamper-proof speed control.
- Sealed bearings in arm and pivot joints.
- Cast aluminum construction.
- Integrated retractable blade position guide.



Model RS25103 Shown

ORDER INFORMATION

Model	RPM	Depth	Flow Range	Pressure	Included Equipment
RS25103	4000 (16 in. wheel)	18 in. / 46 cm	8-10 gpm / 30-38 lpm	2000 psi / 140 bar	Clamp (# 66138), Couplers and Hose Whips

ACCESSORIES

Part Number	Description
73648	Rail Saw Blade - 16 in. Stanley Abrasive Cut-Off Saw Blade
34367	Universal Bell Crank Kit
22439	Rail Saw Blade 16 in. Norton AT-36
29745	Rail Saw Blade 16 in. Norton Norzone III Fastcut



TIE TAMPER

MODEL TT46

The TT46133 Tie Tamper's spring-dampened anti-vibration handle isolates the tool's vibration which reduces operator fatigue and increases productivity.

The feathering On/Off valve allows the operator to control the output energy of the tool, providing more control and ease of handling.

The TT46133 Model has a spring-loaded bit keeper allows the bit to be backed out even when driven deeply into the ballast.

SPECIFICATIONS

- Weight:** 56 lbs / 25 kg
- Length:** 56 in. / 100.9 cm
- Width at Handles:** 17 in. / 44 cm
- Hyd. Pressure:** 2000 psi / 140 bar
- Flow Range:** 4-6 gpm / 15-22 lpm
- Max. Back Pressure:** 200 psi / 14 bar
- Blows Per Minute:** 1,500
- Standard Shank Size:** 7/8 x 2-9/16 in. / 22 x 65 mm

FEATURES

- Spring-dampened anti-vibration handle.
- Feathering On/Off valve.
- Spring-loaded bit keeper.
- 1500 blows per minute.

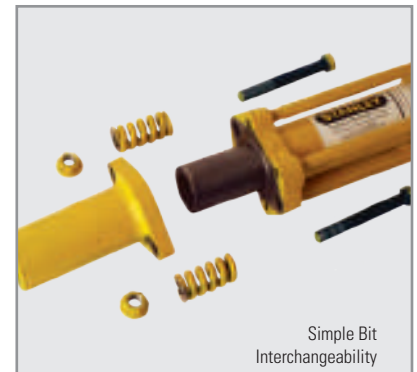


ORDER INFORMATION

Model	Description	Included Equipment
TT46133	Anti Vibration Handle Tie Tamper, Heavy Duty (5 gpm)	Couplers, Hose Whips, 21 in. Steel

ACCESSORIES

Part No.	Description
59033	Tie Tamper Steel - 4" w/"V" Cut 21" OAL - Round
59034	Tie Tamper Steel - 4" w/"V" Cut 18" OAL - Round
44937	Tie Tamper Steel - 4" w/"V" Cut 21" OAL - Hex
44979	Tie Tamper Steel - 4" w/"V" Cut 18" OAL - Hex
69397	Frost Chisel - 2" x 24"
31254	Accumulator Charging Kit



POWER UNIT

MODEL GTR20

The Hydraulic power to operate Stanley's line of hydraulic railroad tools compact design is ideal for all your on-site hydraulic power needs. The ultra efficient hydraulic tool circuit cooling provides comfortable tool operation even in the most demanding environments.

SPECIFICATIONS

Application: For use with both Type 1 or Type RR. Two 4 gpm / 15 lpm circuits or one 8 gpm / 30 lpm circuit

Weight: 330 lbs / 150 kg

Length: 35 in. / 90 cm

Width: 23 in. / 59 cm

Height: 29.5 in. / 74.9 cm

Pressure: 2000 psi / 140 bar

Fuel Tank Capacity: 5 gal. / 20 liter

Engine: 18 hp Briggs

FEATURES

- Compact and lightweight.
- Computerized electronic throttle control.
- In-tank hydraulic filtration.
- Pressurized engine oil lubrication.
- Locking handle.
- Electric Start.
- Quiet Operation.
- Small size - can fit into small truck or van.
- Portable - can be wheeled around job site like a wheelbarrow.
- Serviceability - can be serviced by small engine dealers.



GTR20

ORDER INFORMATION

Model	Part No.	Weight	Length	Width	Height	Engine	Output Flow	Pressure	Misc.
GTR20	GTR20B01	330 lbs / 150 kg	35 in. / 90 cm	23 in. / 59 cm	29 in. / 74 cm	Briggs	(2) 4 gpm / 15 lpm or (1) 8 gpm / 30 lpm	2000 psi / 140 bar	Auto Throttle

ACCESSORIES

Model	Part No.	Description
GT18/GTR20	13360	Hose Basket Conversion Kit
	33212	Weather Cover
	31848	Dual Hose, 50 ft. x 1/2 in., w/couplers (15 m x 13 mm)
	31972	Dual Hose, 20 ft. x 1/2 in., w/couplers (7.5 m x 13 mm)
	58633	Twinned Hose, 25 ft. x 1/2 in., w/couplers (7.5 m x 13 mm)
	58634	Twinned Hose, 50 ft. x 1/2 in., w/couplers (15 m x 13 mm)

ROBOTIC WELDER

MODEL RW30

The Patented RW30 Robotic Welder is a computer controlled welder. It is ideal for repairing rails or frogs. The RW30 provides consistent high quality welds.



Model RW30110 Robotic Welder Shown

SPECIFICATIONS (RW30110)

- Weld Zone Length:** 15.75 in. / 40 cm
- Weld Zone Width:** 13.75 in. / 34.9 cm
- Weld Speed (Estimated):** 5.0 in./minute / 32 cm/minute
- Weld Travel Speed:** 7.8 to 15.7 in./minute / 19.8 to 39.8 cm/minute
- Weight:** 65 lbs / 29.5 kg
- Length (Less Handles):** 25.6 in. / 650 mm
- Width:** 29 in. / 740 mm
- Height:** 16 in. / 400 mm
- Input Power Required:** 115-230 V / 50-60 Hz

FEATURES

- Eliminates operator exposure to weld fumes.
- Records all welding events into memory for later download to PC.
- Memory adapter, PC adapter, and software available as an option.
- Automated control provides consistent welds.
- Weld bead, patterns, and dimensions all electronically controlled.
- Automatic call-up from memory.
- Rugged lightweight construction.



ORDERING INFORMATION

Model	Description	Included Equipment
RW30110	Robotic Welder, 400 mm Travel, No Wire Feed	Frog Clamps, Stick Out Gauge, Computer Control
RW30112	Robotic Welder, 400 mm Travel, No Wire Feed	Above with Heater for cold weather operation
RW30120	Robotic Welder, 1000 mm Travel, No Wire Feed	Frog Clamps, Stick Out Gauge, Computer Control

INCLUDED WITH ALL MODELS

Computer Control



Stick-out Gauge

ACCESSORIES

Part No.	Description
62328	Carbon Frog Inserts
66544	Right Self Alignment Clamp
66545	Left Self Alignment Clamp
69889	Charlie Main Board

Part No.	Description
69837	Pull Gun
69823	Roll 'un Roll
70716	Cold Weather Update Kit
WF10112	Wire Feeder

HOSE TYPES

The rated working pressure of the hydraulic hose must be equal to or higher than the relief valve setting on the hydraulic system. There are three types of hydraulic hose that meet this requirement and are authorized for use with Stanley Hydraulic Tools. They are:

- Certified non-conductive - constructed of thermoplastic or synthetic rubber inner tube, synthetic fiber braid reinforcement, and weather resistant thermoplastic or synthetic rubber cover. Hose labeled certified non-conductive is the only hose authorized for use near electrical conductors.
- Wire-braided (conductive) - constructed of synthetic rubber inner tube, single or double wire braid reinforcement, and weather resistant synthetic rubber cover. This hose is conductive and must never be used near electrical conductors.
- Fabric-braided (not certified or labeled non-conductive) - constructed of thermoplastic or synthetic rubber inner tube, synthetic fiber braid reinforcement, and weather resistant thermoplastic or synthetic rubber cover. This hose is not certified non-conductive and must never be used near electrical conductors.

TOOL TO CIRCUIT HOSE RECOMMENDATIONS

Oil Flow		Each Hose Length		Inside Diameter		USE	Wire Braid Hose Spec	Working Pressure		Fiber Braid Hose Spec	Operating Pressure	
GPM	LPM	FEET	METERS	INCH	MM			PSI	BAR		PSI	BAR
5-8	19-30	up to 50	up to 15	1/2	13	Both	SAE 100R17-8	3000	230	SAE 100R7-8	2000	140
5-8	19-30	51-100	15-30	5/8	16	Both	SAE 100R17-10	3000	230	SAE 100R8-10	2750	190
5-8	19-30	100-300	30-90	5/8	16	Pressure	SAE 100R2-10	2750	190	SAE 100R8-10	2750	190
				3/4	19	Return	SAE 100R1-12	1250	86	SAE 100R7-12	1250	86

NOTE: SAE 100R16 may be used in place of SAE 100R2

RECOMMENDED HOSE CONFIGURATIONS

When a longer hose configuration is used by connecting hoses together, system back pressure is increased. Too high a back pressure may reduce performance and life of the tool. Stanley recommends back pressure not to exceed 250 psi / 17 bar. In addition, oil temperature should be limited to 140 degrees F / 60 degrees C.

For both 5 and 8 gpm (20 - 30 lpm) tools, standard hose with a 1/2" inside diameter is acceptable to use up to 100' or 30 m when configured with **(2) sets of 50 feet hose.**

Stanley **does not** recommend the following configurations with 1/2" diameter hose.

- (4) sets of 25' hose
- (1) set of 50' hose + (2) sets of 25' hose

These configuration will drive back pressure beyond recommended levels. For longer lengths between 100' to 300' Stanley recommends increasing the hose diameters to the following:

Pressure Line - 5/8" Inside Diameter Hose

Return Line - 3/4" Inside Diameter Hose

The increased hose diameter will alleviate back pressure and allow proper tool operation.

PERFORMANCE NOTES

When operating with longer hose lengths with the same diameter hose, back pressure increases. When operating hydraulic tools at 100' with the 1/2" diameter hose, some decrease in performance is possible.

This should not noticeably affect overall performance of the tool, but note it is not under optimal conditions with longer hose configurations.



Hydraulic systems come in many forms—from those found in the simple hydraulic jack to the more sophisticated systems found in earth moving equipment. The system required to operate most hydraulic tools found in this catalog would require 8 gpm / 30 lpm and be capable of providing system pressure up to 2000 psi / 140 bar. This system is referred to as a Type II, as classified by the Hydraulic Tool Manufacturers Association (HTMA). But there are also 3 other classifications. They are discussed below.

HYDRAULIC TOOL MANUFACTURERS' ASSOCIATION (HTMA) REQUIREMENTS

Hydraulic tools fall into 4 classifications, Type I, Type II, Type III, and Type RR as set by HTMA. The system requirements for powering these tools are as follows:

Type I	5	gpm ±10% / 19 lpm
Type II	8	gpm ±10% / 30 lpm
Type III	12	gpm ±10% / 45 lpm
Type RR	10	gpm ±10% / 38 lpm

OPERATING PRESSURE:

Hydraulic systems should be capable of providing the appropriate operating pressure and flow for the system types noted above when measured across the tool connections. Deviation from the nominal flow rates should be no more than plus or minus 10% at a operating pressure of 2000 psi / 138 bar. This is the pressure that the tools will normally operate at which is not to be confused with the relief pressure.

RELIEF PRESSURE:

Hydraulic systems should be capable of limiting the maximum pressure by using either a pressure compensating pump or a relief valve with a non-pressure compensating pump. The system pressure limiting component shall begin to control the maximum pressure at no less than 2150 psi. This is commonly known as the "cracking pressure". The system pressure limiting component shall limit the maximum pressure to 2250 psi for a Type I, Type II, or Type III tool. The system pressure limiting component shall limit the maximum pressure to 2500 psi for a Type RR tool.

RETURN PRESSURE:

The hydraulic systems should generate no more than 250 psi / 17 bar return pressure (back pressure) at the tool when operating at maximum flow for the tool type. System conditions for this pressure are at maximum hydraulic fluid viscosity of 400 SUS (SSU) at minimum operating temperature.

COOLING:

The hydraulic systems should have sufficient heat rejection capacity to limit maximum oil temperature to 140° F / 60° C at the maximum expected ambient temperature. Recommended minimum cooling capacities to dissipate tool-generated heat are:

Type I	3 Horsepower / 2.24 kW
Type II	5 Horsepower / 3.73 kW
Type III	7 Horsepower / 5.22 kW
Type RR	6 Horsepower / 5.22 kW

When determining cooling capacity, the intended duty cycle and the system generated heat must both be considered.

FILTRATION:

Systems should have 25 micron nominal filtration for the hydraulic fluid. Recommended filter element size is at least three times system rated flow to prevent filter bypass under low temperature start-up.

FLUID:

Hydraulic systems should use hydraulic fluid that has a viscosity of 130-225 SSU / 27-42 cst at 100° F / 38° C. Hydraulic fluids of petroleum base with anti wear properties and high viscosity indexes over 140 will meet recommended hydraulic fluid requirements over a wide range of operating temperatures. They should be demulsifying type to allow water to settle out of the fluid.

MORE POWER TO YOU

Stanley Hydraulic Tools makes a variety of hand held hydraulic tools for electric utilities, underwater applications, and other industries, as well as mounted breakers, compactors, grapples and shears, providing the broadest lineup of hydraulic-powered tools in the industry. Visit www.stanley-hydraulic-tools.com for a complete listing.

MOUNTED BREAKERS

Our mounted breakers feature industry leading design innovations including a patented valving system which provides unmatched performance and durability, a unique, direct-acting nitrogen chamber that results in increased impact force with the simplicity of only two moving parts and a rugged housing and powercell designed to excel in the most demanding applications. Our mounted breakers are ideal for construction, demolition and quarry applications and are backed by one of the most trusted names in the industry.



CYCLONE DROP HAMMER

The Cyclone Drop Hammer is hands down, pound for pound, the most productive tool for breaking concrete flatwork. It is extremely simple to install, use and maintain. The Cyclone can be mounted to skid steers, small excavators and rubber tire backhoe loaders. Since it sits directly on top of the material using no down pressure, the energy produced by the hammer's drop is concentrated on the material itself, causing very little shock energy to go back into the machine. This significantly reduces fatigue to the machine and the operator.



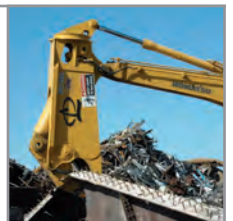
MOUNTED COMPACTORS

Stanley Mounted Compactors are available to match applications requiring 2,500 to 22,000 pounds of vibratory force. The complete line includes models to fit virtually any base machine from skid steers and mini-excavators to crawler excavators. The rugged construction of Stanley Mounted Compactors features direct drive, heavy duty gear motor and patented baseplate design with outboard rubber shock mounts to ensure longer service life.



LABOUNTY ATTACHMENTS

Stanley's LaBounty shears, grapples, & pulverizers are coveted fixtures at construction, demolition, and scrap recycling job sites throughout the world. Our attachments--some as old as the company itself--have stood atop the industry for more than 30 years and are recognized as the utmost in quality, durability, and lasting performance.



HAND HELD HYDRAULIC TOOLS

Hydraulic Hand held Tools from Stanley increase job versatility and get the job done quickly, effectively and quietly. Hydraulic power is the most efficient power of any traditional power source with the highest power-to-weight ratio of any power tool. Our hand held line of tools can be powered from a variety of hydraulic power sources such as backhoes, aerial lifts, dump trucks and Stanley Hydraulic Power Units, including our new mobile power unit – the TracHorse.



Your Authorized Stanley Dealer

STANLEY®

Infrastructure

Hydraulic Tools Product Group

Dubuis

17 Rue Jules
Berthonneau
41034 Blois, France
Tel. +33.254.52.40.00
Fax +33.254.52.40.34

Stanley Hydraulic Tools

3810 SE Naef Road
Milwaukie, OR 97267 USA
Tel. +1 503.659.5660
Fax +1 503.652.1780

www.stanleyhydraulics.com

CE HH UW RR .2016-2017