

2300 Series

0 to 10000 psig Check Valve



Features

- Designed for high pressure service
- Resilient o-ring
- Single piece design

Benefits

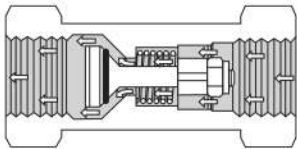
- Less susceptible to contamination damage
- Zero leakage at normal back pressure
- Automatic compensation for wear
- Cushioned, quiet closing

Technical Data

| | |
|------------------------------------|--|
| Body Construction Materials | Aluminum, brass, 303 stainless steel, or 17-4 PH stainless steel |
| O-ring Materials | Buna N, ethylene propylene, neoprene, PTFE and Viton® |
| Operating Pressure | <ul style="list-style-type: none"> • Aluminum: 0 to 5000 psig (345 bar) (for temperatures under 250° F) • Brass: 0 to 5000 psig (345 bar) • 303 stainless steel: 0 to 7500 psig (517 bar) • 17-4 PH stainless steel: 0 to 10000 psig (690 bar) |
| Proof Pressure | <ul style="list-style-type: none"> • Aluminum: 7500 psig (517 bar) • Brass: 7500 psig (517 bar) • 303 stainless steel: 11,250 psig (776 bar) • 17-4 PH stainless steel: 15000 psig (1,034 bar) |
| Rated Burst Pressure | <ul style="list-style-type: none"> • Aluminum: 12500 psig (862 bar) • Brass: 12500 psig (862 bar) • 303 stainless steel: 18,750 psig (1,293 bar) • 17-4 PH stainless steel: 25000 psig (1,724 bar) |
| Temperature Range | -100° F to +400° F (-73° C to +204° C) Based on o-ring & body material, see "How to Order" |
| Connection Sizes | 1/8" to 1" |

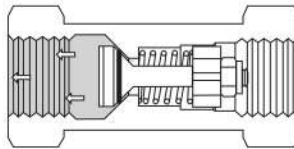
Note: Proper filtration is recommended to prevent damage to sealing surfaces.

How it Works



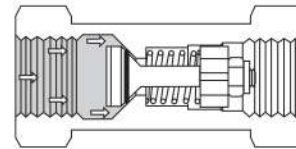
Open

Flow passes smoothly over poppet head with minimum turbulence.



Closing

O-ring automatically establishes line of contact with conical seat to cushion closing and insure perfect sealing.



Closed

O-ring only seals. Full pressure is carried by metal-to-metal seat. Increasing pressure increases sealing efficiency.

Circle Seal Controls

2301 Wardlow Circle • Corona, CA 92880
Phone (951) 270-6200 • Fax (951) 270-6201
www.circlesealcontrols.com

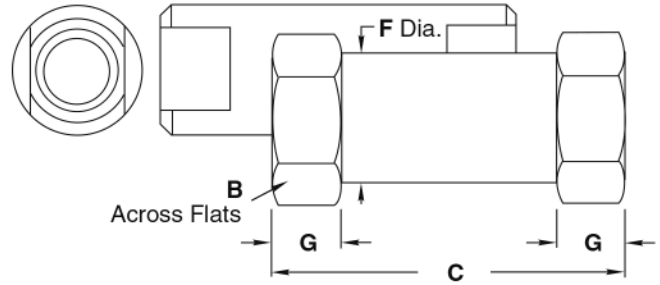
check valves

2300 Series

End Connection & Dimensions (Inches)

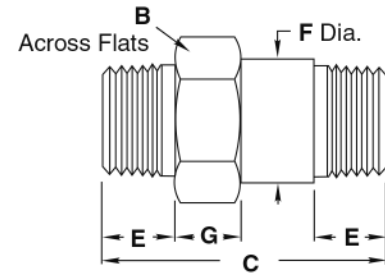
-PP: Female / Female Pipe

| Dash No. | Pipe Size | B Hex | C | F | G |
|----------|-----------|-------|------|------|------|
| -1PP | 1/8" | 0.625 | 1.50 | 0.59 | 0.31 |
| -2PP | 1/4" | 0.813 | 2.00 | 0.77 | 0.41 |
| -3PP | 3/8" | 1.000 | 2.35 | 0.95 | 0.50 |
| -4PP | 1/2" | 1.250 | 2.89 | 1.19 | 0.56 |
| -6PP | 3/4" | 1.500 | 3.30 | 1.43 | 0.69 |



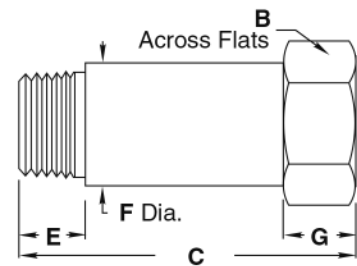
-MM: Male / Male Pipe

| Dash No. | Pipe Size | B Hex | C | E | F Dia. | G |
|----------|-----------|-------|------|------|--------|------|
| -2MM | 1/4" | 0.625 | 1.82 | 0.60 | 0.59 | 0.31 |
| -3MM | 3/8" | 0.813 | 2.21 | 0.61 | 0.77 | 0.41 |
| -4MM | 1/2" | 1.000 | 2.75 | 0.79 | 0.95 | 0.50 |
| -6MM | 3/4" | 1.250 | 3.03 | 0.80 | 1.19 | 0.56 |
| -8MM | 1" | 1.500 | 3.67 | 0.99 | 1.43 | 0.69 |



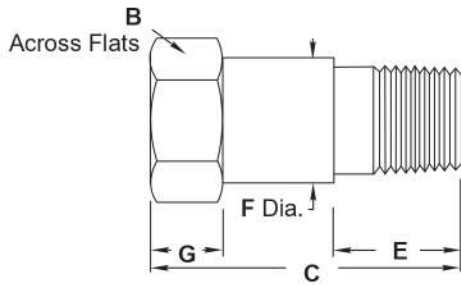
-MP: Male / Female Pipe

| Dash No. | Pipe Size | B Hex | C | E | F Dia. | G |
|----------|-----------|-------|------|------|--------|------|
| -1MP | 1/8" | 0.625 | 1.46 | 0.40 | 0.59 | 0.31 |
| -2MP | 1/4" | 0.813 | 1.67 | 0.60 | 0.77 | 0.41 |
| -3MP | 3/8" | 1.000 | 2.07 | 0.61 | 0.95 | 0.50 |
| -4MP | 1/2" | 1.250 | 2.56 | 0.79 | 1.19 | 0.56 |
| -6MP | 3/4" | 1.500 | 2.88 | 0.80 | 1.43 | 0.69 |



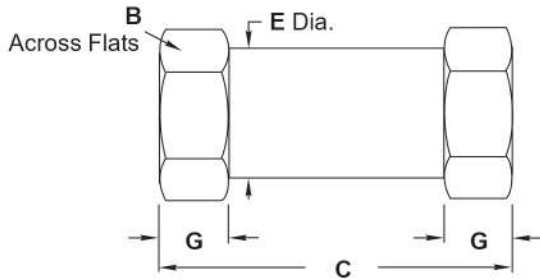
2300 Series

End Connection & Dimensions (Inches)



-PM: Female / Male Pipe

| Dash No. | Pipe Size | B Hex | C | E | F Dia. | G |
|----------|-----------|-------|------|------|--------|------|
| -2PM | 1/4" | 0.813 | 1.93 | 0.60 | 0.77 | 0.41 |
| -3PM | 3/8" | 1.000 | 2.26 | 0.61 | 0.95 | 0.50 |
| -4PM | 1/2" | 1.250 | 2.89 | 0.79 | 1.19 | 0.56 |



-BB: Female / Female Tube

| Dash No. | Tube Size | B Hex | C | E Dia. | G |
|----------|-----------|-------|------|--------|------|
| -4BB | 1/4" | 0.688 | 2.00 | 0.66 | 0.24 |
| -6BB | 3/8" | 0.813 | 2.40 | 0.77 | 0.41 |
| -8BB | 1/2" | 1.250 | 3.34 | 1.19 | 0.56 |
| -10BB | 5/8" | 1.250 | 3.53 | 1.19 | 0.56 |
| -12BB | 3/4" | 1.500 | 4.15 | 1.43 | 0.69 |

2300 Series

How to Order

23 49 R - 2 PP - 7

O-RING MATERIAL, TEMPERATURE & STANDARD CRACKING RANGE

- 62** EPDM, -65° F to +300° F, 0.5-1.5 psig
- 49** Buna N, -65° F to +250° F, 2-5 psig
- 59** Buna N, -65° F to +275° F, 0.5-1.5 psig
- 33** Neoprene, -40° F to +240° F, 2-5 psig
- 20** PTFE, -100° F to +400° F, 5 psig
- 32** Viton®, -20° F to +400° F, 0.5-1.5 psig

BODY MATERIAL

- A** 2024-T4/T351 aluminum†
- B** Brass†
- R** 17-4 PH stainless steel
- T** 303 stainless steel

CRACKING PRESSURE

Call out dash number if not standard*
7 7 psig

CONNECTIONS

- P** Female pipe, NPT
- M** Male pipe, NPT
- B** Female tube, AND10050
- S** British taper, male pipe
- X** British taper, female pipe

CONNECTION SIZE

Pipe sizes in 1/8" increments
 Tube sizes in 1/16" increments

* Standard based on seal material

† For PED applications, brass bodies are limited to a maximum temperature of +100° F (+38° C), aluminum bodies are limited to a maximum temperature of +200° F (+93° C)

Note: Vacuum service may require special lubricants.

AND10050 connections not normally recommended for 10000 psi service unless special fitting seals are used.

Please consult Circle Seal Controls or your local distributor for information on special connections, o-rings, operating pressures and temperature ranges.

Leakage

- 2362, 2332, 2359 Series zero @ 1 psig to proof
- 2333, 2349 Series zero @ 3 psig to proof
- 2320 Series zero @ 75 psig to proof

For cracking pressures less than standard, consult factory for leakage rates

Special Cracking Pressures

Valves with special springs can be furnished to order

- Minimum cracking pressure available: 0.5 psig
- Maximum cracking pressure available: 30 psig

When ordering a cracking pressure less than the maximum indicated for a specific o-ring, indicate the exact maximum cracking pressure in the part number (i.e. 2349R-2PP-3). If higher cracking pressure than the maximum shown is desired, cracking pressure tolerance is ±20%.

Flow Rates

| Valve size | Tube | -4BB | -6BB | — | -8BB, -10BB | -12BB |
|---------------------|------|------|------|------|-------------|-------|
| | Pipe | -1PP | -2PP | -3PP | -4PP | -6PP |
| Cv (Maximum) | | 0.31 | 0.76 | 1.78 | 2.82 | 5.11 |

For Your Safety

It is solely the responsibility of the system designer and user to select products suitable for their specific application requirements and to ensure proper installation, operation, and maintenance of these products. Material compatibility, product ratings and application details should be considered in the selection. Improper selection or use of products described herein can cause personal injury or property damage.

Viton® is a registered trademark of DuPont Dow Elastomers.