

Instructions for Updating the Cygnus DIVE Firmware.

Issue 3, June 2022

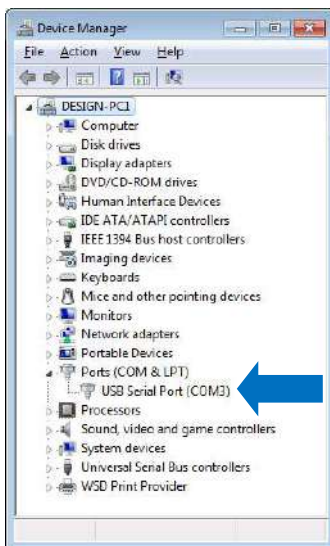
The firmware on the Mk2 and Mk3 Cygnus DIVE gauge can be updated by a software tool called “M2-DIVE Firmware Updater” which is available on request from Cygnus Instruments Ltd.

All that is required to update a DIVE gauge is;

1. A Windows computer
2. A DIVELink USB Lead (connects the DIVE Gauge to a USB port)
3. A DIVE Battery with >50% charge
4. The new Firmware file from Cygnus (this is a ‘.hex’ file)
5. ‘DIVE Firmware Updater’ program installed on the Windows computer

Instructions

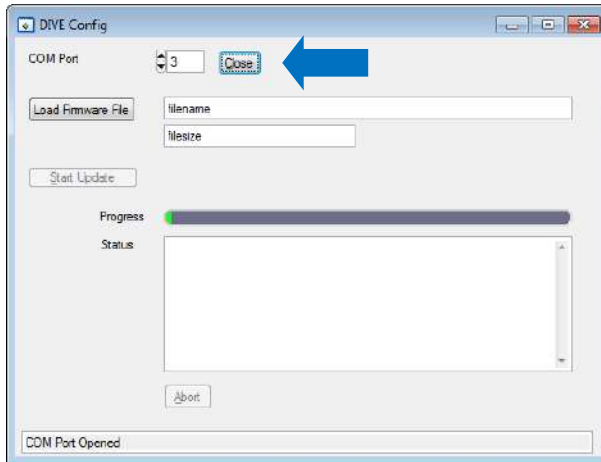
1. Remove the battery from the DIVE gauge so it is completely turned off.
2. Check you have the new DIVE firmware HEX file – emailed from Cygnus
3. Install the “DIVE Firmware Updater” program if not already
4. Connect the DIVE gauge to the computer using the USB link lead
5. You need to find the COM PORT number assigned to the DiveLink USB Lead. Press the Windows key, then type “Device Manager” to locate the start icon, then click it to start Device Manager, look for “Ports (COM and LPT)” and expand this section to locate the USB Serial Port, its port number is shown in brackets, in the example below its “COM3” so the port number is 3.



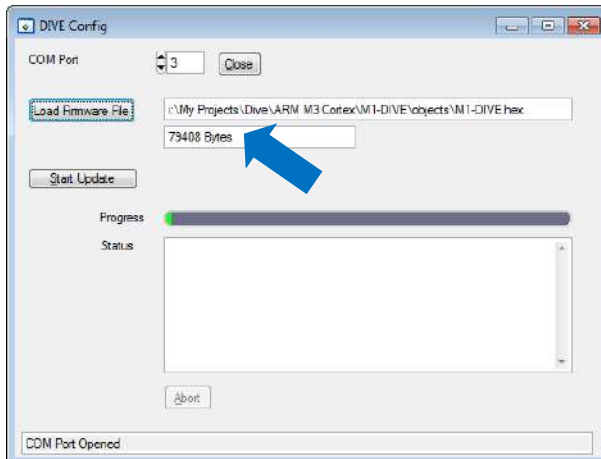
6. Start the “DIVE Firmware Updater” program
7. Set the COM Port number to match the USB Lead’s port number and click the **Open** button, the status bar at the bottom should say “COM Port Opened” if all is ok.

Instructions for Updating the Cygnus DIVE Firmware.

Issue 3, June 2022



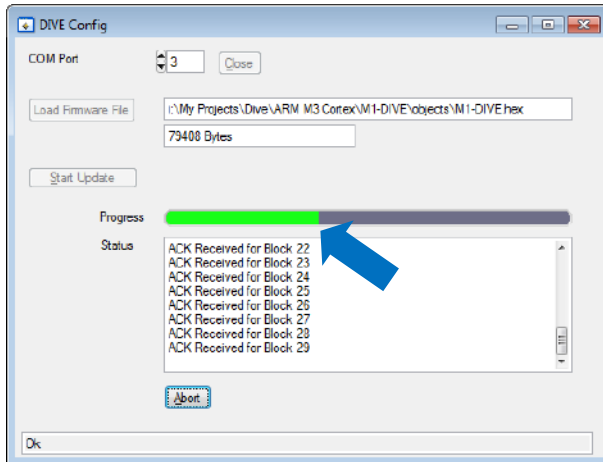
8. Click the **Load Firmware File** button and in the file select dialog locate the new DIVE firmware HEX file sent from Cygnus, then click the **Load** button. You should see a path and file size appear.



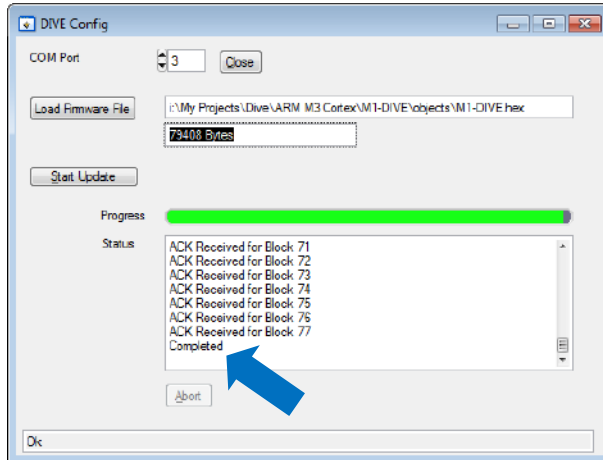
9. On the DIVE Firmware Updater program click the **Start Update** button.
10. Insert the DIVE battery to turn on the DIVE Gauge and start the firmware update process.
11. You should see the green progress bar move along the screen as the data is transmitted to the DIVE Gauge. **DO NOT INTERRUPT THIS PROCESS.**

Instructions for Updating the Cygnus DIVE Firmware.

Issue 3, June 2022



12. When the transfer has completed, the Status will show “Completed”.



13. Now you can re-start the DIVE gauge. Just remove the battery, wait a moment, then re-insert the DIVE battery. The DIVE gauge should start with the new firmware version.

14. If any of these steps fail, you can simply re-start again.