

### Instructions

## AlphaTec® EXHAUST VALVE REPLACEMENT



AlphaTec® Exhaust Valve

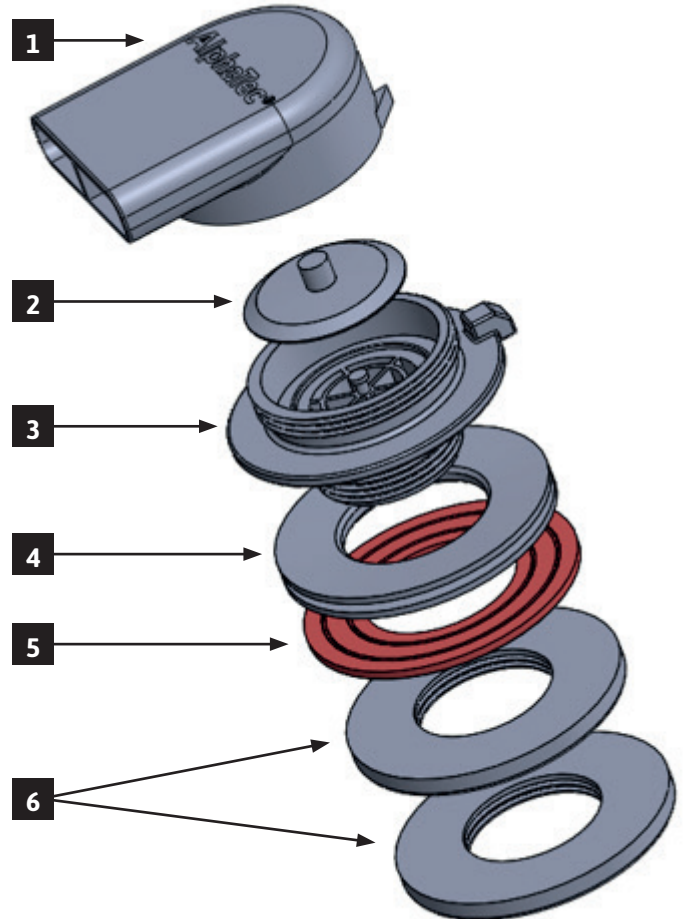
#### DESCRIPTION

AlphaTec® Exhaust Valves are fitted in all AlphaTec gas-tight suits.

#### PARTS REQUIRED

DESCRIPTION & NAME	ART NO
<b>Components:</b>	
AlphaTec Exhaust Valve, complete	K73 103 000
<b>Tools:</b>	
Hex key screw driver	Not available from Ansell
Torque driver	
3-pin tool	K77 704 040
Palette knife	K77 709 015

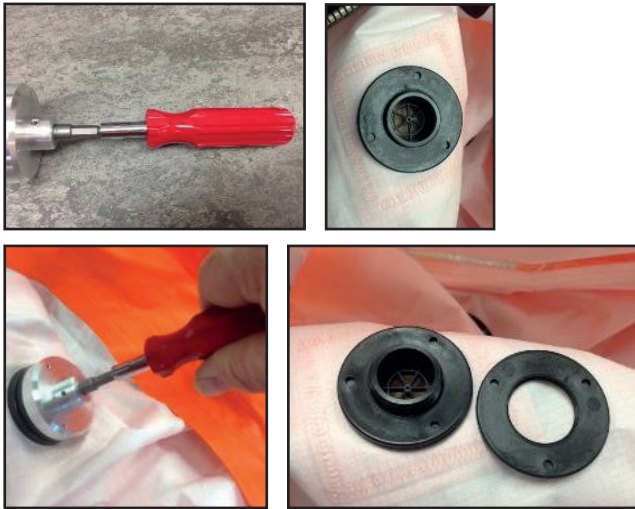
#### VALVE PARTS



- 1) Valve cover
- 2) Diaphragm
- 3) Valve seat/body
- 4) Rubber gasket
- 5) Slip washer
- 6) Retaining collar, 2 pcs

## REMOVE OLD EXHAUST VALVE

- 1) Attach the 3-pin tool to the hex key screwdriver, then position the pins into the holes of the first retaining collar. Unscrew the collar anti-clockwise.



- 2) Repeat step 1 for the second retaining collar and remove along with the slip washer.

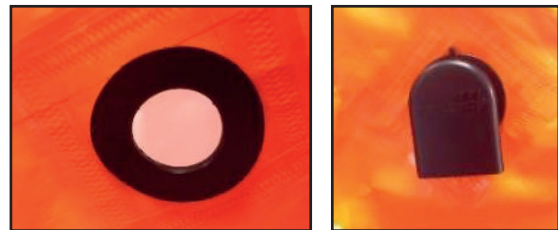


- 3) Remove the damaged exhaust valve by pulling it out of the rubber gasket, from the outside of the suit.



## INSTALL NEW EXHAUST VALVE

- 1) Remove the two retaining collars and the slip washer from the new exhaust valve.
- 2) Check that the rubber gasket is not damaged. If damaged, replace with a new.
- 3) Position the new exhaust valve into the hole of the rubber gasket and make sure that the opening of the exhaust valve is facing downwards.



- 4) Fit the slip washer and one retaining collar.

- 5) Set the torque driver to 3 Nm and fit onto the 3-pin tool. Tighten the retaining collar clockwise until the driver clicks 3 times.



- 6) Fit the second retaining collar and tighten to 3 Nm.



The suit must be pressure tested before it is used again.