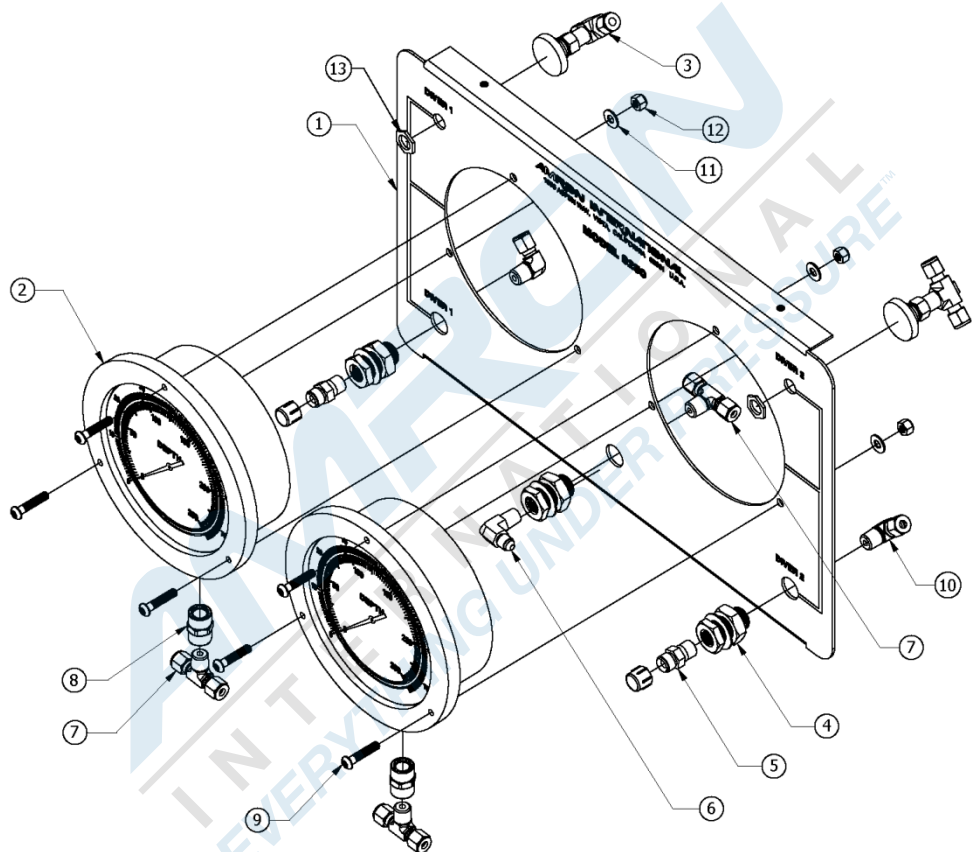


8250-200 PNEUMO PANEL

Instruction Manual
for
Amron International, Inc.

MODEL 8250 LOW PRESSURE AIR CONTROL



Ref	Part #	Description
1	345-0015-01	Pneumo Panel
2	520-0015-01 (MFG PN: 210FTM88A21)	6" Pneumo Gauge
3	NV2H-4T-S- BRAS	Needle Valve
4	207ACBHS-4	Bulkhead
5	340-0087-01	O2 Fitting
6	CTX-B-4-4	#4 JIC

7	CBTM4-4N-BRAS	Tee
8	207P-4	Coupler
9	1/4- 20X1.25HSBHC	Screws
10	CLMA4-4N-BRAS	Elbow
11	1/4FWSS	Washers
12	1/4-20NUTSSL	Nut
13	4 Panel Nut	Nut

NN-4-035 1/4" Flex Tube Not Shown

AMRON
INTERNATIONAL

1380 Aspen Way, Vista California 92081-8349
United States of America
Phone: (760) 208-6500
Fax (760) 599-3857
email: sales@amronintl.com
web: www.amronintl.com

This manual and the information contained herein are provided for use as an operation and maintenance guide. No license or rights to manufacture, reproduce, or sell either the manual or articles described herein are given. Amron International, Inc. reserves the right to change specifications without notice.

INTRODUCTION

The 8250 Low Pressure Air Control is a 2-Diver air control developed by Amron without a high pressure reducing regulator or any other high pressure components. It's intended for customers who primarily use low pressure compressors to supply air to divers. It has a max depth rating of 220 feet.

WARNING: DO NOT USE WITH ENRICHED OXYGEN MIXTURES ABOVE 25%

SPECIFICATIONS

Low Pressure Air Controls with Check Valves

Max Pressure.....	225 PSI
Inlet Connection (#10 JIC).....	2
Emergency Inlet Connection (O2 Fitting).....	1
Diver Outlet Connection, (O2 Fitting).....	2
Diver Outlet Valve (Ball).....	2
Air Pressure Gauge, 0-400 PSI.....	Accuracy +/- 1.5%
Over Pressure Relief Valve Set Pressure.....	250 PSI

Pneumo Panel

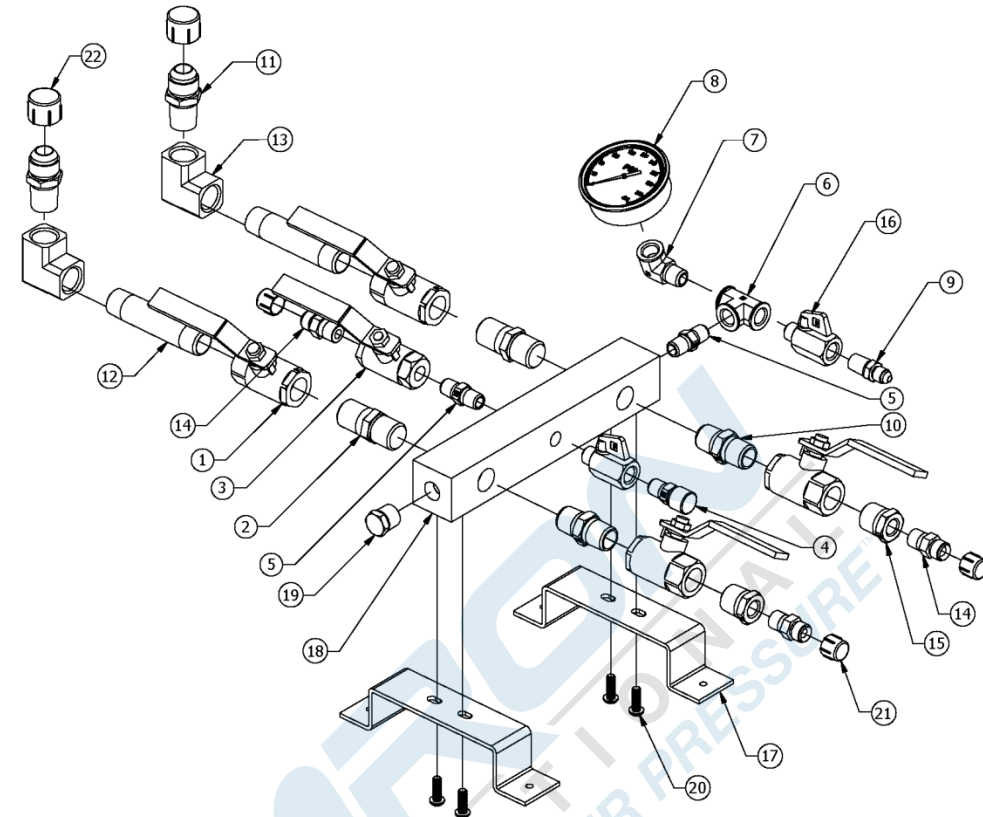
6 Inch, 3-D Precision Gauge.....	2
Range.....	Dual Scale 0-250 FSW/0-76 MSW
Divisions.....	1 Foot
Accuracy.....	0.50% of Full Scale
Regulating Valve, KEL-F Seat.....	2
Outlet Connection, O2 Fitting.....	2

Enclosure

Lid closed.....	21-3/4" W x 14-3/4" D x 9-1/4" H
Lid open.....	21-3/4" W x 18" D x 22-1/2" H
Weight:.....	Approximately 40 lbs.
Color:.....	Yellow

ASSEMBLY DRAWINGS AND PARTS LISTS

8250-400 MAIN AIR MANIFOLD



Ref	Part #	Description	Ref	Part #	Description
12	215PNL-8-35	Lg Pipe Nipple	13	2200P-8-8	Elbow
1	70-143-10	1/2" Ball Valves	14	340-0087-01	O2 Fitting
2	2259B-4MM	Check Valves	15	209P-8-4	Reducer
3	70-141-10	1/4" Ball Valve	16	MV608-4	Mini Ball Valve
4	130-2-250	Relief Valve	17	8100-003	Bracket
5	216P-4	Adapter	18	340-0027-01	Manifold
6	1203P-4	Union Tee	19	HP-B-3/8	Hex Plug
7	1202P-4-4	Street Elbow	20	1/4-20X5/8HSBHC	Screws
8	71172520400 (MFG PN: PB254B-400)	Gauge	21	N/A	Cap
9	FMC4T-02N-BRAS	#4 JIC	22	N/A	Cap
10	216P-8	Adapter			
11	FMC10T-04N-BRAS	#10 JIC			