

User Manual  
for  
Amron International, Inc.

**Model 8330-PM  
Three Diver Air Control System**



1380 Aspen Way, Vista California 92081-8349

United States of America

Phone: (760) 208-6500

Fax (760) 599-3857

Email: [sales@amronintl.com](mailto:sales@amronintl.com)

Web: [www.amronintl.com](http://www.amronintl.com)

This manual and the information contained herein are provided for use as an operation and maintenance guide. No license or rights to manufacture, reproduce, or sell either the manual or articles described herein are given. Amron International, Inc. reserves the right to change specifications without notice.

*Copyright© 2026 Amron International, Inc*



## TABLE OF CONTENTS

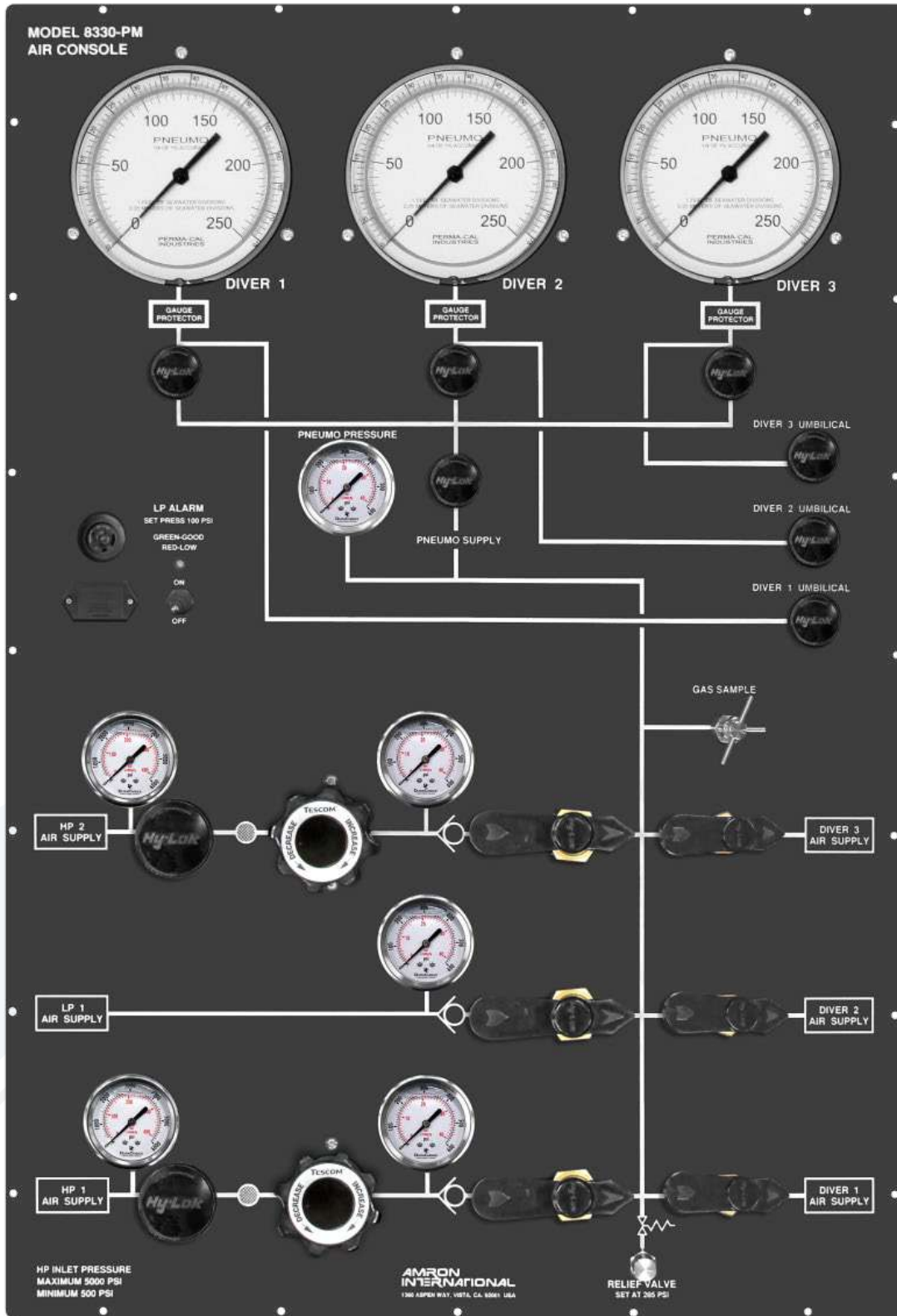
|  |           |
|--|-----------|
| <b>1.0 DRAWINGS AND SCHEMATICS</b> .....                 | <b>1</b>  |
| 1.1 Model 8330-PM (Front View).....                      | 2         |
| 1.2 Parts Locator, Model 8330-PM (Front View).....       | 3         |
| 1.3 Model 8330-PM (Rear View).....                       | 4         |
| 1.4 Parts Locator, Model 8330-PM (Rear View).....        | 5         |
| 1.5 Model 8330-PM (Panel Cut-Out & Mounting Detail)..... | 6         |
| <b>2.0 PARTS LIST</b> .....                              | <b>7</b>  |
| 2.1 MODEL 8330-PM, HP/LP AIR MANIFOLD PANEL.....         | 8         |
| <b>3.0 LIMITED WARRANTY AND SERVICE POLICY</b> .....     | <b>10</b> |

## 1.0 DRAWINGS AND SCHEMATICS

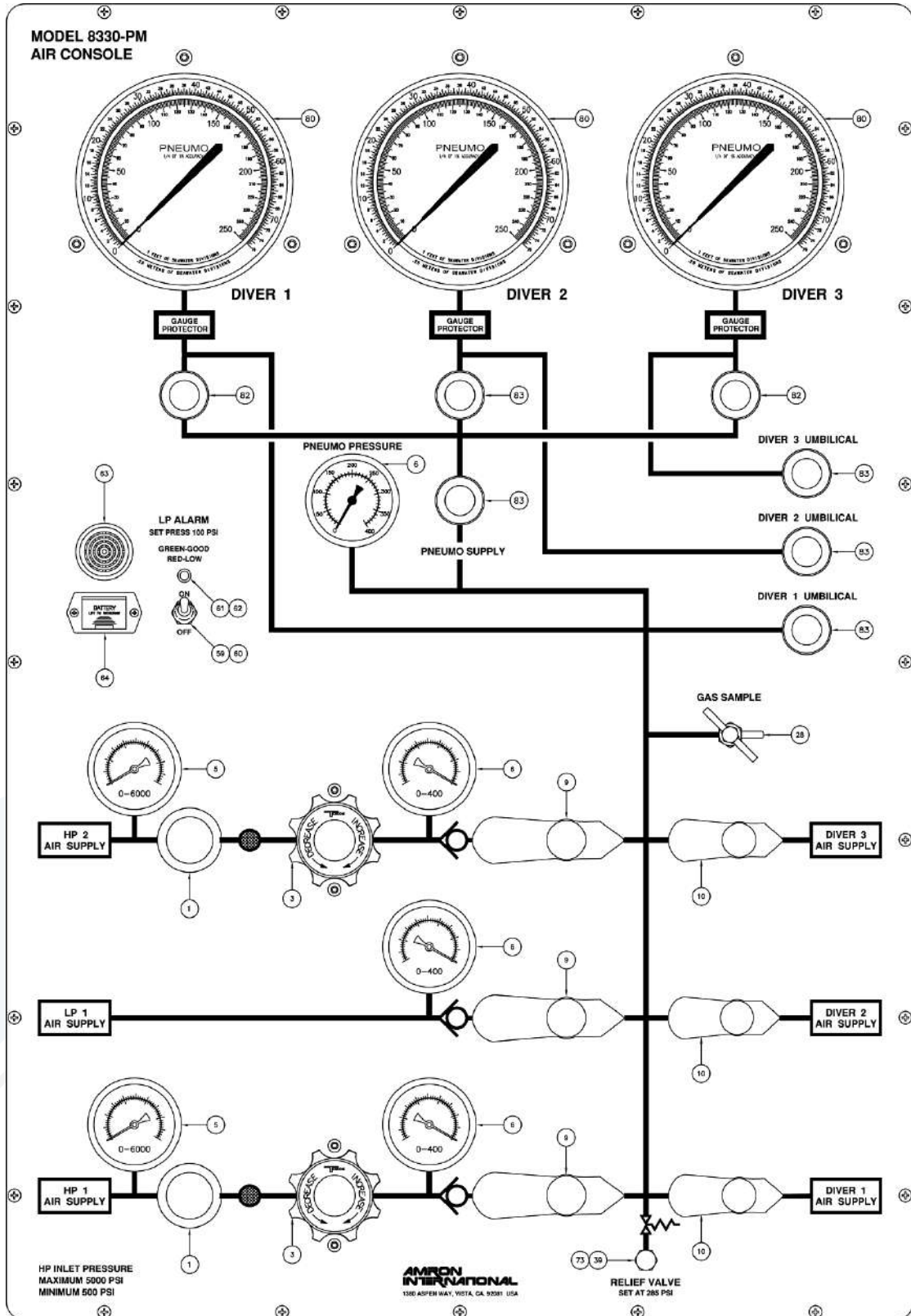
### General

The following drawings illustrate the electrical and mechanical details of the diver communication unit. The corresponding parts lists for each drawing are detailed in the parts lists section.

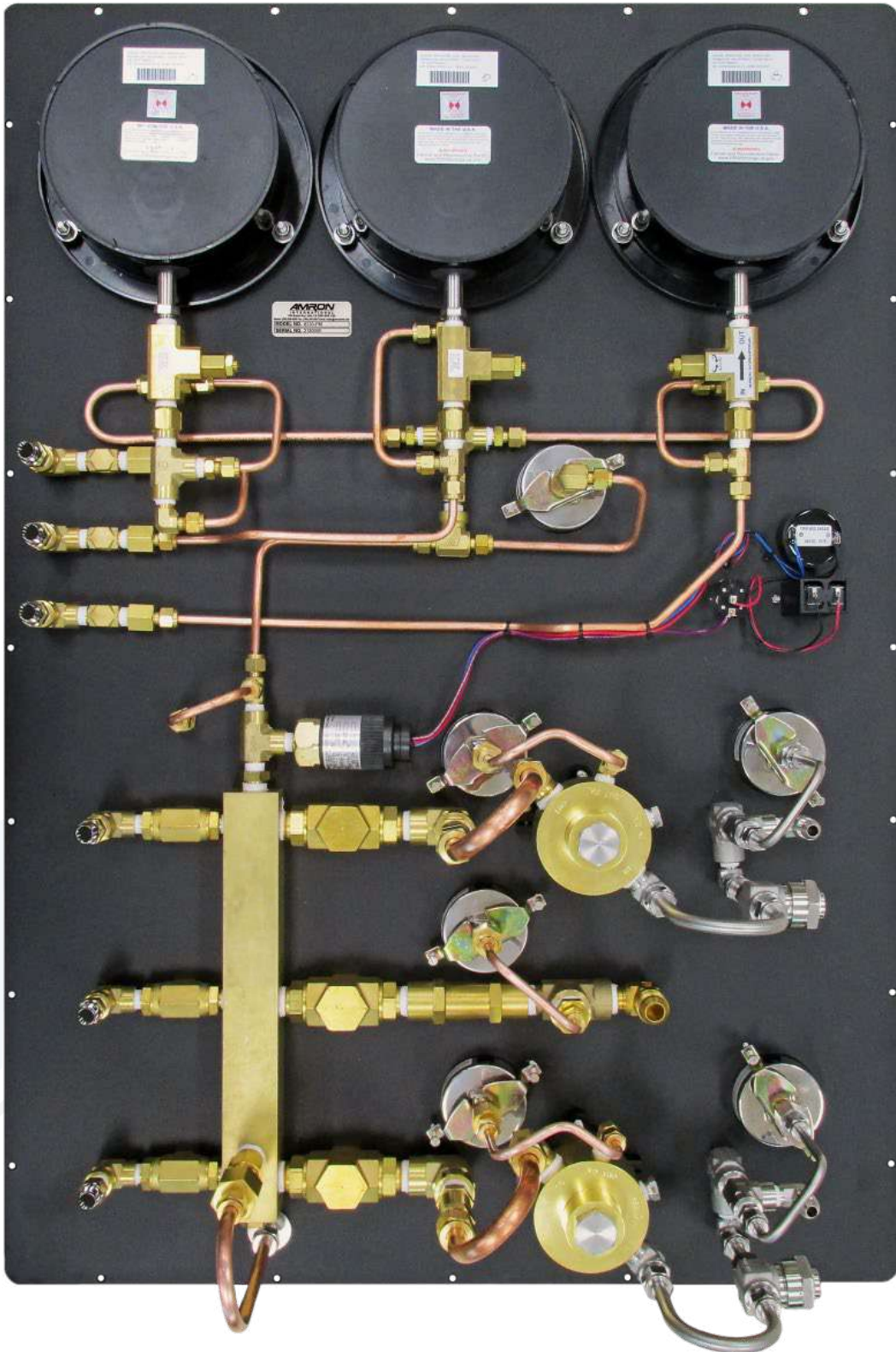
1.1 Model 8330-PM (Front View)



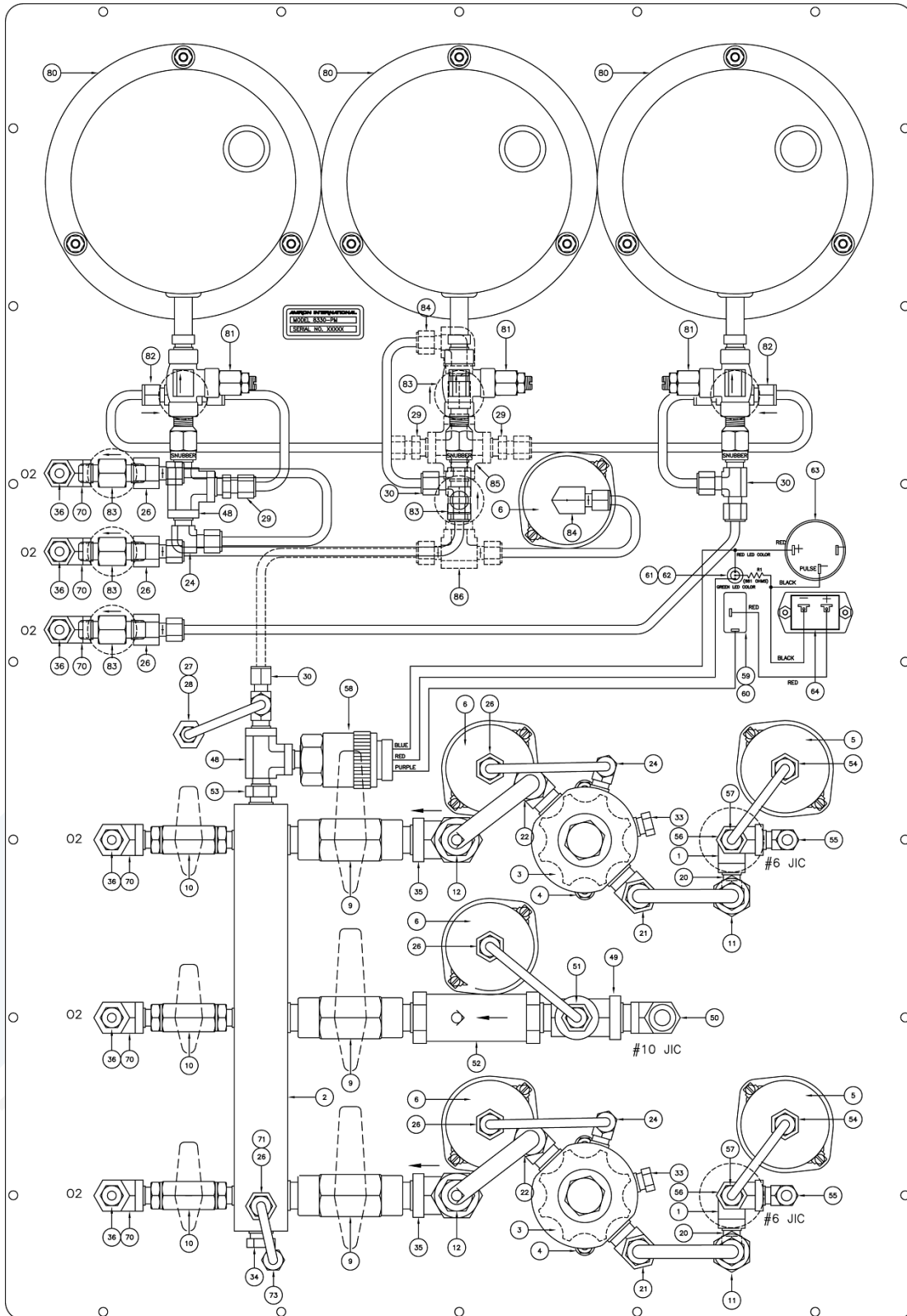
1.2 Parts Locator, Model 8330-PM (Front View)



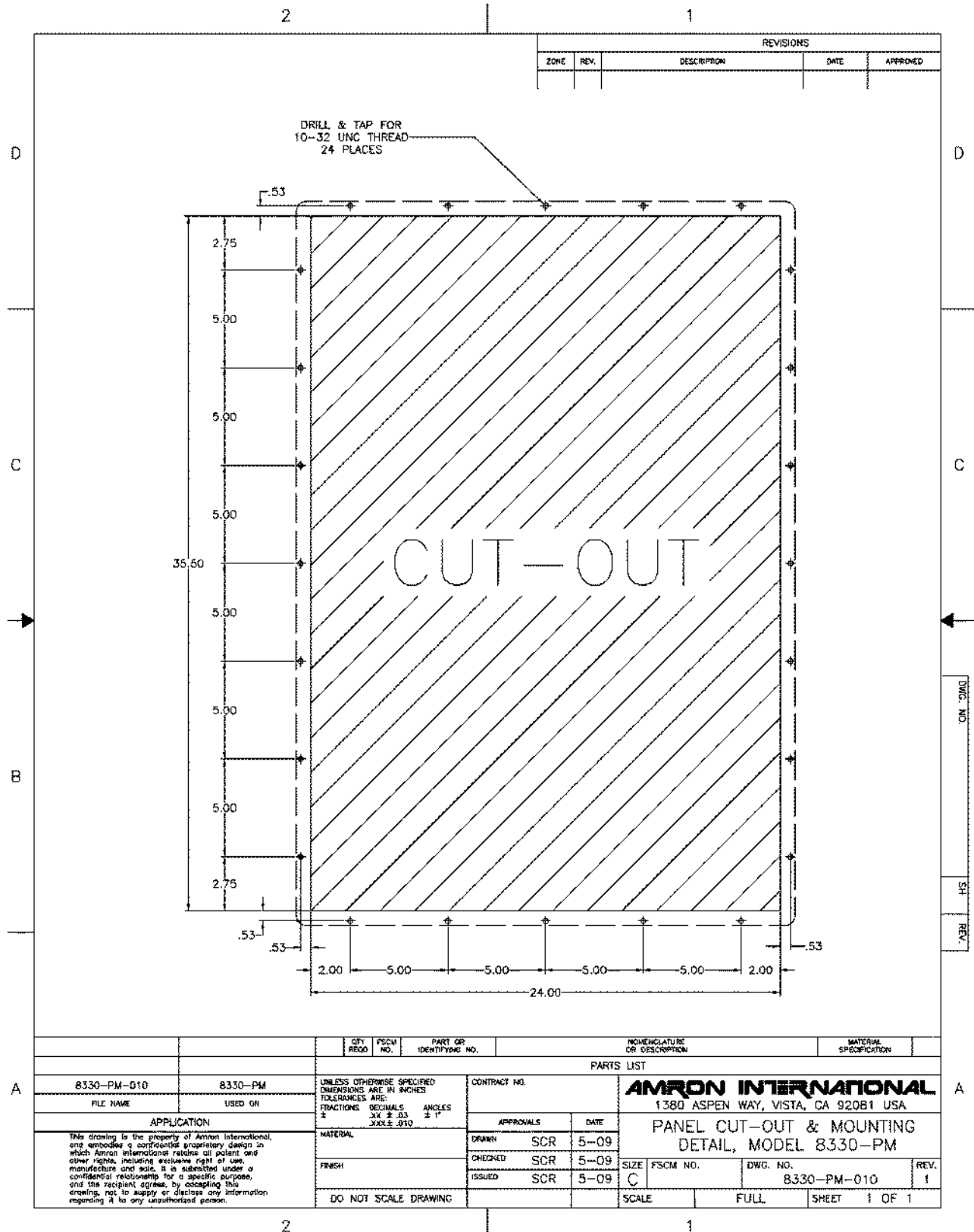
1.3 Model 8330-PM (Rear View)



1.4 Parts Locator, Model 8330-PM (Rear View)



1.5 Model 8330-PM (Panel Cut-Out & Mounting Detail)



## 2.0 PARTS LIST

The parts lists include both mechanical and electrical parts. The following information will be useful in interpreting data which is not self-explanatory.

### REVISIONS

The parts lists in this manual are for the current model of diver communicator as of the printing date.

To Order Replacement Parts Contact:

Amron international, Inc.  
1380 Aspen Way, Vista, California, 92081 U.S.A.  
Telephone: (760) 208-6500 Fax: (760) 599-3857  
Email: [sales@amronintl.com](mailto:sales@amronintl.com)  
Web: [www.amronintl.com](http://www.amronintl.com)

When ordering replacement parts, you should give as much information as possible to enable us to supply the correct part. This information should include the part number, description, reference designator, value, radio model number, and serial number. Failure to provide sufficient information may hinder our ability to fill your parts orders promptly and correctly.

**2.1 MODEL 8330-PM, HP/LP AIR MANIFOLD PANEL**

| REF | PART NO.                             | DESCRIPTION                                   |
|-----|--------------------------------------|---|
| 1   | NV3FA-4N-S-OS-S316                   | VALVE ANGLE 1/4 FNPT S/S KEL-F                |
| 2   | 8330-003                             | LP MANIFOLD BRASS 400 PSI WP                  |
| 3   | 44-1312-2081-056                     | PRESSURE REDUCING REGULATOR; BRASS; 1/2 FNPT; |
| 4   | 1129                                 | BRACKET; MOUNTING ASSY                        |
| 5   | 711725206000<br>(MFG PN: PB254B-K06) | PRESSURE GAUGE 2.5 IN 0-6000 PSI/BAR1/4 NPT   |
| 6   | 71172520600<br>(MFG PN: PB254B-600)  | PRESSURE GAUGE 2.5 IN 1/4 NPT 0-600 PSI/BAR   |
| 9   | HB3M-8N-BRAS                         | VALVE BALL BRASS 1/2 IN. MNPT                 |
| 10  | HB2M-4N-BRAS                         | VALVE BALL 3/8IN BRASS 1/4MNPT                |
| 11  | FTH-6T-50-S316                       | FILTER INLINE 50 MICRON S/S                   |
| 12  | CV3-HM-8T8N-1-BRAS                   | VALVE CHECK 1 PSI CRACKING                    |
| 20  | CLMA6-4N-S316                        | ELBOW MALE S/S NO 6X 1/4 MNPT                 |
| 21  | CLMA6-8N-S316                        | MALE ELBOW S/S 3/8 X 1/2                      |
| 22  | CLMA8-8N-BRAS                        | MALE ELBOW BRASS1/2 X 1/2                     |
| 24  | CLMA4-4N-BRAS                        | MALE ELBOW 1/4 X 1/4                          |
| 26  | CFC4-4N-BRAS                         | FEMALE CONNECTOR 1/4 IN BRASS                 |
| 27  | CBFC4-4N-BRAS                        | FEMALE CONNECTOR BULKHEAD                     |
| 28  | SS-BVM4-SH                           | VALVE, BLEED W/T-HANDLE                       |
| 29  | CMC4-4N-BRAS                         | MALE CONNECTOR 1/4 X 1/4 NPT                  |
| 30  | CRTM4-4N-BRAS                        | MALE RUN TEE 1/4                              |
| 33  | HP-SS-1/4                            | HEX HEAD PLUG; STAINLESS STEEL                |
| 34  | HP-B-3/8                             | HEX HEAD PLUG; BRASS                          |
| 35  | DD-B-1/2                             | BRASS FEMALE PIPE ELBOW;                      |
| 36  | 340-0087-01                          | O2 BODY OUTLET ADAPTER; CHROME                |
| 39  | 8600-014                             | DIFFUSER VENT CAP                             |
| 48  | MRO-B-1/4                            | STREET TEE; MALE ON RUN 1/4IN                 |
| 49  | MRO-B-1/2                            | STREET TEE; MALE ON RUN 1/2IN                 |
| 50  | FLM10T-04N-BRAS                      | BRASS MALE 90 DEGREE ELBOW                    |
| 51  | CMC4-8N-BRAS                         | MALE CONNECTOR 1/4 X 1/2 MNPT                 |
| 52  | CV4-F-8N-1-BRAS                      | VALVE CHECK 1 PSI CRACKING                    |
| 53  | PTR-B-3/8X1/4                        | PIPE THREAD REDUCER; BRASS;                   |
| 54  | CFC4-4N-S316                         | FEMALE CONNECTOR 1/4X1/4 S/S                  |
| 55  | CTX-SS-6                             | SS MALE 90 DEGREE ELBOW                       |
| 56  | MRO-SS-1/4                           | S/S STREET TEE; MALE ON RUN;                  |

| REF | PART NO.                             | DESCRIPTION                   |
|-----|--------------------------------------|-------------------------------|
| 57  | CMC4-4N-S316                         | MALE CONNECTOR S/S 1/4IN      |
| 58  | 96211-BB4                            | PRESSURE SWITCH125RNG/1000PF  |
| 59  | 7580K6                               | SWITCH TOGGLE SPST            |
| 60  | 5168                                 | SEALHALF BOOT TOGGLE GREY     |
| 61  | LT2462-24-D51                        | LED, BI-COLOR RED/GREEN       |
| 62  | LEDHOLDER-BLK.25                     | MOUNTING CLIP FOR 5MM LED     |
| 63  | 273-068                              | SONALERT 12 VDC 2900 HZ       |
| 64  | B23                                  | BATTERY HOLDER 9V             |
| 70  | DD-B-1/4                             | BRASS FEMALE PIPE ELBOW;      |
| 71  | B-8CPA2-150                          | VALVE RELIEF ADJUST 150/350   |
| 72  | CFC6-8N-BRAS                         | FEMALE CONNECTOR 3/8 X 1/2    |
| 73  | CMC6-4N-S316                         | MALE CONNECTOR STAINLESS      |
| 80  | 520-0013-01<br>(MFG PN: 200FTM88A21) | 6 IN. SEAWATER PNEUMO GAUGE   |
| 81  | ALV-BL-10-150                        | AMRON PRESSURE LIMITING VALVE |
| 82  | NV2H-4T-S-BRAS                       | VALVE NEEDLE 1/4IN BRASS      |
| 83  | NV2M-4N-S-BRAS                       | VALVE NEEDLE 1/4 MNPT BRASS   |
| 84  | CLF4-4N-BRAS                         | ELBOW FEMALE 1/4IN BRASS      |
| 85  | KMMOO-B-1/4                          | PIPE CROSS BRASS 1/4IN        |
| 86  | CBTF4-4N-BRAS                        | FEMALE TEE BRASS NO4xNO4x1/4  |

3.0 LIMITED WARRANTY AND SERVICE POLICY

## Amron International, Inc. LIMITED WARRANTY & SERVICE POLICY

### LIMITED WARRANTY

AMRON INTERNATIONAL, INC., (Amron) warrants that its manufactured products are free from defects in material and workmanship under normal use and service for a period of one year from date of shipment as described in Amron's literature covering this product. Oxygen Treatment Hoods and accessories are excluded and limited to 90 days. Amron's obligation under this warranty is limited to the repair of or replacement, at Amron's option, of defective material. This warranty shall not cover defects which are the result of misuse, negligence, accident, repair or alterations.

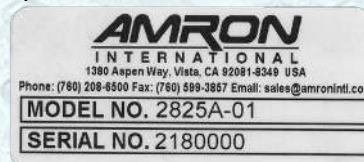
### SERVICE POLICY

For technical assistance or to request a repair, please complete one of the following:

- *Amron Communicator Repair* : <https://www.amronintl.com/communicator-repair-form>
- *Repair Request* (all other products): <https://www.amronintl.com/repair-form>
- Call (760) 208-6500, Monday – Friday, 8 a.m. to 5 p.m. PST.

Both MODEL NO. and SERIAL NO. are required fields to be entered on the *Amron Communicator Repair Request* form and can be found on the products identification label as shown below.

“Sample” Product Identification Label



*Do not* return any product without obtaining a RMR (Return Materials Request).  
Detailed return instructions will be provided at the time of request.

1380 Aspen Way, Vista California 92081-8349 U.S.A  
Phone: (760) 208-6500 Fax (760) 599-3857  
Email: [sales@amronintl.com](mailto:sales@amronintl.com) Web: [www.amronintl.com](http://www.amronintl.com)