

Kingston Check Valves

Kingston Model 205

Brass Horizontal Check Valve



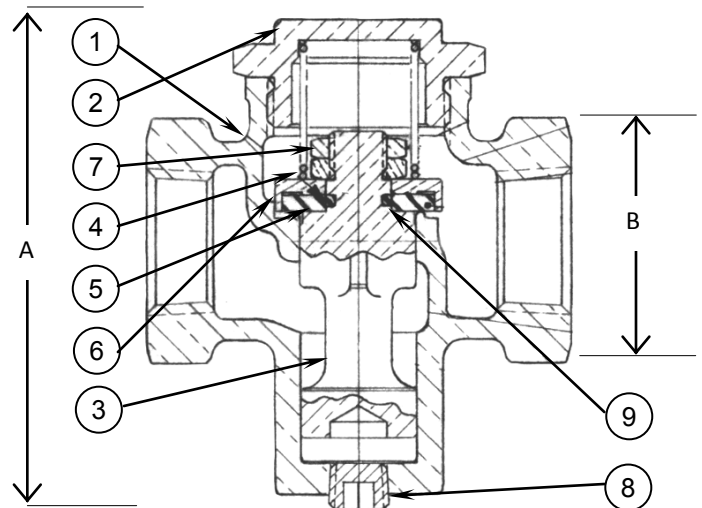
Features:

- Precision machined C360 brass
- Stainless steel spring
- Lubricated Compressed Air Applications
- Maximum temperature 350°F
- Sizes: 1/4" NPT — 2" NPT
- 1/8" unloader port plugged
- Dash-pot design to reduce hammering effect caused by exhaust pulsation found in piston-type air compressors

Model	Inlet Size	Outlet Size	Cracking Pressure	Dimension		Approx. Ship Wt.
				Height (A)	Hex (B)	
205-2	1/4"	1/4"	3.0	2-13/32"	1"	10 oz.
205-3	3/8"	3/8"	3.0	2-1/8"	1"	12 oz.
205-4	1/2"	1/2"	3.0	3-1/8"	1-13/16"	1 lb. 3 oz.
205-5	3/4"	3/4"	1.0	3-7/8"	1-9/16"	2 lb.
205-6	1"	1"	1.0	4-3/16"	1-7/8"	3 lb. 6 oz.
205-7	1-1/4"	1-1/4"	1.5	4-15/16"	2-5/16"	5 lb.
205-8	1-1/2"	1-1/2"	1.0	4-15/16"	2-5/16"	4 lb. 9 oz.
205A-9	2"	2"	1.0	5"	3-3/32"	7 lb. 4 oz.

Materials

No.	Part Name	Materials
1	Body	Brass (ASTM-B16)
2	Cap	Brass (ASTM-B16)
3	Plunger	Brass (ASTM-B16)
4	Spring	Stainless Steel
5	Disc	Teflon
6	Cage (Disc)	Brass (ASTM-B16)
7	Locknut	Brass (ASTM-B16)
8	Pipe Plug	Steel
9	"O"-Ring	Viton



www.KingstonValves.com

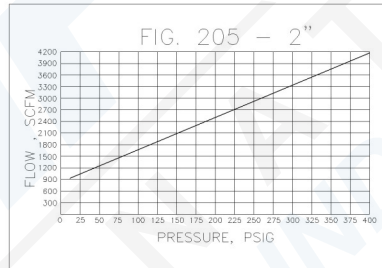
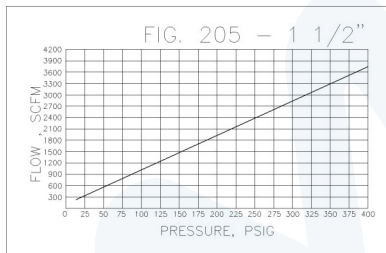
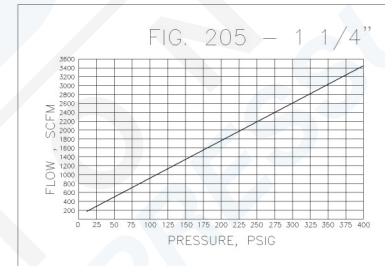
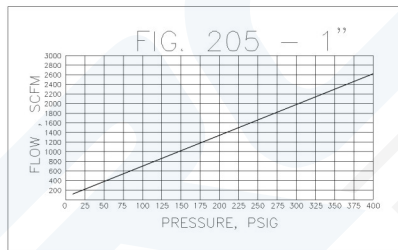
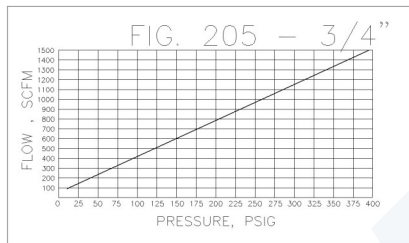
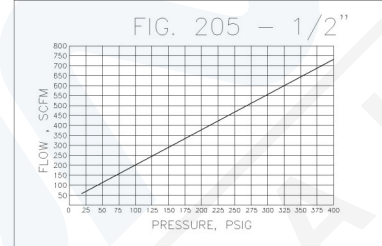
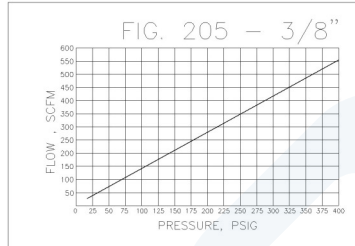
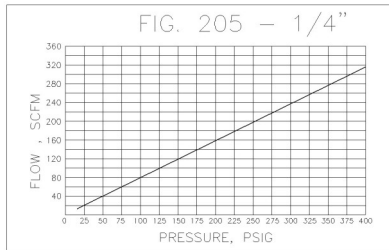
Storm Manufacturing Group
 23201 Normandie Ave., Torrance CA 90501-5050
 Toll Free: 866-628-8287 Fax: 800-997-0500 Direct: 310-326-8287

Copyright 2012 © Storm Manufacturing Group. All rights reserved. Product designs and specifications subject to change without notice. r.12a

Kingston Model 205 Horizontal Check Valve

Flow Capacity Information

Model 205 Flow Capacity



Product Notes

Model 205 Check Valve is precision machined with a spring-loaded 'dash-pot' piston. The dash-pot piston design reduces the hammering effect caused by exhaust pulsation found in piston-type air compressors. Built with a Teflon disc for high temperature applications.

All Kingston Check Valves are manufactured under a quality control system approved by the National Board of Boiler and Pressure Vessel Inspectors.

Final application design and integration of Kingston Products are the sole responsibility of the end user.

Storm Manufacturing reserves all rights. Product specifications and designs are subject to change without notice.

Ordering Information

Kingston Horizontal Check Valves Part Number Codes



Valve Model
- 205

Size

- 2 = 1/4" NPT
- 3 = 3/8" NPT
- 4 = 1/2" NPT
- 5 = 3/4" NPT
- 6 = 1" NPT
- 7 = 1-1/4" NPT
- 8 = 1-1/2" NPT

Ex. 205-4 - Kingston Model 205 w/ 1/2" Inlet/Outlet



Storm Manufacturing Group
23201 Normandie Ave., Torrance CA 90501-5050
Toll Free: 866-628-8287 Fax: 800-997-0500 Direct: 310-326-8287

Copyright 2012 © Storm Manufacturing Group. All rights reserved. Product designs and specifications subject to change without notice. r.12a