

Hammer Drill

HD45



SPECIFICATIONS

ITEM	U.S.A.	METRIC
CHUCK CAPACITY	Up to 2 in dia. or 4 in core, 736 Skil hex	
OUTPUT	0 - 300 rpm	
INPUT FLOW RANGE	7 - 9 gpm	26 - 34 lpm
INPUT PRESSURE	1500 - 2000 psi	105 - 140 bar
OPTIMUM FLOW	8 gpm	30 lpm
WEIGHT	45 lbs	20.4 kg
LENGTH	22.5 in	57 cm
WIDTH (at handles)	14 in	35 cm
MOTOR	Internal	
PORTING	8 SAE O-Ring	
CONNECTOR	3/8 in Male Pipe Hose End	

Features and Benefits

Stanley Hydraulic Tool's **HD45** Hammer Drill is a heavy duty model designed for use in medium to heavy applications. It's the ideal tool for drilling gas and water utility holes and setting anchor bolts.

Drills Holes from 3/4 in (19 mm) to 2 in (50 mm) in diameter and up to 29 in (73.7 cm) deep as well as core drilling up to 4 in (102 mm) in diameter.

Uses Standard Skil 736 type carbide tipped, fluted drill bits and requires no fluid to clear holes during operation.

Feathering On / Off Valve / Adjustable Bit Rotation Speed (*forward and reverse*) make the **HD45** easy to start and easy to control.

Underwater Models Available.

ACCESSORIES

PART NO.	DESCRIPTION
----------	-------------

Carbide Bits

02280	3/4 in x 24 in (61 cm) Length, 14 7/8 in (37.8 cm) Deep Hole
05163	7/8 in x 24 in (61 cm) Length, 14 7/8 in (37.8 cm) Deep Hole
04668	1 in x 18 in (45.7 cm) Length, 8 7/8 in (22.5 cm) Deep Hole
02281	1 in x 24 in (61 cm) Length, 14 7/8 in (37.8 cm) Deep Hole
02282	1-1/4 in x 24 in (61 cm) Length, 14 7/8 in (37.8 cm) Deep Hole
04896	1-1/4 in x 36 in (91.4 cm) Length, 29 in (73.7 cm) Deep Hole
05167	1-1/2 in x 24 in (61 cm) Length, 15 in (38.1 cm) Deep Hole
02283	2 in x 24 in (61 cm) Length, 14 3/4 in (37.5 cm) Deep Hole
30279	Adapter to Accept Percussion Core Bits

Carbide Percussion Core Bits (Part Number 30279 Required)

27896	1 in dia. x 6 in (15.2 cm) LOA
27897	1-1/8 in dia. x 6 in (15.2 cm) LOA
27898	1-1/4 in dia. x 6 in (15.2 cm) LOA
27899	1-1/2 in dia. x 6 in (15.2 cm) LOA
27900	1-3/4 in dia. x 6 in (15.2 cm) LOA
27901	2 in dia. x 6 in (15.2 cm) LOA
27902	2-1/2 in dia. x 6 in (15.2 cm) LOA
27903	2-3/4 in dia. x 6 in (15.2 cm) LOA
27904	3 in dia. x 6 in (15.2 cm) LOA
30834	4 in dia. x 6 in (15.2 cm) LOA
27905	Percussion Core Bit Spline Adapter for HD45
30278	Core Bit Pilot (recommended for 2-1/2 in and larger core bits)

ORDERING INFORMATION

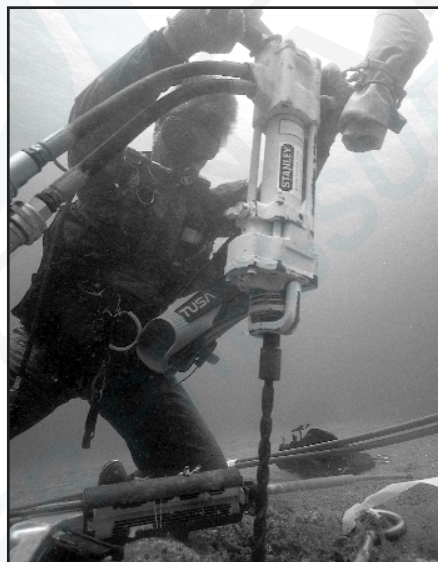
PART NO.	DESCRIPTION
----------	-------------

HD45110B	HD45 Hammer Drill with Hose Whips
HD45310	HD45 Underwater Hammer Drill with Hose Whips

Note: Both models listed above operate in open-center systems.

WARRANTY

Stanley Hydraulic Tools and their associated parts are warranted against defects in materials and workmanship for a period of twelve months from the date of purchase. Stanley Hydraulic Tools reserves the right to repair or replace only those parts which prove to have been defective at the time of purchase. This warranty becomes void if maximum flow and pressure ratings are exceeded.



HD45 Underwater Model.

All Stanley Hydraulic Tools, Parts, Accessories and allied equipment are subject to design improvements, specification and price changes at any time without notice and with no obligation to units already sold. Weights, dimensions and operating specifications listed herein are subject to change without notice. Where specifications are critical to your application, please consult Stanley Hydraulic Tools.

Call the Stanley Hydraulic Tools dealer nearest you...

**Stanley
Hydraulic Tools**

3810 SE Naef Road
Milwaukie, OR 97267-5698

Tel 503-659-5660
Fax 503-652-1780

STANLEY