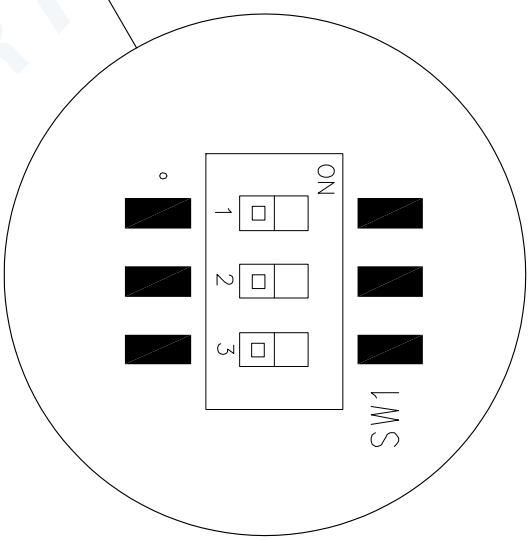


REVISIONS			
REV.	DESCRIPTION	DATE	APPROVED
1	INITIAL RELEASE	10/11	WRG
5	SYNC'D REVISIONS	01/12	WRG

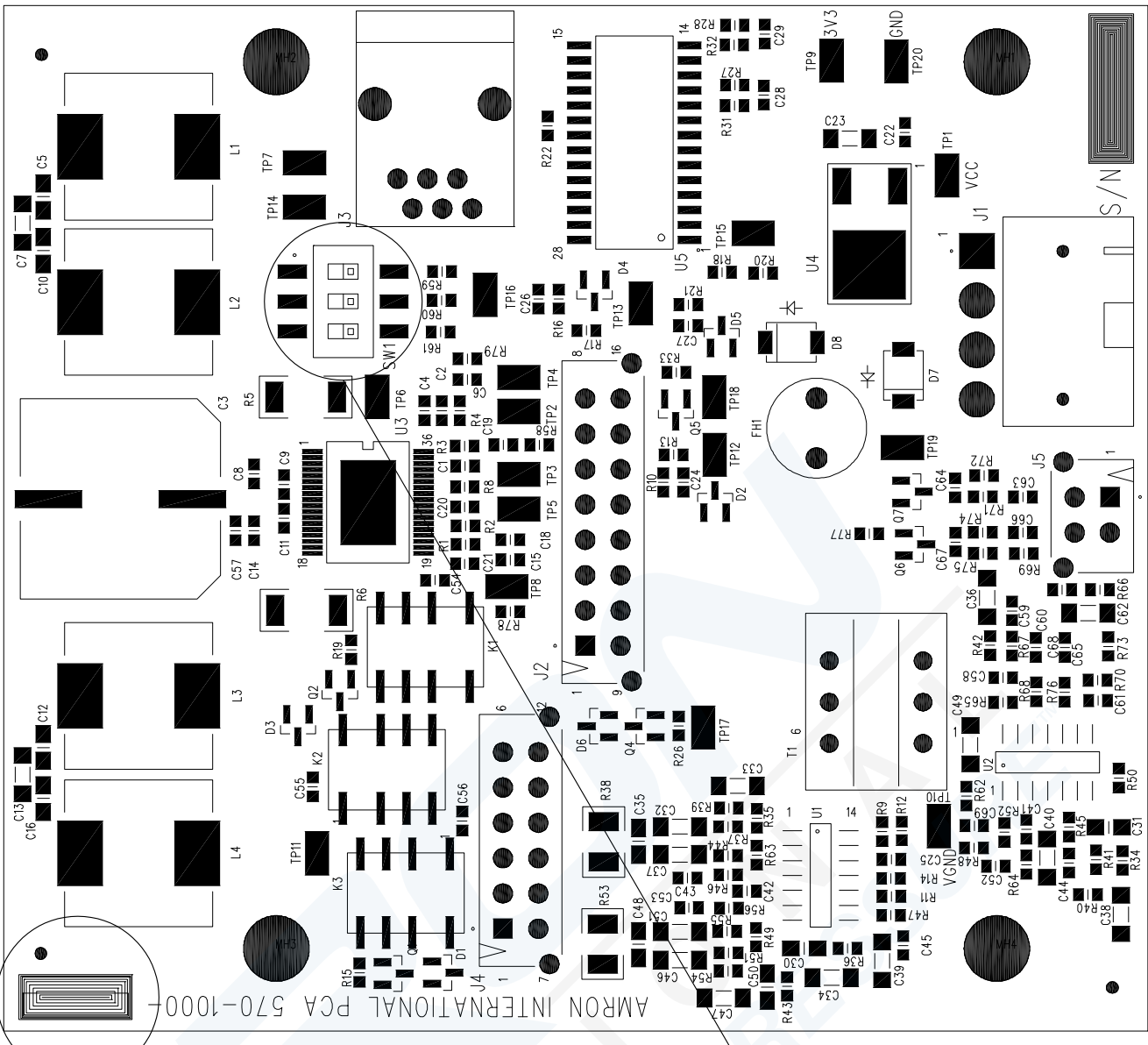
DETAIL A



WORK INSTRUCTIONS

- 1) USE PROPER ESD PRECAUTIONS WHEN HANDLING THIS PRINTED CIRCUIT ASSEMBLY (PCA)
- 2) SET SW1 (SEE DETAIL A) PER THE FOLLOWING
  - SW1-1 OFF
  - SW1-2 OFF
  - SW1-3 OFF
- 3) USING INDELIBLE INK, ADD THE NOTATION '02' TO THE PCA PART NUMBER BLOCK (SEE DETAIL B)

DETAIL B



QTY	FSCM	PART OR IDENTIFYING NO.	NOMENCLATURE OR DESCRIPTION	MATERIAL SPECIFICATION
		2810E-8111		
570-1000-02.DWG		2810E	PARTS LIST	
FILE NAME	USED ON			
APPLICATION				
UNLESS OTHERWISE SPECIFIED DIMENSIONS ARE IN INCHES TOLERANCES ARE: FRACTIONS    DECIMALS    ANGLES .XXX ± .010                    ± 1°				
MATERIAL		CONTRACT NO.		
FINISH		APPROVALS		
DO NOT SCALE DRAWING		DRAWN	WRG	10-11
		CHECKED	RMB	10-11
		ISSUED	WRG	10-11
		SCALE	N/A	SHEET 1 OF 1
		SIZE	B	
		CAGE NO.	6S753	
		DWG. NO.	570-1000-02	REV. 5
		<b>AMRON INTERNATIONAL</b> 1380 ASPEN WAY, VISTA, CALIFORNIA 92081 U.S.A. PCA CONFIGURATION INSTRUCTIONS ONE DIVER - RECHARGEABLE		
This drawing is the property of Amron International, and embodies a confidential proprietary design in which Amron International retains all patent and other rights, including exclusive right of use, manufacture and sale. It is submitted under a confidential relationship for a specific purpose, and the recipient agrees, by accepting this drawing, not to supply or disclose any information regarding it to any unauthorized person.				