

# BURNING UMBILICAL / WELDING CABLE

Amron Burning Umbilical Worksheet

SEE BELOW

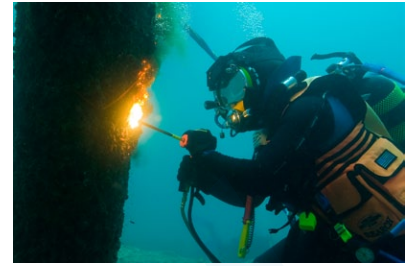


Photo Provided by Senyar Dive Team

Length

Overall length of umbilical

Power Lead

- 1  **Power Lead (choose 1)**
- 1 1/0 Cable with lugs each end
  - 2 2/0 Cable with lugs each end
  - 3 3/0 Cable with lugs each end
  - X Other: \_\_\_\_\_

Torch / Stinger Head

- 2  **Torch / Stinger Head (choose 1)**
- 1 Broco Part Number BR-22
  - 2 Broco Part Number BR-21
  - 3 Broco Part Number BR-20
  - 4 Arcair Sea Torch with 3/8 Collet Part Number 14-050-126
  - 5 Arcair Sea Stinger Part Number 14-050-128
  - 6 Arcair Arcwater Torch Part Number 14-050-127

Oxygen Supply Hose

- 3  **Oxygen Supply Hose (choose 1)**
- 1 3/8 in. 33HB Divers Hose
  - 2 1/2 in. 33HB Divers Hose

Hose Fitting

- 4  **Hose Fitting (choose 2 - same or different)**
- 1 Brass O2 swivel bard with 3 stainless steel clamps Part Number AHB-60202
  - X Other: \_\_\_\_\_

Tape

- 5  **Tape (choose 1)**
- 1 2 in. wide white Polyken tape
  - 2 2 in. wide silver Duct tape
  - X Other: \_\_\_\_\_

Ground Cable Lead

- 6  **Ground Cable Lead (choose 1)**
- 1 1/0 Cable with lugs each end
  - 2 2/0 Cable with lugs each end
  - 3 3/0 Cable with lugs each end
  - X Other: \_\_\_\_\_

Ground Cable Clamp

- 7  **Ground Cable Clamp (choose 1)**
- 1 Brass C-clamp 600 amp Part Number GC-600-50
  - 2 "Push-on" 300 amp Part Number GC-300
  - 3 "Push-on" 500 amp Part Number GC-500

25 ft. Jumper Lead

- 8  **25 ft. Jumper Lead (choose 1)**
- 1 1/0 Cable with lugs each end
  - 2 2/0 Cable with lugs each end
  - 3 3/0 Cable with lugs each end

## Welding Cable

SEE BELOW

For use as flexible leads in welding and burning umbilicals.

- Rope stranded copper conductor; a separator applied over the conductor provide flexibility and ease of stripping
- Tough oil resistant black thermoset jacket
- C. voltage rating: 600 Volts

## Ordering Information

Part Number	No. of Conductors	AWG Size	Jacket O.D.	Cable O.D.	lbs/ 1000 ft.	Amps per Conductor
5J-1011	1	1/0	.09	.615	425	300
5J-2021	1	2/0	.09	.650	510	375
5J-3031	1	3/0	.110	.720	615	450



Brass "C" Ground Clamp

GC-500-50

Specifications	
Amp Rating	600
Connect Capacity	1/2 in. Cap Screw
Throat Opening	2-1/2 in.



Copper Push-On Ground Clamp

SEE BELOW

Ordering Information			
Part Number	Amp Rating	Connect Capacity	Throat Opening
GC-300	300	Up to 3/0	1-1/2 in. - Depth 4 in.
GC-500	500	Up to 4/0	2 in. - Depth 5-1/4 in.



Cable Lugs

SEE BELOW

Ordering Information			
Part Number	Welding Cable Size	Amp Rating	Stud Hole
T-120	1 - 2/0	225	17/32 in.
T-3040	3/0 and 4/0	250	17/32 in.

CUTTING / WELDING EQUIPMENT